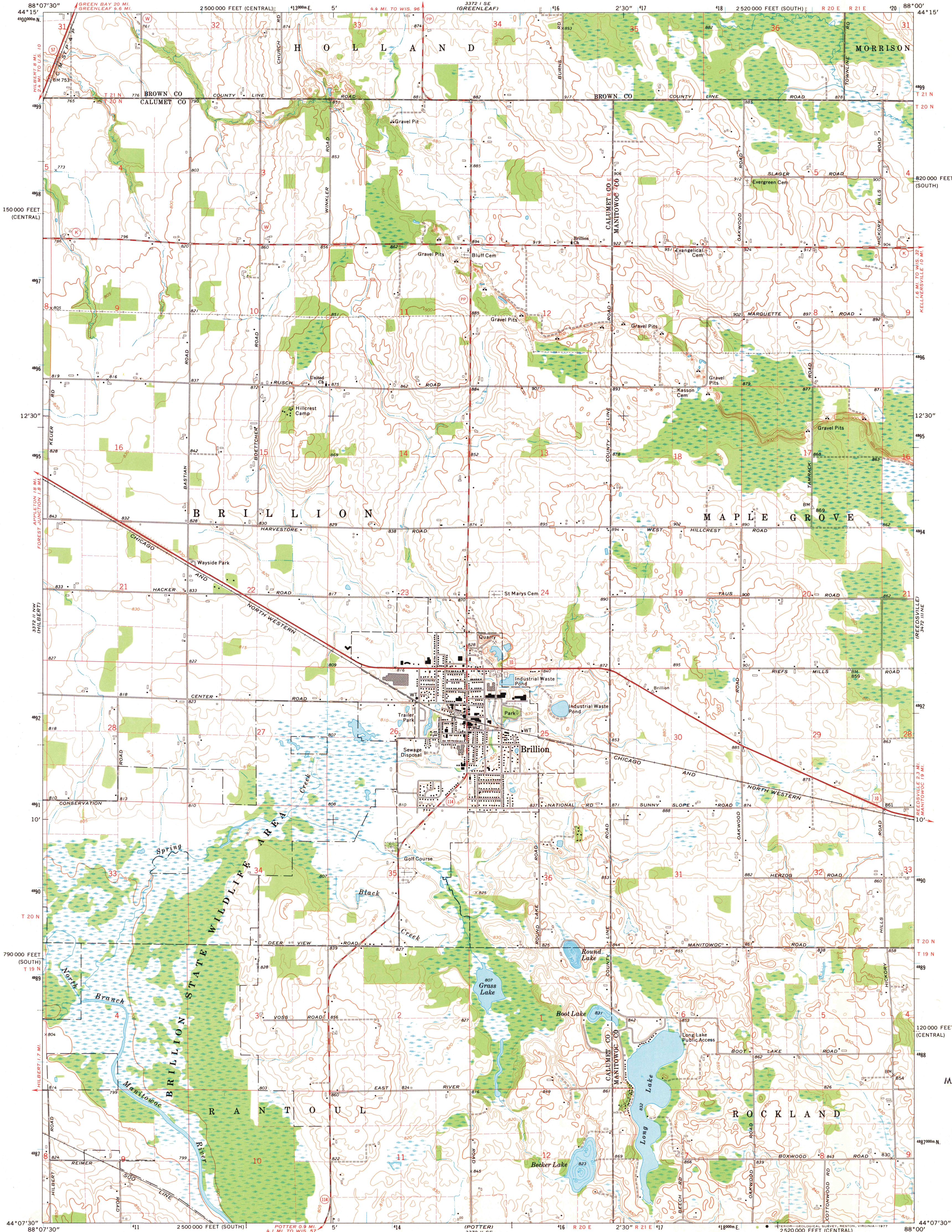


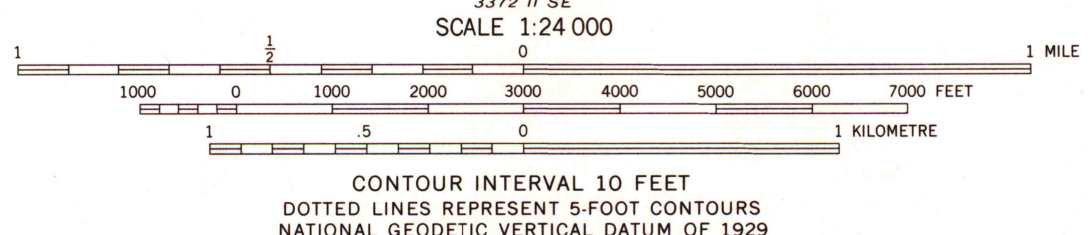
UNITED STATES
DEPARTMENT OF THE INTERIOR
GEOLOGICAL SURVEY

STATE OF WISCONSIN
DIVISION OF HIGHWAYS
GEOLOGICAL AND NATURAL HISTORY SURVEY

BRILLION QUADRANGLE
WISCONSIN
7.5 MINUTE SERIES (TOPOGRAPHIC)
NE 4 CHILTON 15' QUADRANGLE



Mapped, edited, and published by the Geological Survey
in cooperation with the Wisconsin Division of Highways
and Wisconsin Geological and Natural History Survey
Control by USGS and NOS/NOAA
Topography by photogrammetric methods from aerial
photographs taken 1973. Field checked 1974
Hydrography compiled from information furnished by
Wisconsin Department of Natural Resources
Projection: Wisconsin coordinate system, south zone
(Lambert conformal conic)
10,000-foot grid ticks based on Wisconsin coordinate
system, south and central zones
1000-metre Universal Transverse Mercator grid ticks,
zone 16, shown in blue. 1927 North American datum
Fine red dashed lines indicate selected fence and field lines where
generally visible on aerial photographs. This information is unchecked



ROAD CLASSIFICATION
Primary highway, hard surface
Secondary highway, hard surface
Light-duty road, hard or improved surface
Unimproved road
Interstate Route
U.S. Route
State Route



BRILLION, WIS.
NE 4 CHILTON 15' QUADRANGLE
N4407.5-W8800.7.5

1974
AMS 3372 II NE-SERIES V861

MAP AND AIR PHOTO
LIBRARY
JAN 10 1970
University of Wisconsin
Madison

1974
Copy
1-1