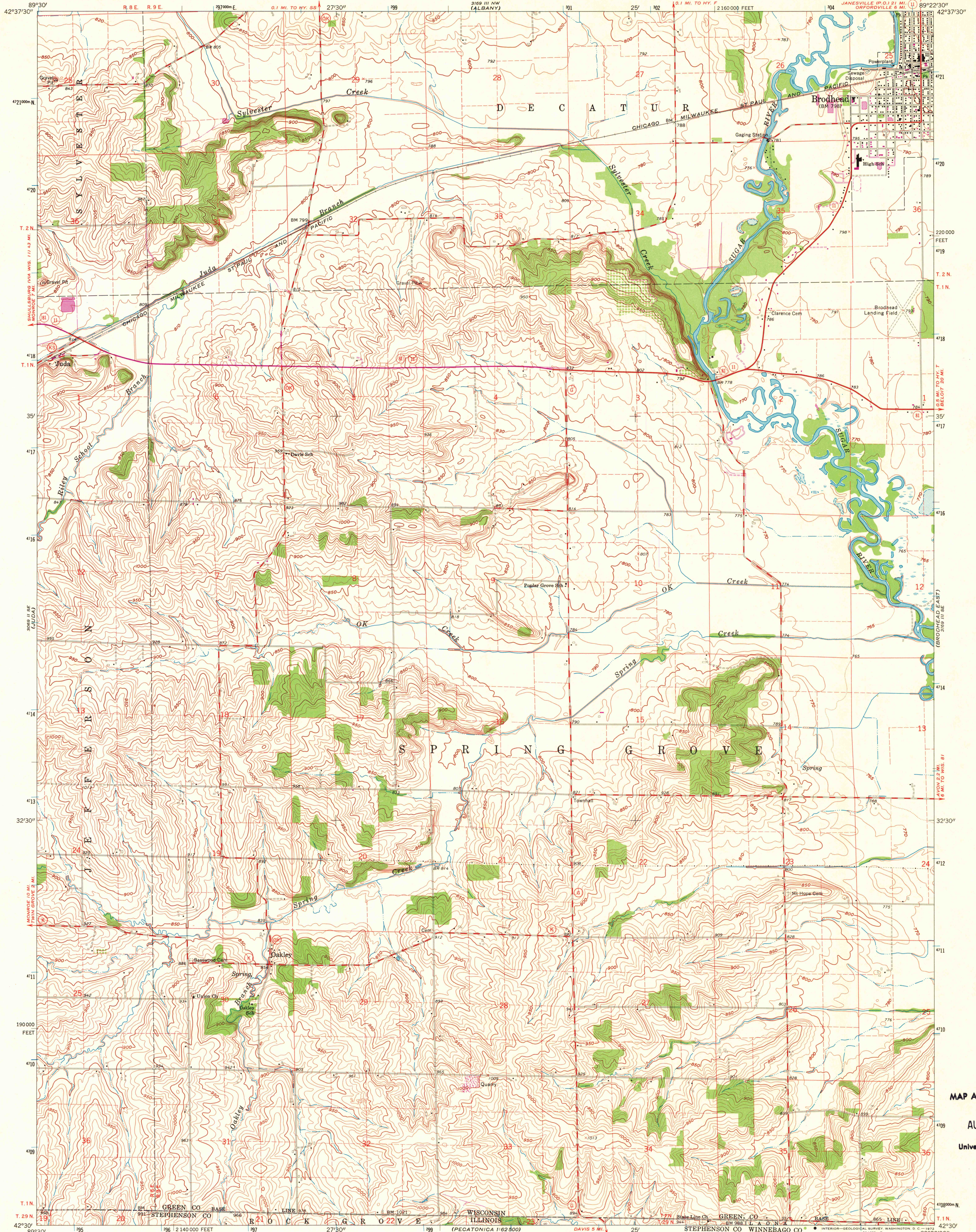


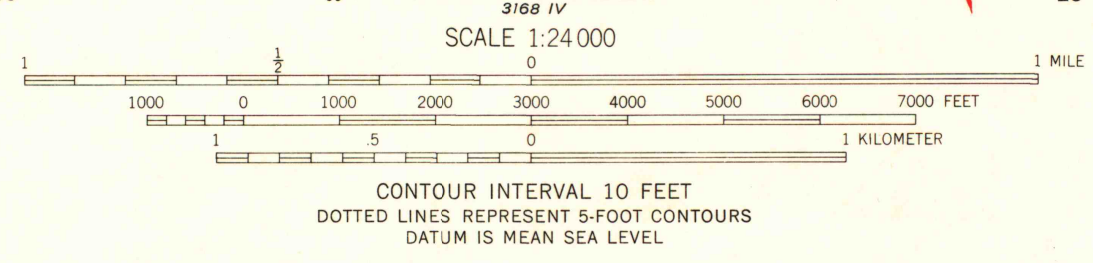
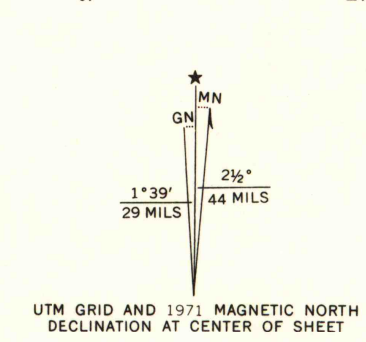
UNITED STATES  
DEPARTMENT OF THE INTERIOR  
GEOLOGICAL SURVEY

BRODHEAD WEST QUADRANGLE  
WISCONSIN-ILLINOIS  
7.5 MINUTE SERIES (TOPOGRAPHIC)

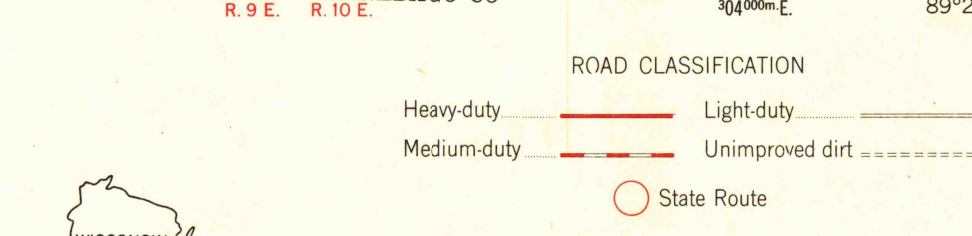


MAP AND AIR PHOTO  
LIBRARY  
AUG 24 1976  
University of Wisconsin  
Madison

Mapped, edited, and published by the Geological Survey in cooperation with State of Wisconsin agencies  
Control by USGS and USC&GS  
Topography by photogrammetric methods from aerial photographs taken 1960. Field checked 1962  
Polyconic projection, 1927 North American datum  
10,000-foot grid based on Wisconsin coordinate system, south zone  
1000-meter Universal Transverse Mercator grid ticks, zone 16, shown in blue  
Fine red dashed lines indicate selected fence and field lines where generally visible on aerial photographs. This information is unchecked  
Revisions shown in purple compiled from aerial photographs taken 1971. This information not field checked



THIS MAP COMPLIES WITH NATIONAL MAP ACCURACY STANDARDS  
FOR SALE BY U. S. GEOLOGICAL SURVEY, WASHINGTON, D. C. 20242,  
WISCONSIN GEOLOGICAL AND NATURAL HISTORY SURVEY, MADISON, WISCONSIN 53706,  
AND STATE GEOLOGICAL SURVEY, URBANA, ILLINOIS 61801  
A FOLDER DESCRIBING TOPOGRAPHIC MAPS AND SYMBOLS IS AVAILABLE ON REQUEST



BRODHEAD WEST, WIS.-ILL.  
SW/4 BRODHEAD 15' QUADRANGLE  
N4230-W8922.5/7.5  
1962  
PHOTOREVISED 1971  
AMS 3169 III SW-SERIES V861

1971  
copy  
1-2