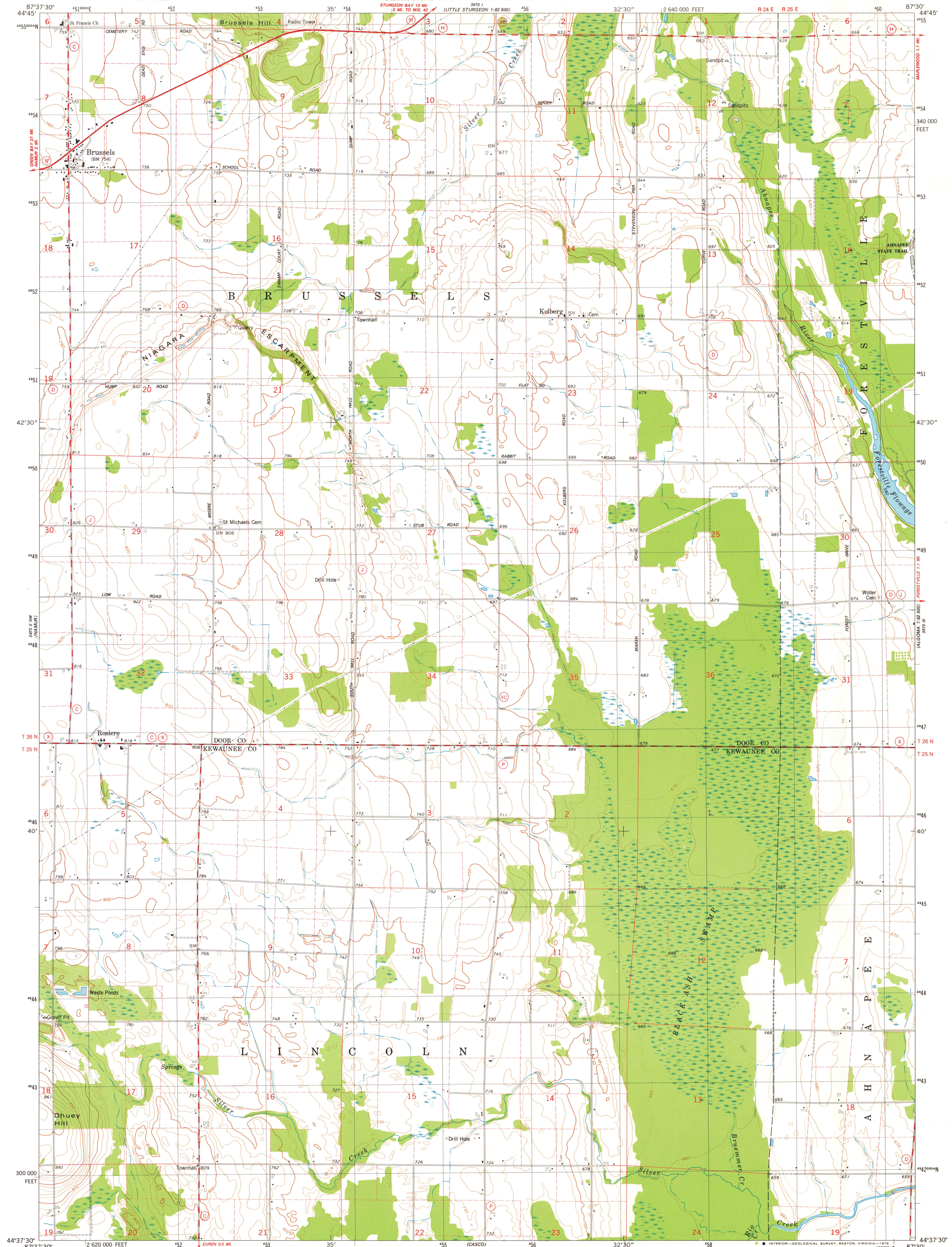
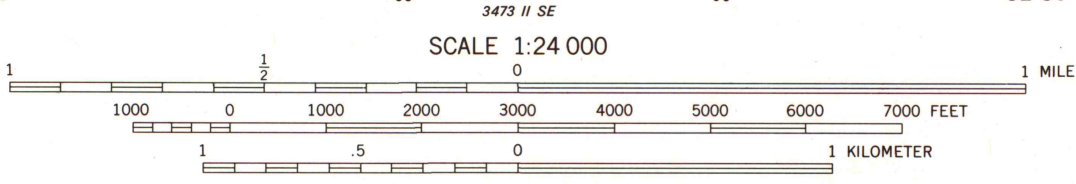




3473 II  
STURGEON BAY V  
1:62,500



Mapped, edited, and published by the Geological Survey in cooperation with the Wisconsin Division of Highways and Wisconsin Geological and Natural History Survey  
Control by USGS and NOS/NOAA  
Topography by photogrammetric methods from aerial photographs taken 1976. Field checked 1976. Map edited 1978  
Projection and 10,000-foot grid ticks: Wisconsin coordinate system, central zone (Lambert conformal conic)  
1000-meter Universal Transverse Mercator grid, zone 16  
1927 North American datum  
Fine red dashed lines indicate selected fence and field lines where generally visible on aerial photographs. This information is unchecked



CONTOUR INTERVAL 10 FEET  
DOTTED LINES REPRESENT 5-FOOT CONTOURS  
NATIONAL GEODETIC VERTICAL DATUM OF 1929

THIS MAP COMPLIES WITH NATIONAL MAP ACCURACY STANDARDS FOR SALE BY U. S. GEOLOGICAL SURVEY, RESTON, VIRGINIA 22092 AND WISCONSIN GEOLOGICAL AND NATURAL HISTORY SURVEY, MADISON, WISCONSIN 53706 A FOLDER DESCRIBING TOPOGRAPHIC MAPS AND SYMBOLS IS AVAILABLE ON REQUEST

ROAD CLASSIFICATION  
Primary highway, hard surface  
Secondary highway, hard surface  
Light-duty road, hard or improved surface  
Unimproved road  
Interstate Route U. S. Route State Route



BRUSSELS, WIS.  
NE/4 CASCO 15' QUADRANGLE  
N4437.5-W8730.7.5

1978  
AMS 3473 II NE-SERIES V861

MAP AND AIR PHOTO  
LIBRARY  
SEP 6 1979  
University of Wisconsin  
Madison

1978  
copy  
1-1