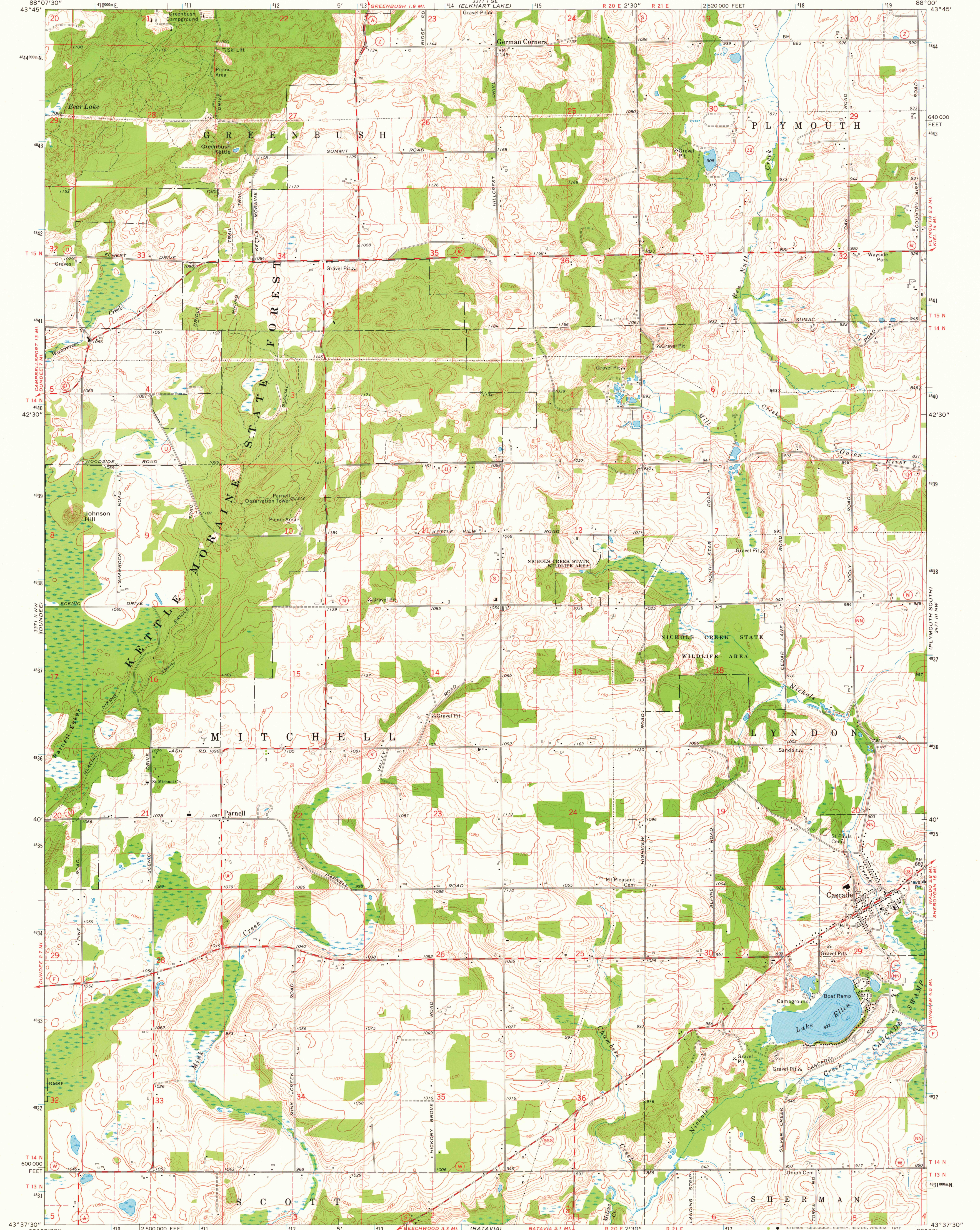


3371 11 SW
3371 10 SW
3371 9 SW
3371 8 SW
3371 7 SW
3371 6 SW
3371 5 SW
3371 4 SW
3371 3 SW
3371 2 SW
3371 1 SW

3371 11 SW
3371 10 SW
3371 9 SW
3371 8 SW
3371 7 SW
3371 6 SW
3371 5 SW
3371 4 SW
3371 3 SW
3371 2 SW
3371 1 SW



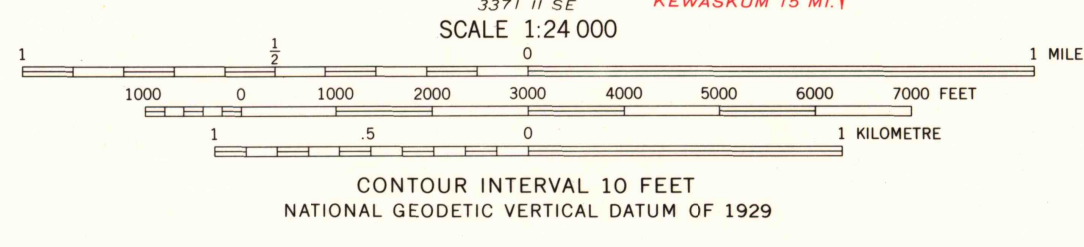
Mapped, edited, and published by the Geological Survey in cooperation with the Wisconsin Division of Highways and Wisconsin Geological and Natural History Survey. Control by USGS and NOS/NOAA.

Topography by photogrammetric methods from aerial photographs taken 1973. Field checked 1974.

Hydrography compiled from information furnished by Wisconsin Department of Natural Resources.

Projection and 10,000-foot grid ticks: Wisconsin coordinate system, south zone (Lambert conformal conic). 1000-metre Universal Transverse Mercator grid ticks, zone 16, shown in blue. 1927 North American datum.

Fine red dashed lines indicate selected fence and field lines where generally visible on aerial photographs. This information is unchecked.



ROAD CLASSIFICATION

Primary highway, hard surface	Light-duty road, hard or improved surface
Secondary highway, hard surface	Unimproved road
Interstate Route	U. S. Route
	State Route



THIS MAP COMPLIES WITH NATIONAL MAP ACCURACY STANDARDS FOR SALE BY U. S. GEOLOGICAL SURVEY, RESTON, VIRGINIA 22092 AND WISCONSIN GEOLOGICAL AND NATURAL HISTORY SURVEY, MADISON, WISCONSIN 53706. A FOLDER DESCRIBING TOPOGRAPHIC MAPS AND SYMBOLS IS AVAILABLE ON REQUEST.

CASCADE, WIS.
USGS
Historical File
Topographic Division
1974
AMS 3371 II NE-SERIES Y861

2800
AUG 05 1977