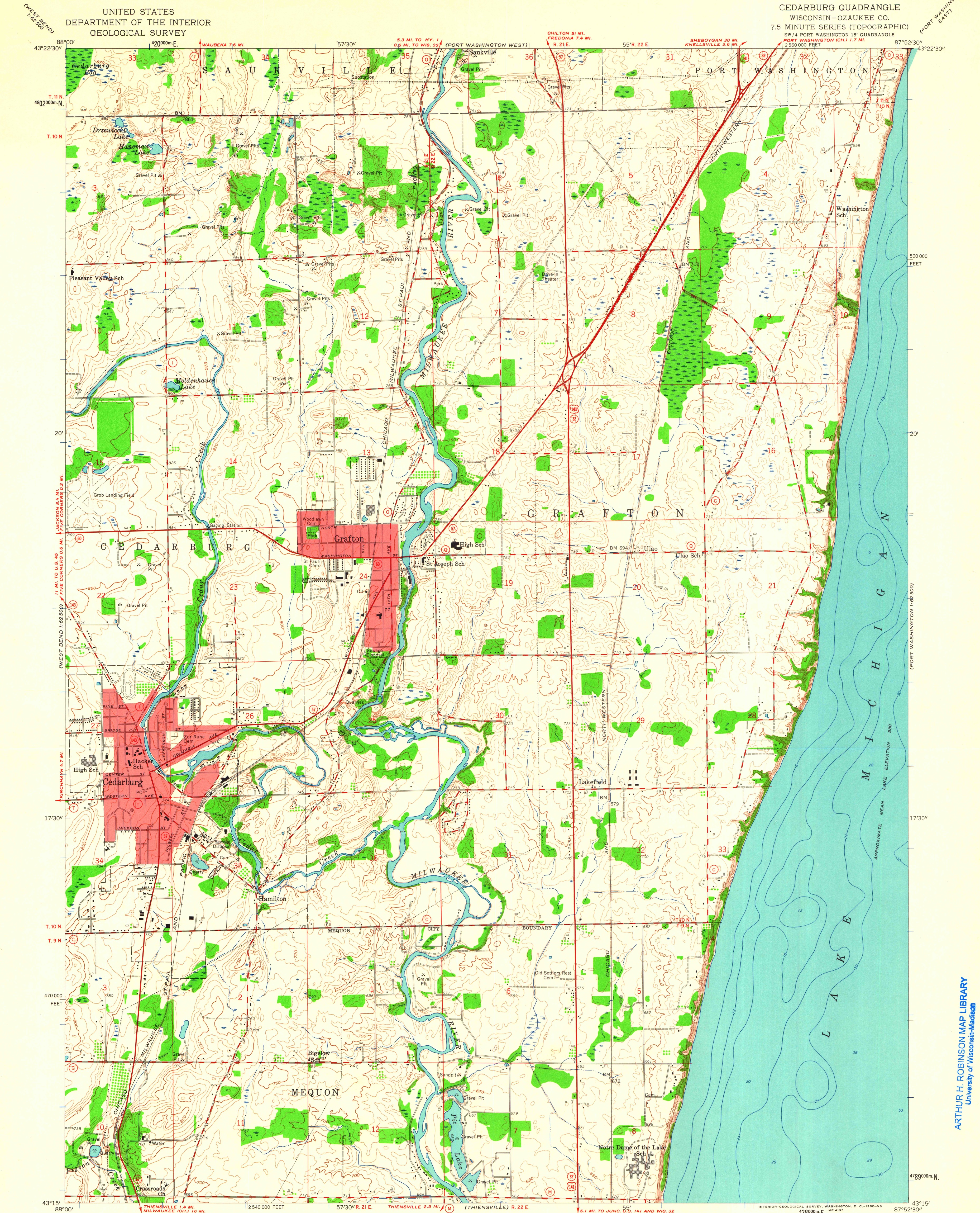


UNITED STATES
DEPARTMENT OF THE INTERIOR
GEOLOGICAL SURVEY

CEDARBURG QUADRANGLE
WISCONSIN—OZAUKEE CO.
7.5 MINUTE SERIES (TOPOGRAPHIC)
SW 1/4 PORT WASHINGTON 15' QUADRANGLE
2 560 000 FEET



Mapped, edited, and published by the Geological Survey

Control by USGS and USC&GS

Topography from aerial photographs by photogrammetric methods

Aerial photographs taken 1955. Field check 1959

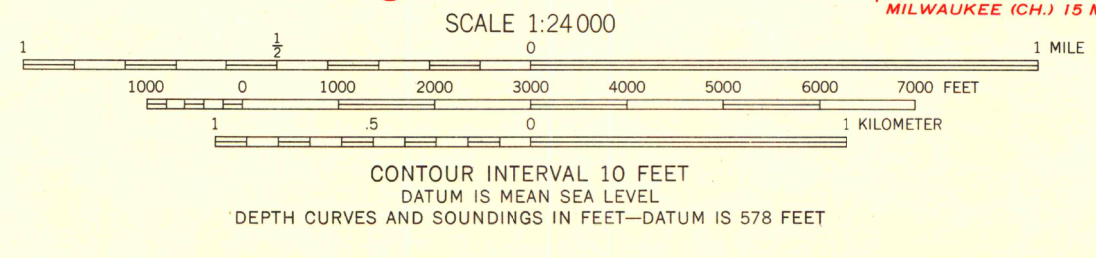
Hydrography compiled from U. S. Lake Survey chart 74 (1957)

Polycyclic projection. 1927 North American datum

10,000-foot grid based on Wisconsin coordinate system, south zone

1000-meter Universal Transverse Mercator grid ticks, zone 16, shown in blue

Red tint indicates areas in which only landmark buildings are shown only



ROAD CLASSIFICATION
Heavy-duty ——— Light-duty ———
Medium-duty ——— Unimproved dirt ———
U. S. Route ——— State Route ———



CEDARBURG, WIS.
SW 1/4 PORT WASHINGTON 15' QUADRANGLE
N 4315—W 8752.5/7.5

1959

ARTHUR H. ROBINSON MAP LIBRARY
University of Wisconsin-Madison

1959
COPY
1-1

FOR LIBRARY
USE ONLY