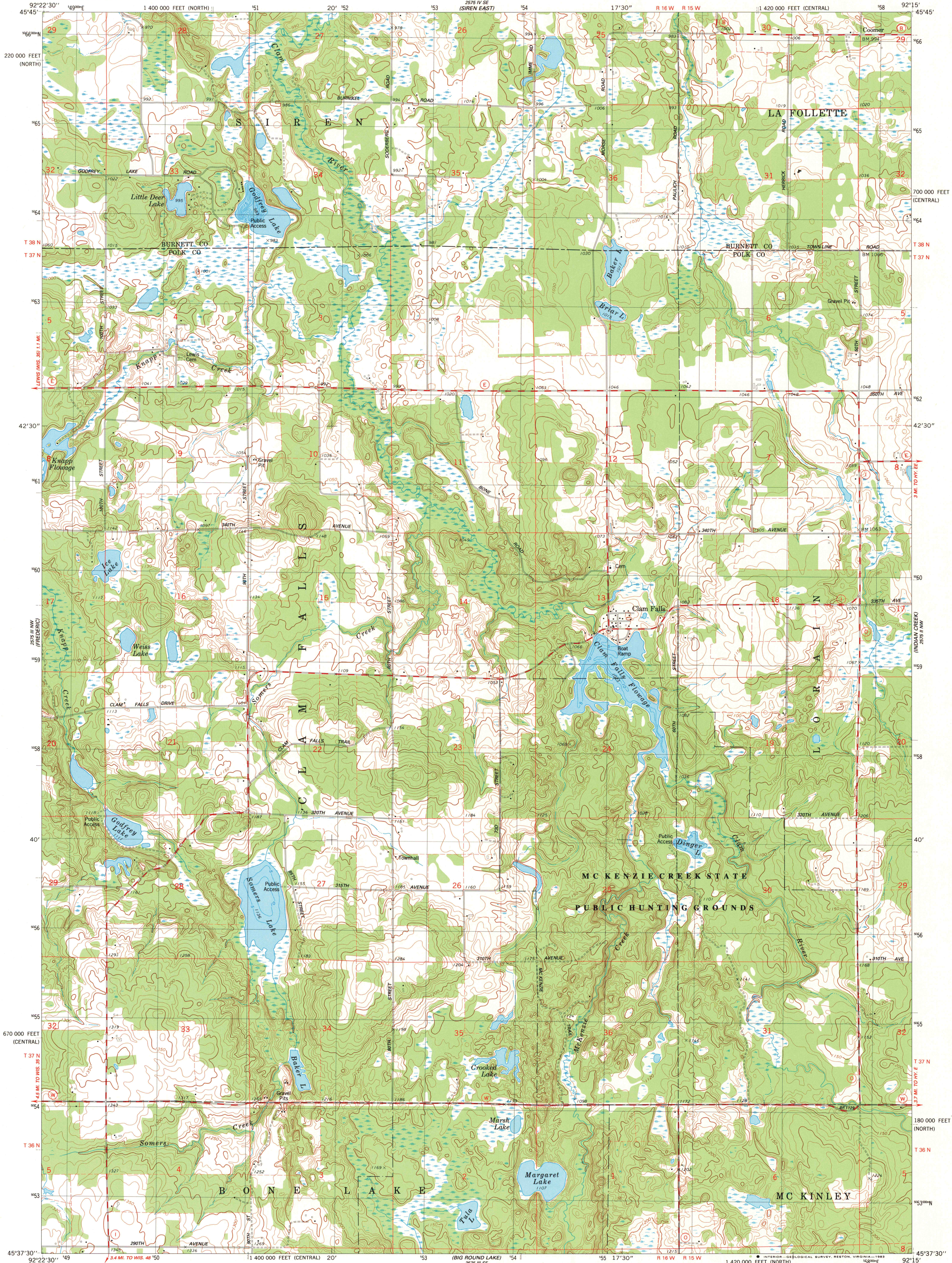
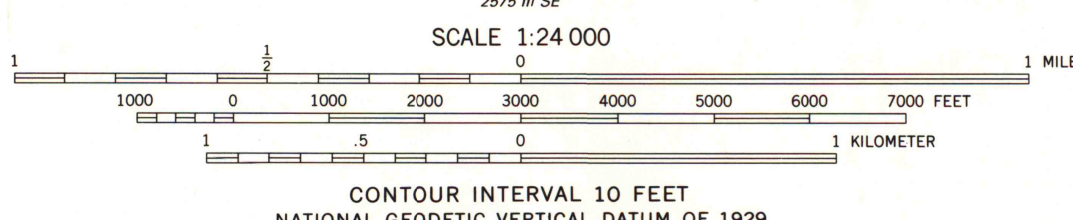


UNITED STATES
DEPARTMENT OF THE INTERIOR
GEOLOGICAL SURVEY

CLAM FALLS QUADRANGLE
WISCONSIN
7.5 MINUTE SERIES (TOPOGRAPHIC)
NE 4 FREDERIC 15' QUADRANGLE



Mapped, edited, and published by the Geological Survey
Control by USGS and NOS/NOAA
Topography by photogrammetric methods from aerial photographs
taken 1979. Field checked 1979. Map edited 1983
Hydrography compiled from information furnished by
Wisconsin Department of Natural Resources
Projection: Wisconsin coordinate system, central zone
(Lambert conformal conic)
10,000-foot grid ticks based on Wisconsin coordinate
system, central and north zones
1000-meter Universal Transverse Mercator grid, zone 15
1927 North American Datum
To place on the predicted North American Datum 1983
move the projection lines 8 meters north and
15 meters east as shown by dashed corner ticks
There may be private inholdings within the boundaries of
the National or State reservations shown on this map
Fine red dashed lines indicate selected fence and field lines
where generally visible on aerial photographs
This information is unchecked



ROAD CLASSIFICATION
Primary highway, hard surface
Secondary highway, hard surface
Light duty road, hard or improved surface
Unimproved road
Interstate Route
U. S. Route
State Route



THIS MAP COMPLIES WITH NATIONAL MAP ACCURACY STANDARDS
FOR SALE BY U. S. GEOLOGICAL SURVEY, RESTON, VIRGINIA 22092
AND WISCONSIN GEOLOGICAL AND NATURAL HISTORY SURVEY, MADISON, WISCONSIN 53706
A FOLDER DESCRIBING TOPOGRAPHIC MAPS AND SYMBOLS IS AVAILABLE ON REQUEST

CLAM FALLS, WIS.
NE 4 FREDERIC 15' QUADRANGLE
N4537.5-W9215/7.5

JUN - 4 1984
ARTHUR H. ROBINSON MAP LIBRARY
University of Wisconsin-Madison
1983
DMA 2575 III NE-SERIES 8861

1983
Copy
1-10