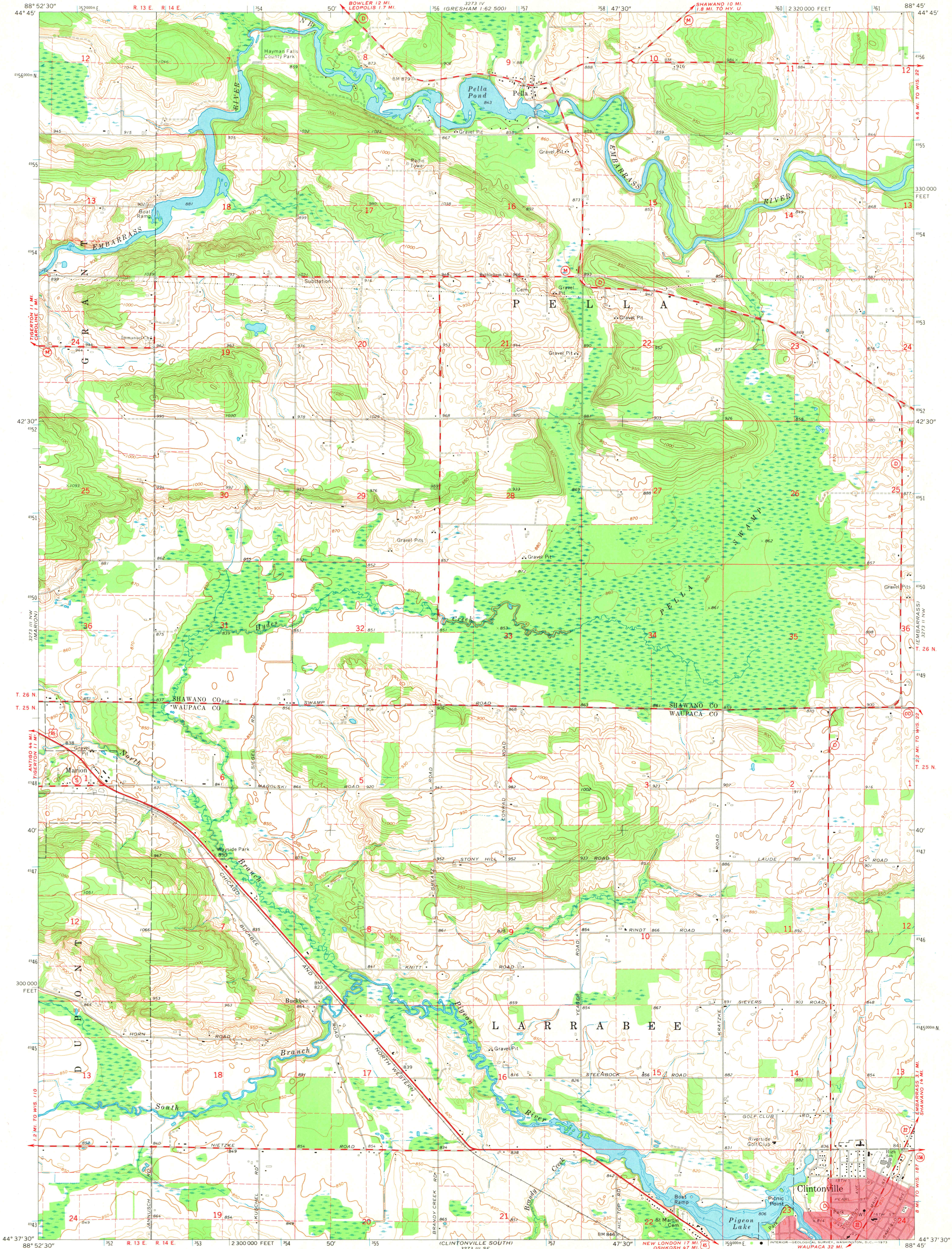
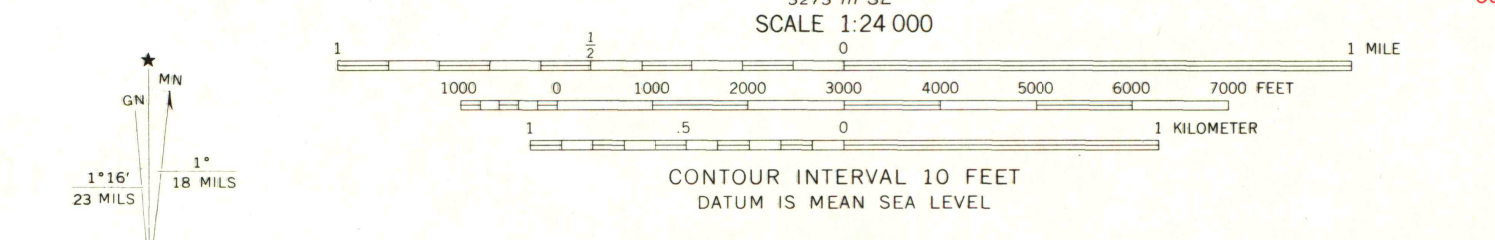


UNITED STATES
DEPARTMENT OF THE INTERIOR
GEOLOGICAL SURVEY

CLINTONVILLE NORTH QUADRANGLE
WISCONSIN
7.5 MINUTE SERIES (TOPOGRAPHIC)
NE 4 CLINTONVILLE 15' QUADRANGLE



Mapped, edited, and published by the Geological Survey
Control by USGS and USC&GS
Topography by photogrammetric methods from aerial photographs taken 1968. Field checked 1970
Depth curves compiled from charts furnished by Wisconsin Department of Natural Resources
Polyconic projection, 1927 North American datum
10,000-foot grid based on Wisconsin coordinate system, central zone
1000-meter Universal Transverse Mercator grid ticks, zone 16, shown in blue
Red tint indicates areas in which only landmark buildings are shown
Fine red dashed lines indicate selected fence and field lines where generally visible on aerial photographs. This information is un-checked



ROAD CLASSIFICATION
 Primary highway, hard surface ——— Light duty road, hard or improved surface
 Secondary highway, hard surface ——— Unimproved road
 Interstate Route (I) U. S. Route (U) State Route (S)

UTM GRID AND 1970 MAGNETIC NORTH DECLINATION AT CENTER OF SHEET
 THIS MAP COMPLIES WITH NATIONAL MAP ACCURACY STANDARDS FOR SALE BY U. S. GEOLOGICAL SURVEY, WASHINGTON, D. C. 20242
 AND BY THE WISCONSIN GEOLOGICAL AND NATURAL HISTORY SURVEY, MADISON, WISCONSIN 53706
 A FOLDER DESCRIBING TOPOGRAPHIC MAPS AND SYMBOLS IS AVAILABLE ON REQUEST

CLINTONVILLE NORTH, WIS.
 NE 4 CLINTONVILLE 15' QUADRANGLE
 N4437.5-W8845.7.5
 1970
 AMS 3273 III NE-SERIES V861

1970
copy
✓ 1-1
x

MAP AND AIR PHOTO LIBRARY

MAY 9 1973

University of Wisconsin