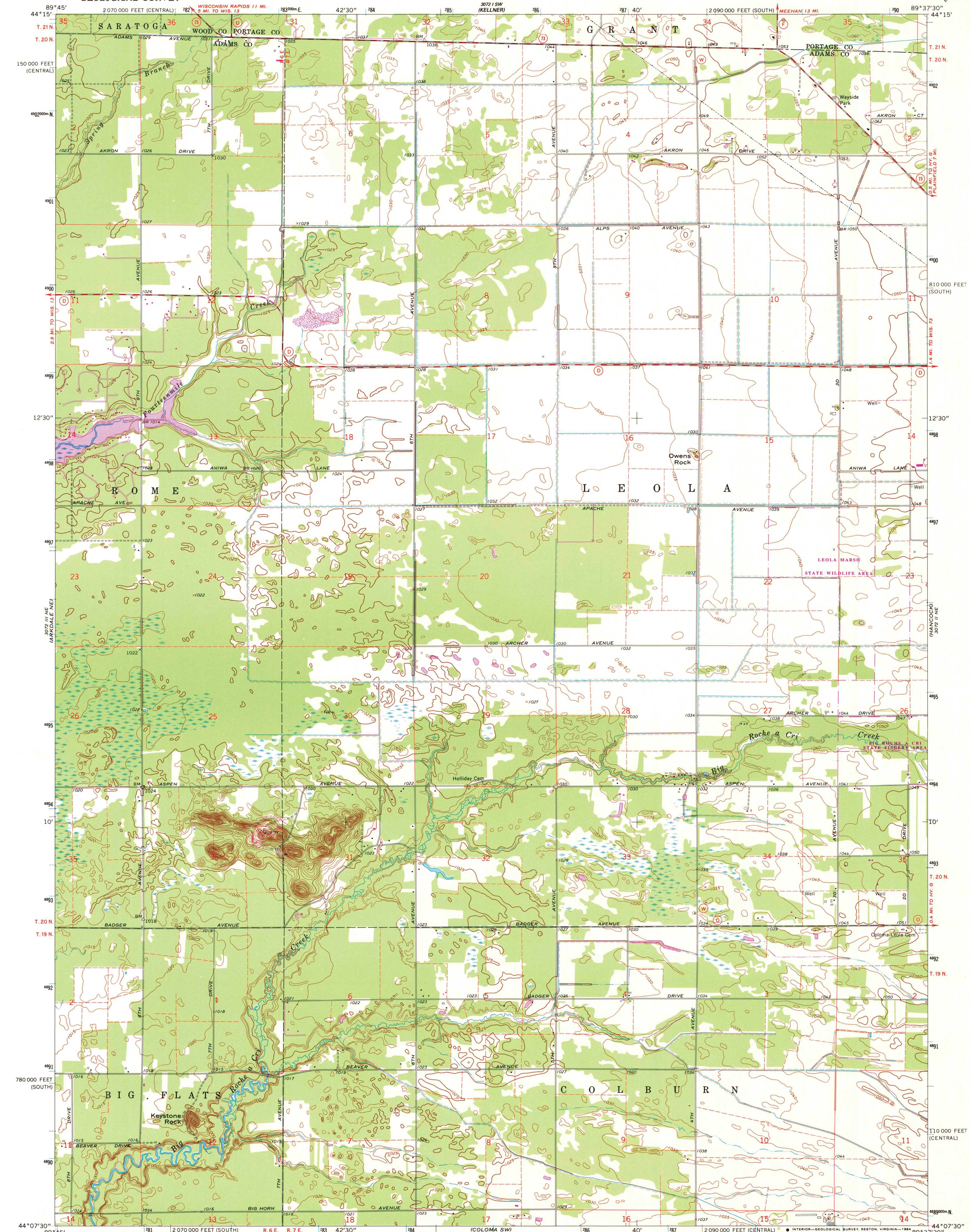


UNITED STATES
DEPARTMENT OF THE INTERIOR
GEOLOGICAL SURVEY

COLOMA NW QUADRANGLE
WISCONSIN
7.5 MINUTE SERIES (TOPOGRAPHIC)



Mapped, edited, and published by the Geological Survey

Control by USGS and USC&GS

Topography by photogrammetric methods from aerial photographs taken 1964 and planetable surveys 1968

Polyconic projection, 1927 North American datum

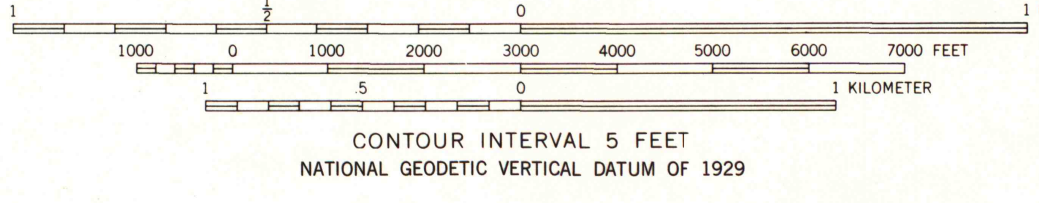
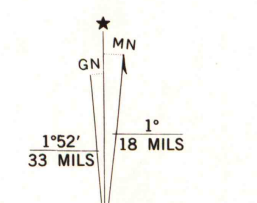
10,000-foot grids based on Wisconsin coordinate system, south and central zones

1000-meter Universal Transverse Mercator grid ticks, zone 16, shown in blue

Fine dashed lines indicate selected fence and field lines where generally visible on aerial photographs. This information is unchecked

To place on the predicted North American Datum 1983, move the projection lines 5 meters north and 10 meters east as shown by dashed corner ticks

There may be private inholdings within the boundaries of the National or State reservations shown on this map



ROAD CLASSIFICATION

Secondary highway, all weather, hard surface	Light-duty road, all weather, improved surface
Unimproved road, fair or dry weather	State Route

THIS MAP COMPLIES WITH NATIONAL MAP ACCURACY STANDARDS FOR SALE BY U.S. GEOLOGICAL SURVEY, RESTON, VIRGINIA 22092 AND WISCONSIN GEOLOGICAL AND NATURAL HISTORY SURVEY, MADISON, WISCONSIN 53706 A FOLDER DESCRIBING TOPOGRAPHIC MAPS AND SYMBOLS IS AVAILABLE ON REQUEST

Revisions shown in purple compiled from aerial photographs taken 1982 and other sources. This information not field checked. Map edited 1984

COLOMA NW, WIS.

44089-B6-TF-024

1968
PHOTOREVISED 1984
DMA 3072 II NW—SERIES V861

A.H. ROBINSON
MAP LIBRARY
APR 29 1985
University of Wisconsin
Madison

1984
COPY
1-1
U.S. Regional Depository Copy
DO NOT DISCARD