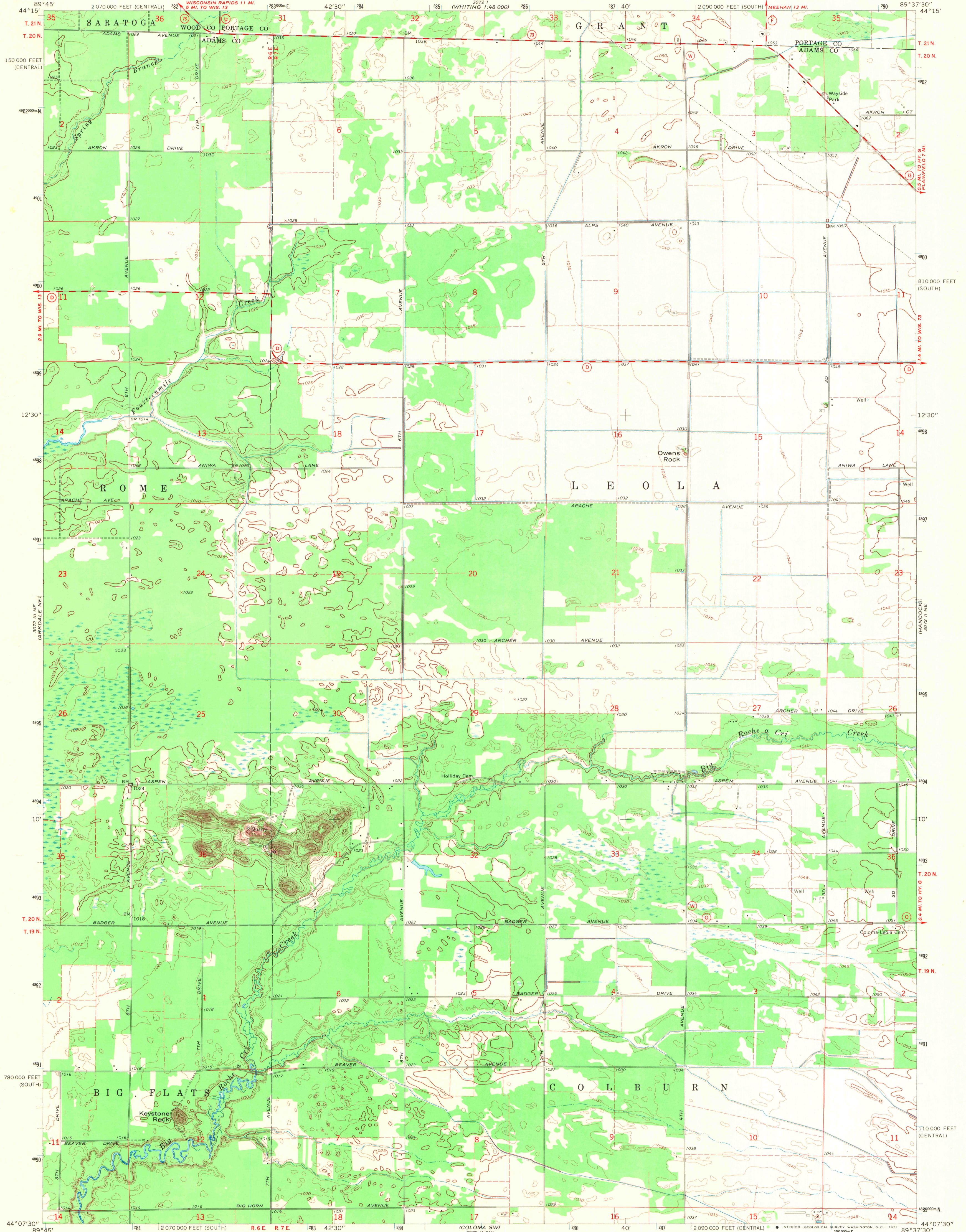
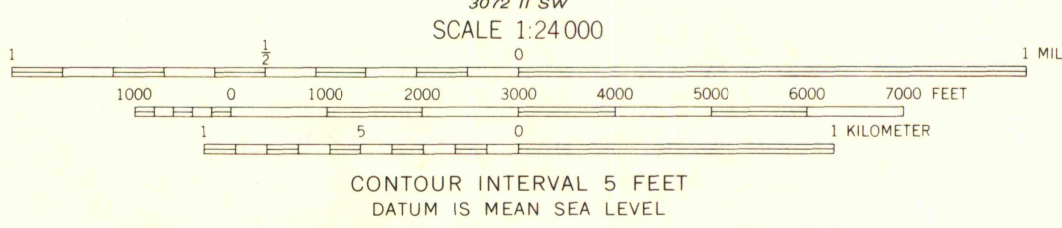


UNITED STATES
DEPARTMENT OF THE INTERIOR
GEOLOGICAL SURVEY

COLOMA NW QUADRANGLE
WISCONSIN
7.5 MINUTE SERIES (TOPOGRAPHIC)
NW/4 COLOMA 15' QUADRANGLE



Mapped, edited, and published by the Geological Survey
Control by USGS and USC&GS
Topography by photogrammetric methods from aerial
photographs taken 1964 and planetable surveys 1968
Polyconic projection. 1927 North American datum
10,000-foot grids based on Wisconsin coordinate system,
south and central zones
1000-meter Universal Transverse Mercator grid ticks,
zone 16, shown in blue
Fine red dashed lines indicate selected fence and field lines where
generally visible on aerial photographs. This information is unchecked



FEB 10 2005

ROAD CLASSIFICATION
Secondary highway, all weather, Light duty road, all weather,
hard surface improved surface
Unimproved road, fair or dry
weather
State Route



ARTHUR H. ROBINSON MAP LIBRARY
University of Wisconsin-Madison

COLOMA NW, WIS.
NW/4 COLOMA 15' QUADRANGLE
N4407.5-W8937.5/7.5
1968

AMS 3072 II NW-SERIES W861

1968
copy
1-4