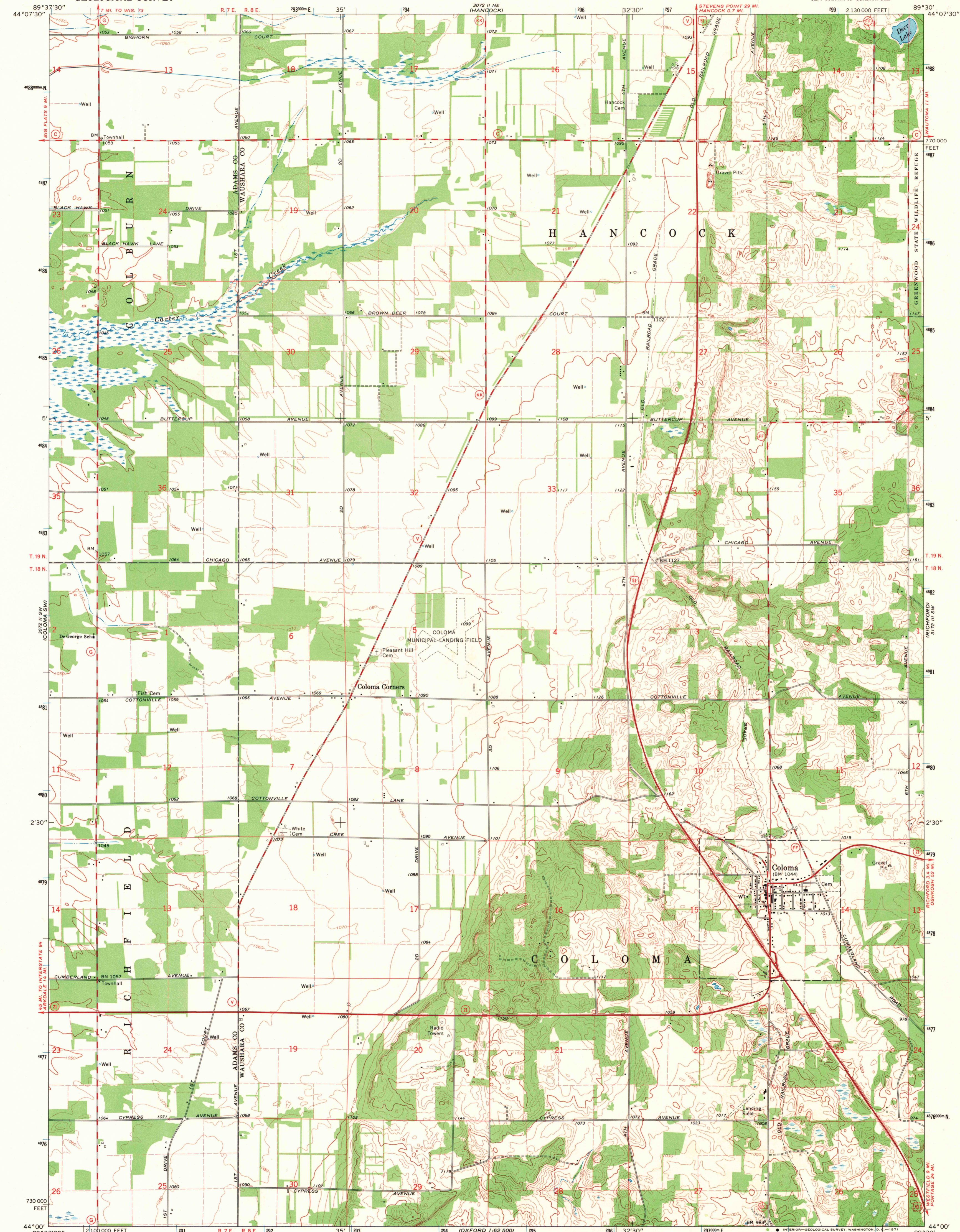
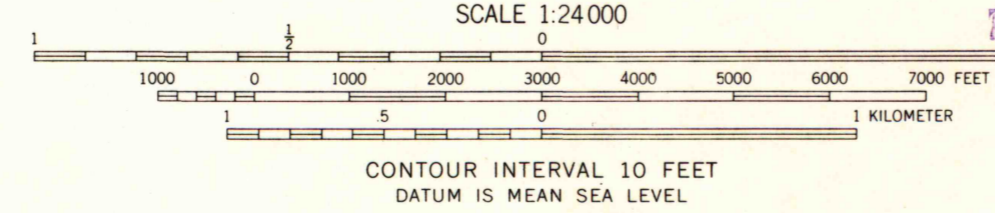
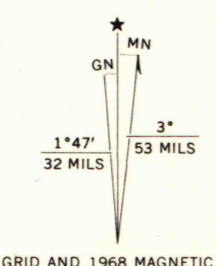


UNITED STATES
DEPARTMENT OF THE INTERIOR
GEOLOGICAL SURVEY

COLOMA QUADRANGLE
WISCONSIN
7.5 MINUTE SERIES (TOPOGRAPHIC)



Mapped, edited, and published by the Geological Survey
Control by USGS and USC&GS
Topography by photogrammetric methods from aerial
photographs taken 1964. Field checked 1968
Polyconic projection. 1927 North American datum
10,000-foot grid based on Wisconsin coordinate system, south zone
1000-meter Universal Transverse Mercator grid ticks,
zone 16, shown in blue
Fine red dashed lines indicate selected fence and field lines where
generally visible on aerial photographs
This information is unchecked



ROAD CLASSIFICATION

Primary highway, all weather, hard surface	Light-duty road, all weather, improved surface
Secondary highway, all weather, hard surface	Unimproved road, fair or dry weather

U. S. Route State Route

THIS MAP COMPLIES WITH NATIONAL MAP ACCURACY STANDARDS
FOR SALE BY U. S. GEOLOGICAL SURVEY, WASHINGTON, D. C. 20242
AND BY THE WISCONSIN GEOLOGICAL AND NATURAL HISTORY SURVEY, MADISON, WISCONSIN 53706
A FOLDER DESCRIBING TOPOGRAPHIC MAPS AND SYMBOLS IS AVAILABLE ON REQUEST

COLOMA, WIS.
SE/4 COLOMA 15' QUADRANGLE
N4400-W8930/7.5

1968
AMS 3072 II SE-SERIES V861

1968
copy
1-1

JUN 20 1971
University of Wisconsin

QUADRANGLE LOCATION

OXFORD 1:62,500
3071 I SW
3072 II SW
3073 III SW
3074 IV SW
3075 V SW
3076 VI SW
3077 VII SW
3078 VIII SW
3079 IX SW
3080 X SW
3081 XI SW
3082 XII SW
3083 XIII SW
3084 XIV SW
3085 XV SW
3086 XVI SW
3087 XVII SW
3088 XVIII SW
3089 XIX SW
3090 XX SW
3091 XXI SW
3092 XXII SW
3093 XXIII SW
3094 XXIV SW
3095 XXV SW
3096 XXVI SW
3097 XXVII SW
3098 XXVIII SW
3099 XXIX SW
3100 XXX SW

WATSON 1:62,500
3101 I NE
3102 II NE
3103 III NE
3104 IV NE
3105 V NE
3106 VI NE
3107 VII NE
3108 VIII NE
3109 IX NE
3110 X NE
3111 XI NE
3112 XII NE
3113 XIII NE
3114 XIV NE
3115 XV NE
3116 XVI NE
3117 XVII NE
3118 XVIII NE
3119 XIX NE
3120 XX NE
3121 XXI NE
3122 XXII NE
3123 XXIII NE
3124 XXIV NE
3125 XXV NE
3126 XXVI NE
3127 XXVII NE
3128 XXVIII NE
3129 XXIX NE
3130 XXX NE