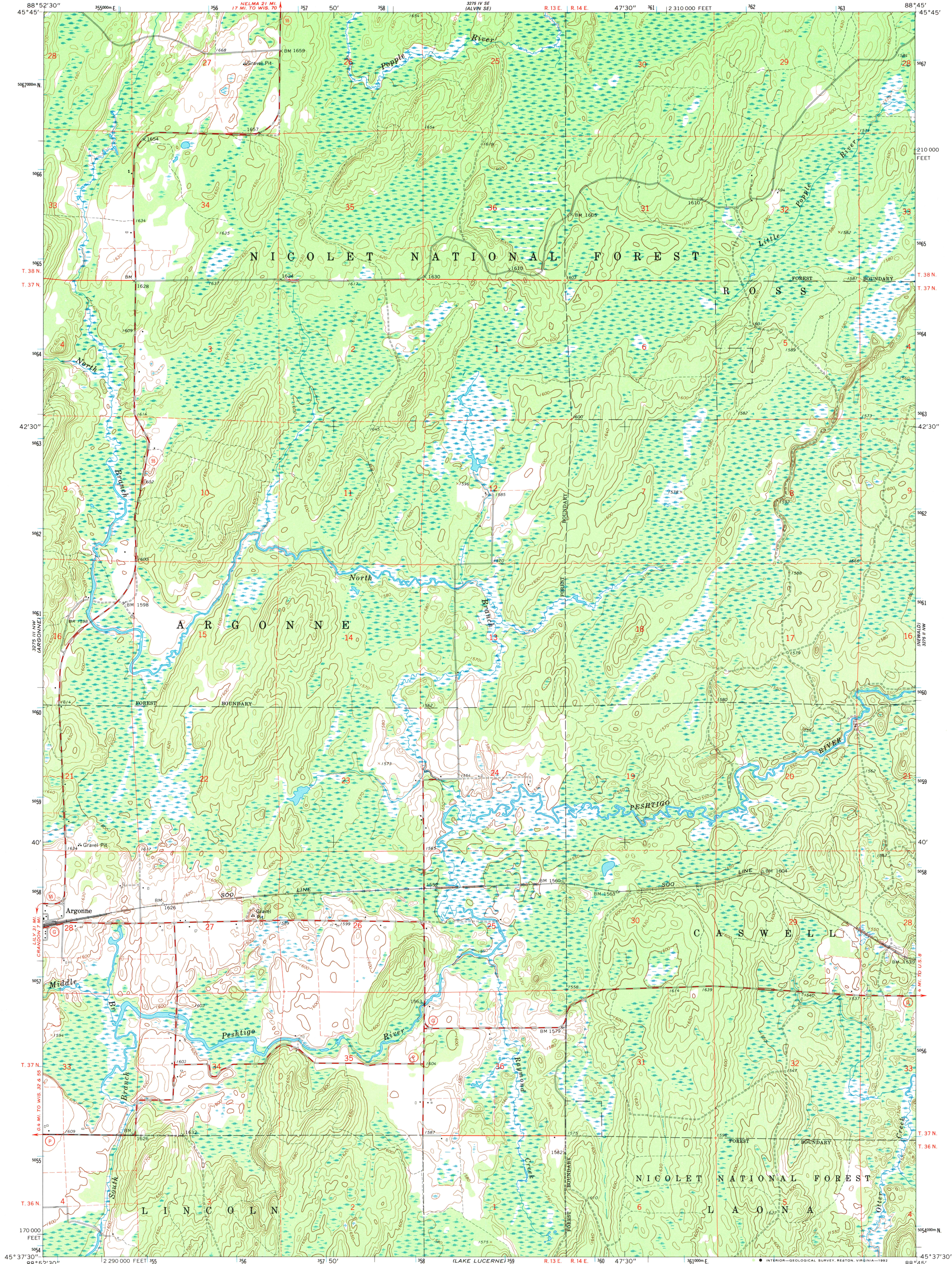


UNITED STATES  
DEPARTMENT OF THE INTERIOR  
GEOLOGICAL SURVEY

CRANDON NE QUADRANGLE  
WISCONSIN—FOREST CO.  
7.5 MINUTE SERIES (TOPOGRAPHIC)



Mapped, edited, and published by the Geological Survey  
Control by USGS and USC&GS

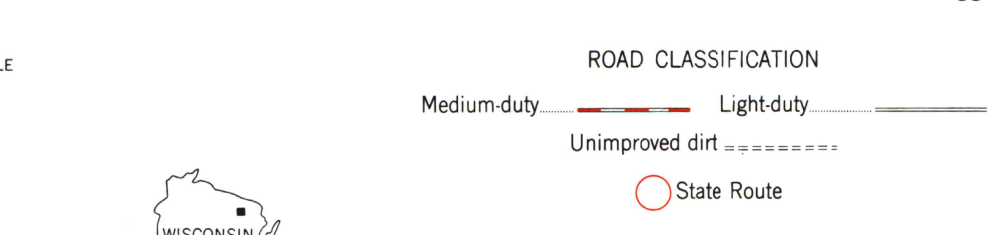
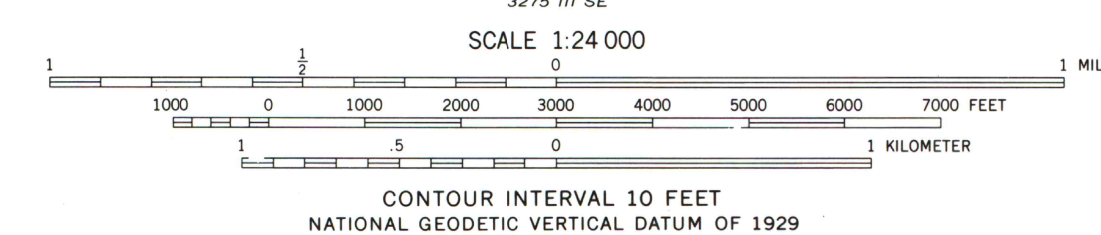
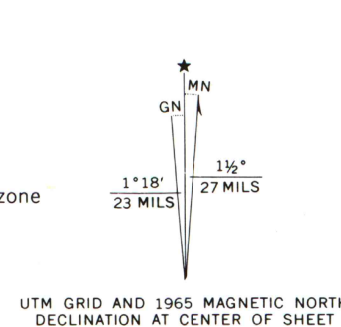
Topography by photogrammetric methods from aerial  
photographs taken 1963. Field checked 1965

Polyconic projection. 1927 North American datum  
10,000-foot grid based on Wisconsin coordinate system, north zone  
1000-meter Universal Transverse Mercator grid ticks,  
zone 16, shown in blue

Fine red dashed lines indicate selected fence and field lines  
where generally visible on aerial photographs  
This information is unchecked

There may be private inholdings within the boundaries of  
the National or State reservations shown on this map

Map photoinspected 1981  
No major culture or drainage changes observed



CRANDON NE, WIS.

45088-F7-TF-024

The difference between 1927 North American Datum and North  
American Datum of 1983 (NAD 83) for 7.5-minute intersections  
is given in USGS Bulletin 1875. The NAD 83 is shown by  
dashed corner ticks

1965  
PHOTOINSPECTED 1981  
DMA 3275 III NE—SERIES Y861

1981  
Copy  
1-1

U.S. Regional  
Depository Copy  
DO NOT DISCARD

A.H. ROBINSON  
MAP LIBRARY  
JUN 21 1992

University of Wisconsin  
Madison