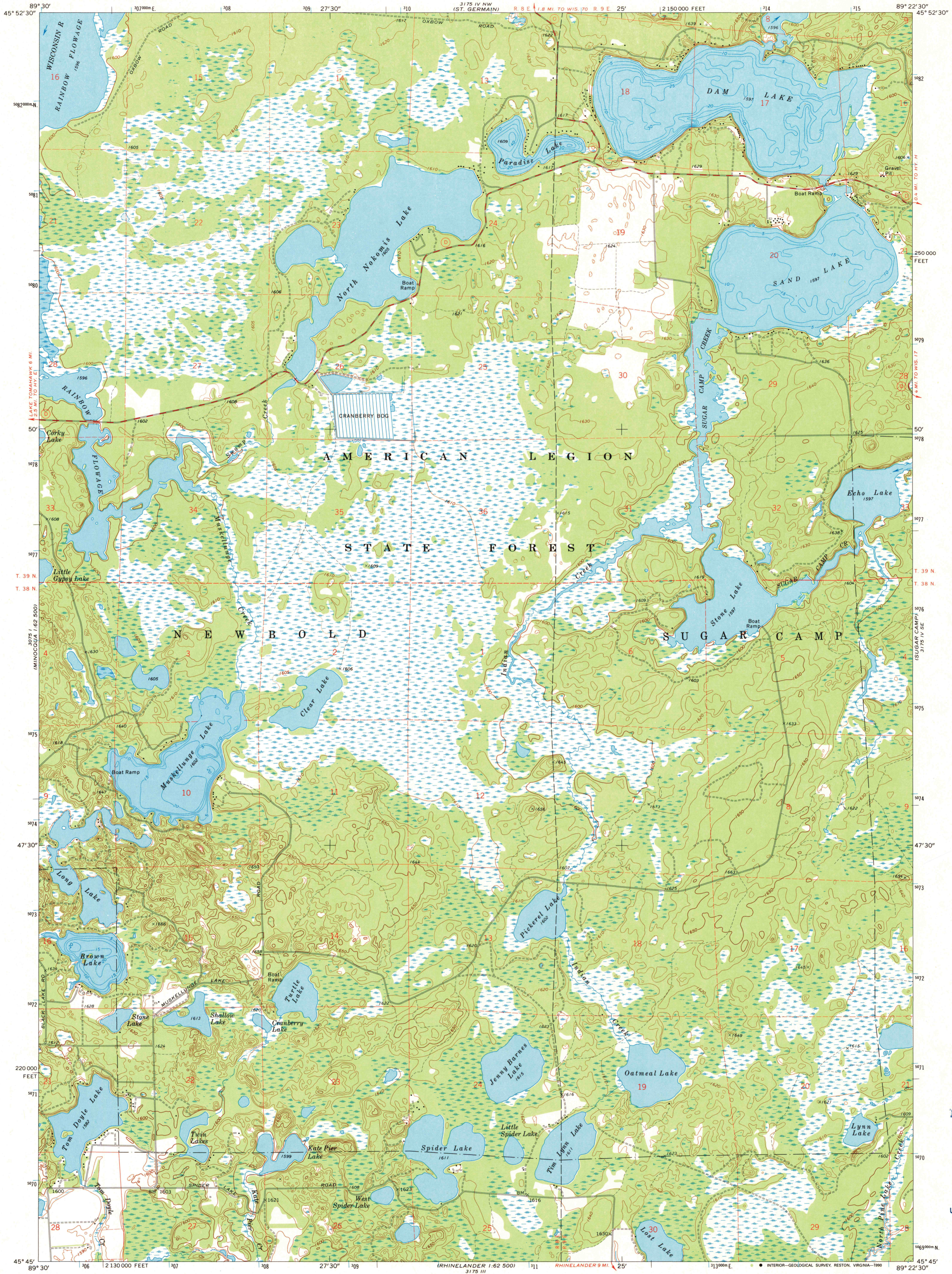
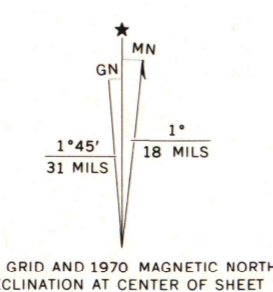


UNITED STATES
DEPARTMENT OF THE INTERIOR
GEOLOGICAL SURVEY

DAM LAKE QUADRANGLE
WISCONSIN—ONEIDA CO.
7.5 MINUTE SERIES (TOPOGRAPHIC)
SW/4 ROBBINS 15' QUADRANGLE



Mapped, edited, and published by the Geological Survey
Control by USGS and USC&GS
Topography by photogrammetric methods from aerial
photographs taken 1966. Field checked 1970
Depth curves compiled from charts furnished by
Wisconsin Department of Natural Resources
Polyconic projection. 1927 North American datum
10,000-foot grid based on Wisconsin coordinate system, north zone
1000-meter Universal Transverse Mercator grid ticks,
zone 16, shown in blue
Fine red dashed lines indicate selected fence and field lines where
generally visible on aerial photographs. This information is unchecked
Map photoinspected 1981
No major culture or drainage changes observed



SCALE 1:24 000
1 MILE
1000 0 1000 2000 3000 4000 5000 6000 7000 FEET
1 0.5 1 KILOMETER
CONTOUR INTERVAL 10 FEET
DOTTED LINES REPRESENT 5-FOOT CONTOURS
DATUM IS MEAN SEA LEVEL



ROAD CLASSIFICATION
Secondary highway, all weather. Light-duty road, all weather,
hard surface. improved surface
Unimproved road, fair or dry
weather
State Route

THIS MAP COMPLIES WITH NATIONAL MAP ACCURACY STANDARDS
FOR SALE BY U.S. GEOLOGICAL SURVEY, DENVER, COLORADO 80225, OR RESTON, VIRGINIA 22092
AND WISCONSIN GEOLOGICAL AND NATURAL HISTORY SURVEY, MADISON, WISCONSIN 53706
A FOLDER DESCRIBING TOPOGRAPHIC MAPS AND SYMBOLS IS AVAILABLE ON REQUEST

DAM LAKE, WIS.
SW/4 ROBBINS 15' QUADRANGLE
N4545—W8922.5/7.5
1970
PHOTOINSPECTED 1981
AMS 3175 IV SW—SERIES V861

U.S. Regional
Depository Copy
DO NOT DISCARD

A.H. ROBINSON
MAP LIBRARY
DEC - 5 1990
University of Wisconsin
Madison

1981
COPY
1-1