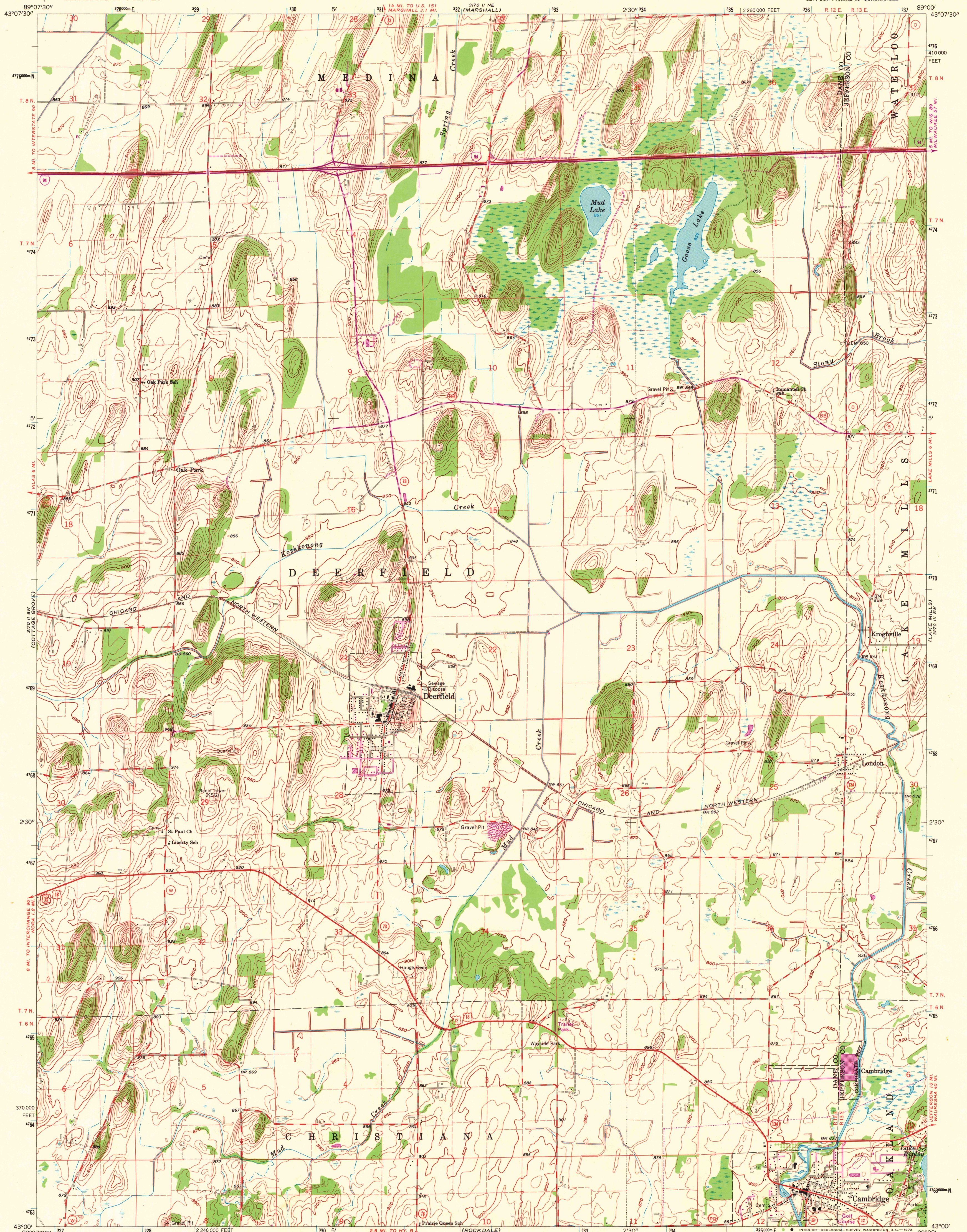
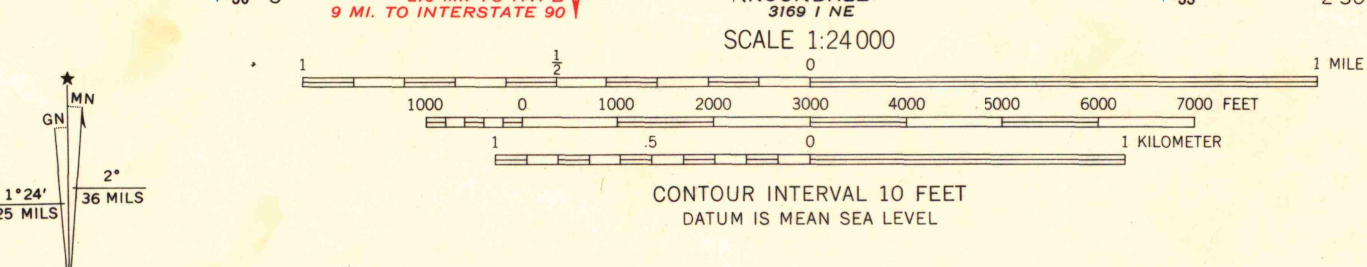


UNITED STATES  
DEPARTMENT OF THE INTERIOR  
GEOLOGICAL SURVEY

DEERFIELD QUADRANGLE  
WISCONSIN  
7.5 MINUTE SERIES (TOPOGRAPHIC)  
SE/4 SUN PRAIRIE 15' QUADRANGLE



Mapped, edited, and published by the Geological Survey in cooperation with State of Wisconsin agencies  
Control by USGS and USC&GS  
Topography by photogrammetric methods from aerial photographs taken 1960. Field checked 1962  
Polyconic projection. 1927 North American datum  
10,000-foot grid based on Wisconsin coordinate system, south zone  
1000-meter Universal Transverse Mercator grid ticks, zone 16, shown in blue  
Fine red dashed lines indicate selected fence and field lines where generally visible on aerial photographs. This information is uncheckd  
Revisions shown in purple compiled from aerial photographs taken 1971. This information not field checked



ROAD CLASSIFICATION  
Heavy-duty ——— Light-duty ———  
Medium-duty ——— Unimproved dirt - - - - -  
U.S. Route ——— State Route ———  
Interstate Route ———  
DEERFIELD, WIS.  
SE/4 SUN PRAIRIE 15' QUADRANGLE  
N4300—W8900/7.5  
1962  
PHOTOREVISED 1971  
AMS 3170 II SE—SERIES V861

1971  
copy  
1-1

MAP AND AIR PHOTO  
LIBRARY  
AUG 17 1972  
University of Wisconsin