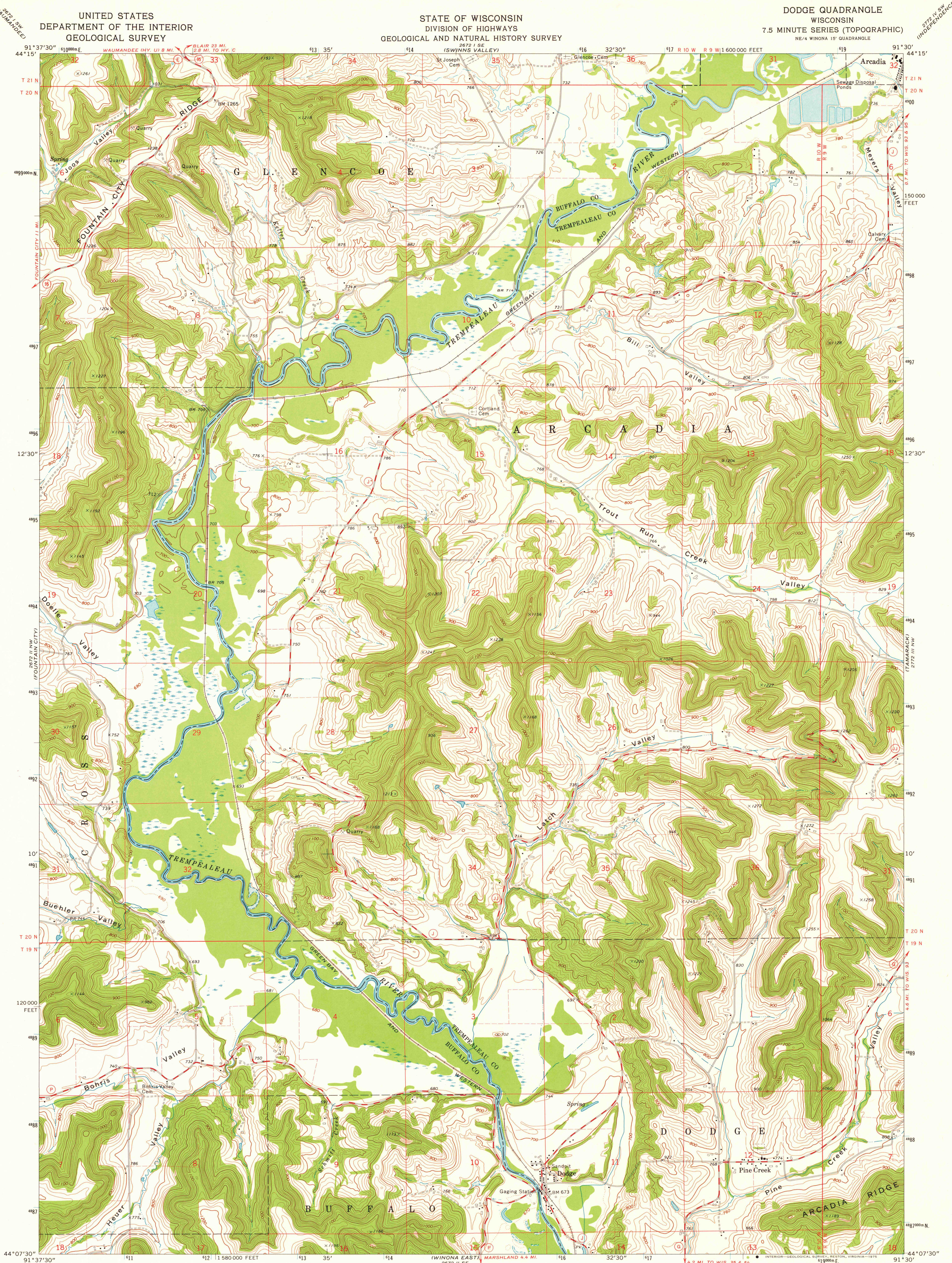


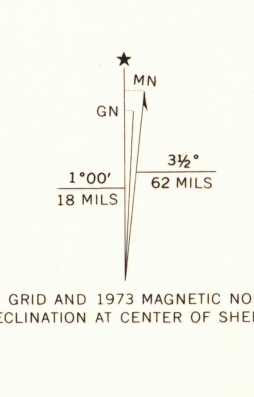
UNITED STATES
DEPARTMENT OF THE INTERIOR
GEOLOGICAL SURVEY

STATE OF WISCONSIN
DIVISION OF HIGHWAYS
GEOLOGICAL AND NATURAL HISTORY SURVEY

DODGE QUADRANGLE
WISCONSIN
7.5 MINUTE SERIES (TOPOGRAPHIC)
NE/4 WINONA 15' QUADRANGLE



Maped, edited, and published by the Geological Survey in cooperation with the Wisconsin Division of Highways and Wisconsin Geological and Natural History Survey. Control by USGS and NGS/NOAA. Topography by photogrammetric methods from aerial photographs taken 1973. Field checked 1973. Projection and 10,000-foot grid ticks: Wisconsin coordinate system, central zone (Lambert conformal conic). 1000-metre Universal Transverse Mercator grid ticks, zone 15, shown in blue. 1927 North American datum. Fine red dashed lines indicate selected fence and field lines where generally visible on aerial photographs. This information is unchecked.



SCALE 1:24 000
CONTOUR INTERVAL 20 FEET
DOTTED LINES REPRESENT 10-FOOT CONTOURS
NATIONAL GEODETIC VERTICAL DATUM OF 1929
THIS MAP COMPLIES WITH NATIONAL MAP ACCURACY STANDARDS FOR SALE BY U.S. GEOLOGICAL SURVEY, RESTON, VIRGINIA 22092 AND BY THE WISCONSIN GEOLOGICAL AND NATURAL HISTORY SURVEY, MADISON, WISCONSIN 53706 A FOLDER DESCRIBING TOPOGRAPHIC MAPS AND SYMBOLS IS AVAILABLE ON REQUEST

ROAD CLASSIFICATION

Primary highway, hard surface	Light-duty road, hard or improved surface
Secondary highway, hard surface	Unimproved road

Interstate Route U. S. Route State Route

MAP AND AIR PHOTO LIBRARY
FEB 9 - 1976

DODGE, WIS.
NE/4 WINONA 15' QUADRANGLE
N4407.5-W9130.7.5
1973
AMS 2672 II NE-SERIES V861

1973
COPY
✓ 1-1