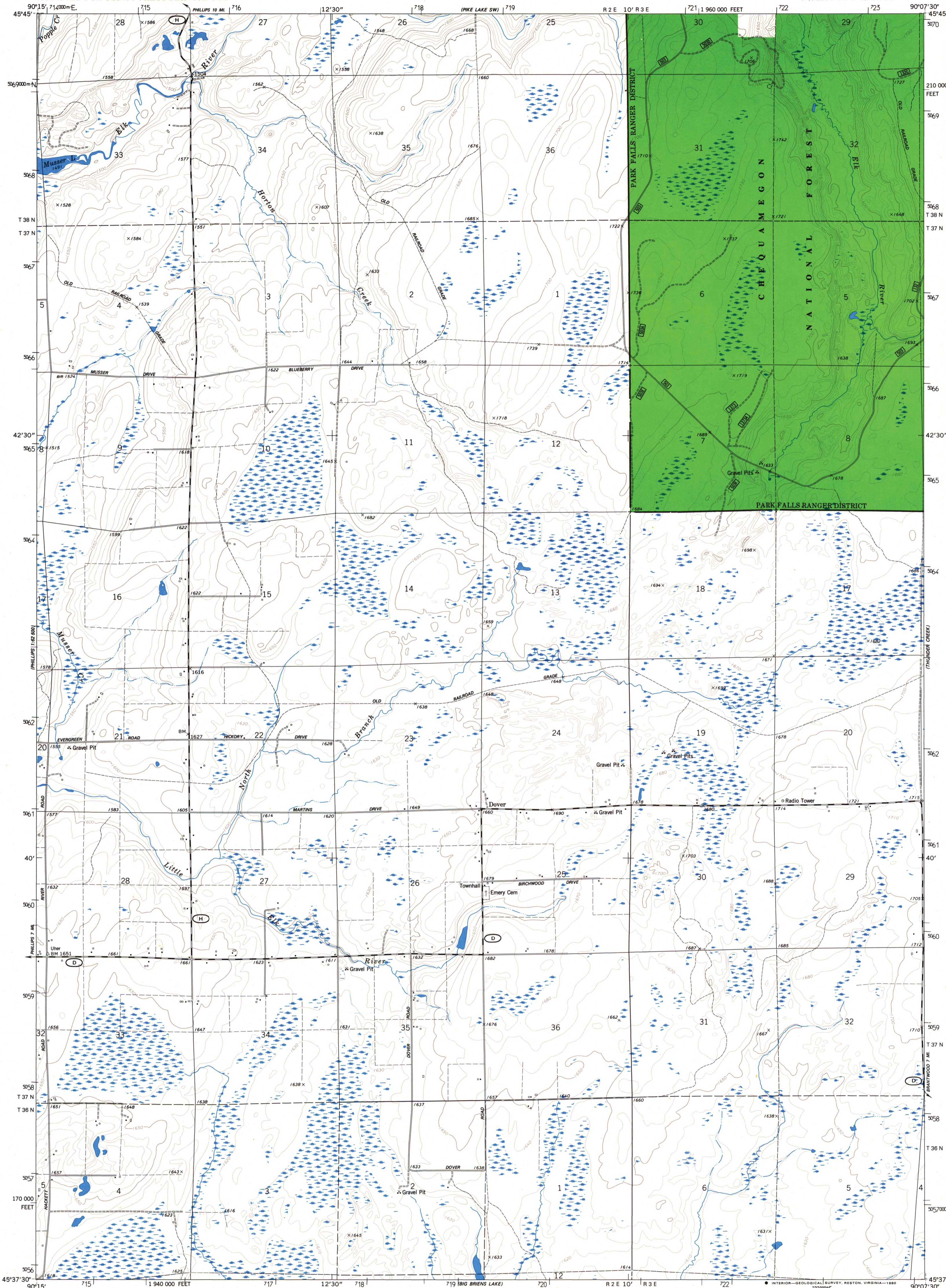
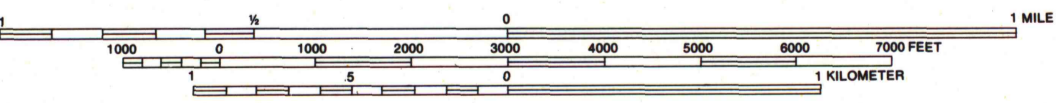
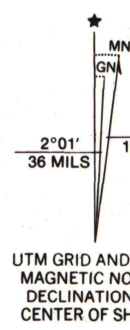


UNITED STATES  
DEPARTMENT OF THE INTERIOR  
GEOLOGICAL SURVEY  
MODIFIED FOR USDA FOREST SERVICE USE

DOVER QUADRANGLE  
WISCONSIN-PRICE CO.  
7.5 MINUTE SERIES (TOPOGRAPHIC)  
NW/4 BRANTWOOD 19' QUADRANGLE

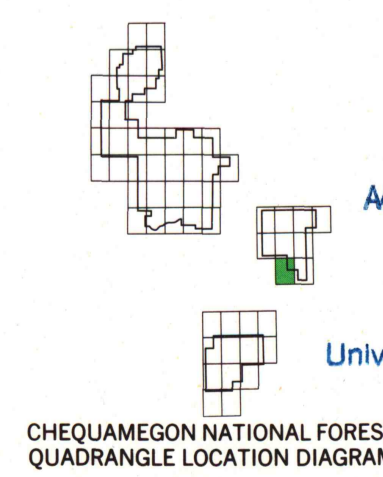


Base map prepared by the U.S. Geological Survey  
Control by USGS and NOS/NOAA  
Topography by photogrammetric methods from aerial photographs taken 1974. Field checked 1975. Map edited 1979  
Projection and 10,000-foot grid ticks: Wisconsin coordinate system, north zone (Lambert conformal conic)  
1000-meter Universal Transverse Mercator grid, zone 15  
1927 North American Datum  
To place on the predicted North American Datum 1983 move the projection lines 6 meters north and 11 meters east as shown by dashed corner ticks  
There may be private inholdings within the boundaries of the National or State reservations shown on this map  
Modification to USGS base map by the Geomatics Service Center from 1980 and 1981 aerial photography and 1983 correction guides furnished by the Eastern Region



CONTOUR INTERVAL 10 FEET  
NATIONAL VERTICAL DATUM OF 1929

TOWNSHIP AND SECTION LINE CLASSIFICATION		LEGEND	
—	National Forest Boundary	—	Primary Highway
—	National Forest Land as of 1983	—	Secondary Highway
—	Surveyed, Location Reliable	—	Improved Light Duty
—	Surveyed, Location Unreliable	—	Unimproved Dirt
—	Road, Location Approximate	—	Trail
—	Trail, Location Approximate	—	U.S. Highway
		—	State Highway
		—	County Highway
		—	Forest Road
		—	Forest Trail



Copies of this map are available for purchase at  
Forest Supervisor's Headquarters  
157 North Fifth Avenue  
Park Falls, WI 54552

ARTHUR H. ROBINSON MAP LIBRARY  
University of Wisconsin-Madison  
JUN 16 1986  
University of Wisconsin-Madison  
DOVER, WIS. A13, 28:042/7/985  
NW/4 BRANTWOOD 19' QUADRANGLE  
N4537.5-W9007.5/7.5  
1979  
DMA 2975 II NW-SERIES V881

6  
4122  
.CS  
524  
.V55  
Sh. 45  
Copy 1

U.S. Depository Copy  
Do Not Discard

SEP - 6 1985