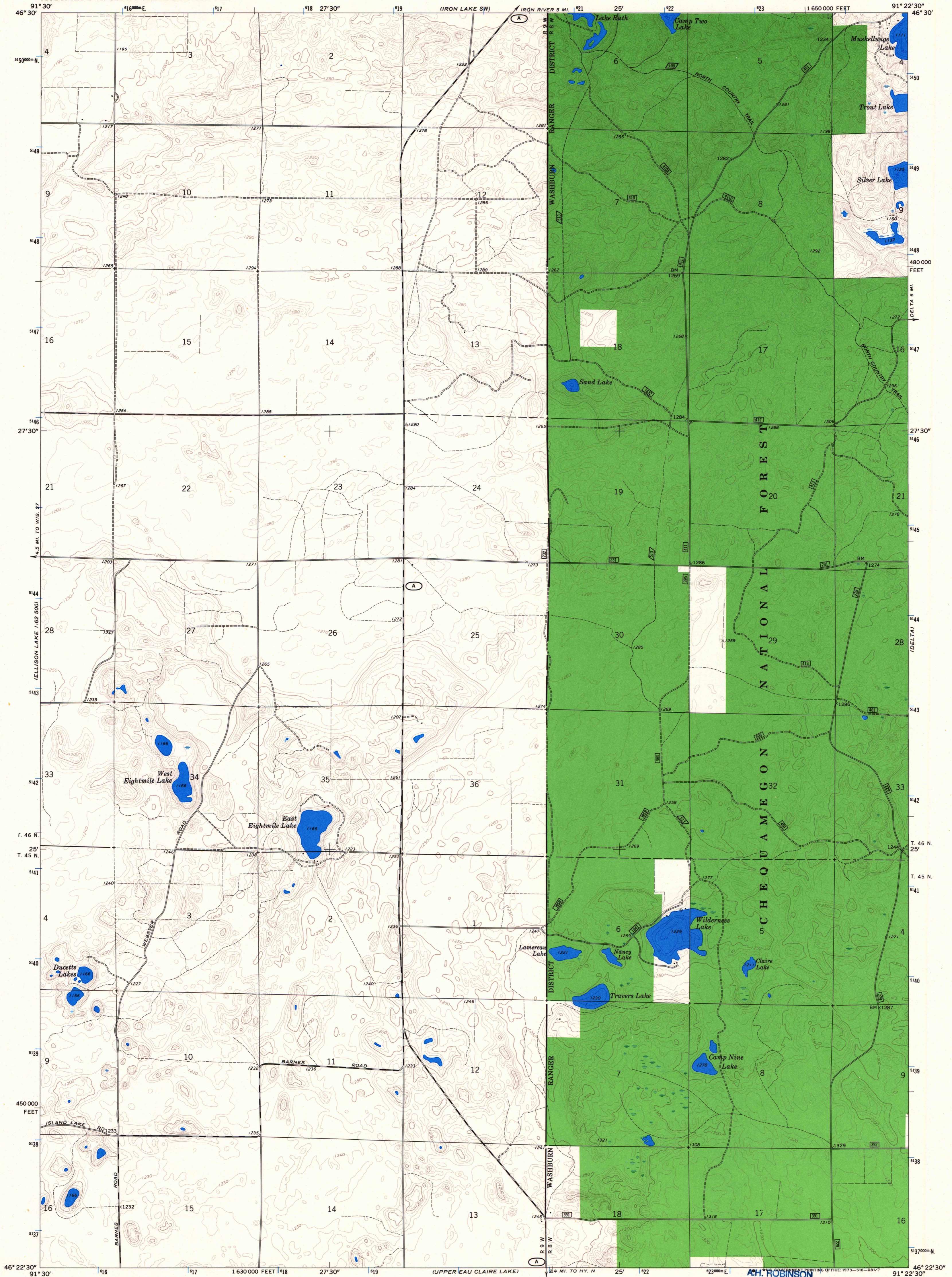
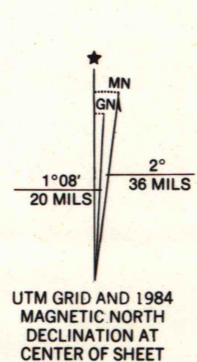


UNITED STATES
DEPARTMENT OF THE INTERIOR
GEOLOGICAL SURVEY
MODIFIED FOR USDA FOREST SERVICE USE

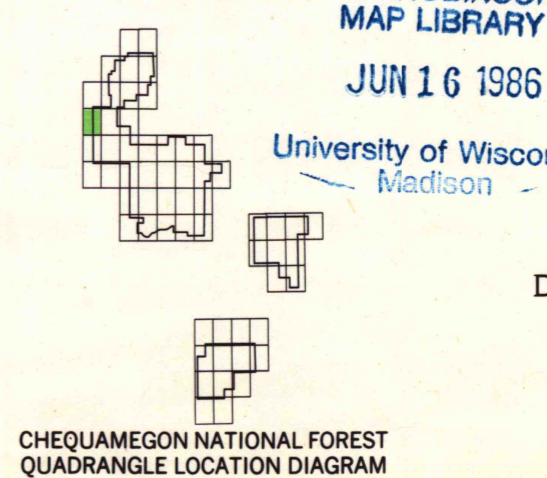
DRUMMOND NW QUADRANGLE
WISCONSIN—BAYFIELD CO.
7.5 MINUTE SERIES (TOPOGRAPHIC)
NW 1/4 DRUMMOND 15' QUADRANGLE



Base map prepared by the U.S. Geological Survey in cooperation with the Wisconsin Highway Commission and Wisconsin Geological and Natural History Survey. Control by USGS and USC&GS. Topography by photogrammetric methods from aerial photographs taken 1970. Field checked 1971. Depth curves compiled from charts furnished by Wisconsin Department of Natural Resources. Polyconic projection. 1927 North American datum. 10,000-foot grid based on Wisconsin coordinate system, north zone. 1000-meter Universal Transverse Mercator grid ticks, zone 15, shown in blue. Modification to USGS base map by the Geometrics Service Center from 1980 and 1981 aerial photography and 1983 correction guides furnished by the Eastern Region.



- LEGEND
- National Forest Boundary
 - National Forest Land as of 1983
 - TOWNSHIP AND SECTION LINE CLASSIFICATION
 - Surveyed, Location Reliable
 - Surveyed, Location Unreliable
 - Road, Location Approximate
 - Trail, Location Approximate
 - Primary Highway
 - Secondary Highway
 - Improved Light Duty
 - Unimproved Dirt
 - Trail
 - U.S. Highway
 - State Highway
 - County Highway
 - Forest Road
 - Forest Trail



DRUMMOND NW, WIS.
NW 1/4 DRUMMOND 15' QUADRANGLE
N4622.5—W9122.5/7.5
1971
DMA 2776 IV NW—SERIES Y861
U.S. GOVERNMENT PRINTING OFFICE: 1985—555-804

6
4122
.05
524
.VSS
Sh. 10
Copy 1

U.S. Depository Copy
Do Not Discard
AUG 7 1985

A13.281 C427/985
46091-D4
30-6 MAR 605
Sh. 10