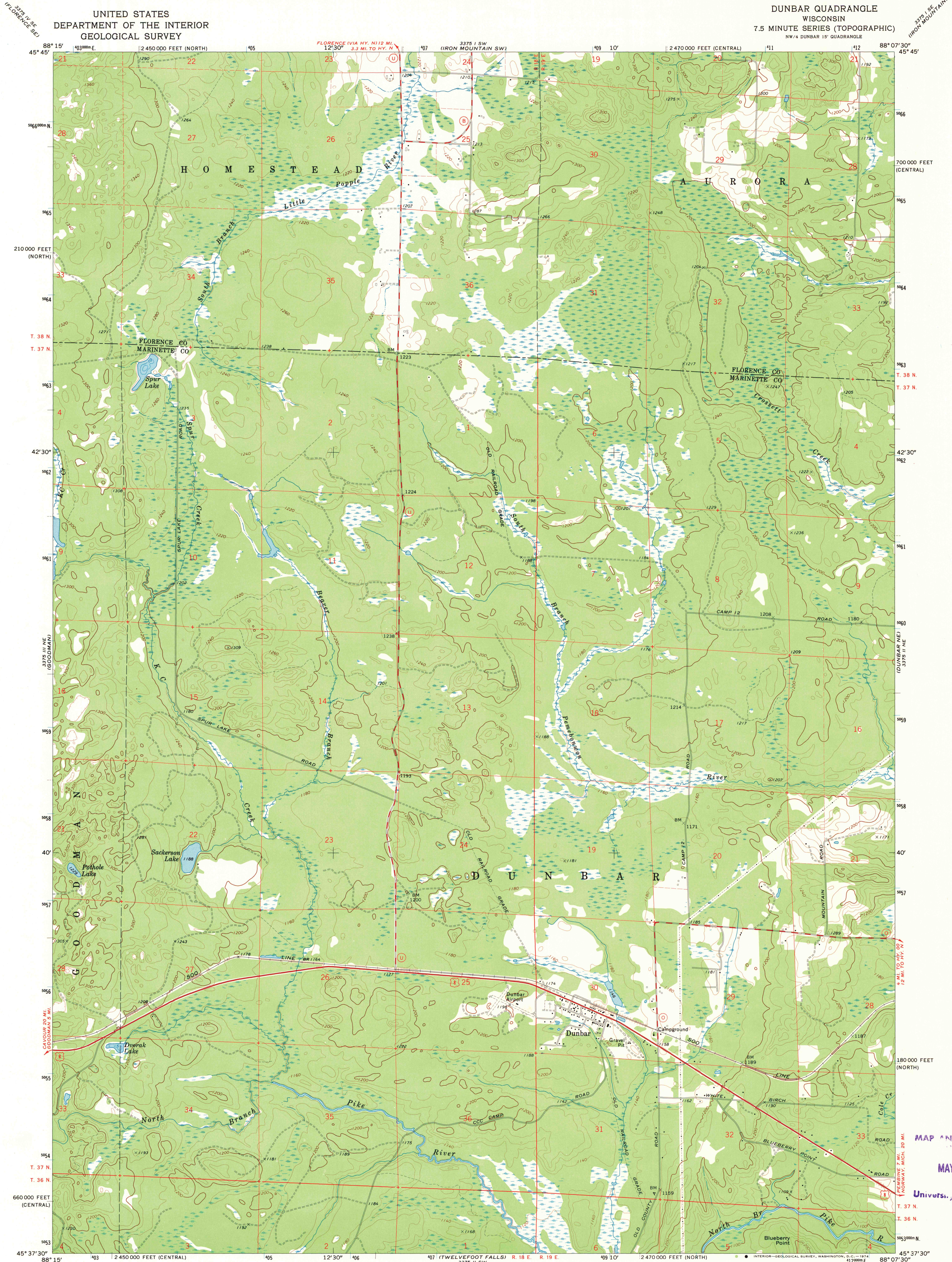
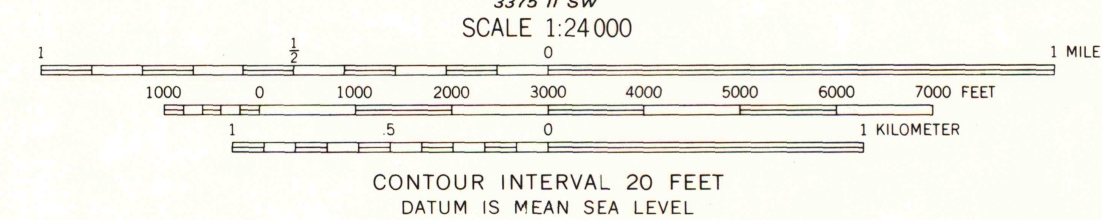
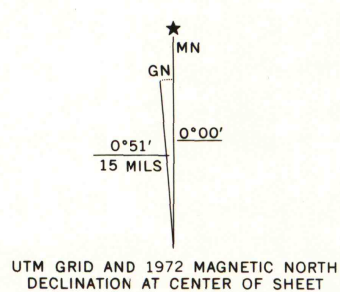


UNITED STATES  
DEPARTMENT OF THE INTERIOR  
GEOLOGICAL SURVEY

DUNBAR QUADRANGLE  
WISCONSIN  
7.5 MINUTE SERIES (TOPOGRAPHIC)  
NW/4 DUNBAR 15' QUADRANGLE



Mapped, edited, and published by the Geological Survey  
Control by USGS and USC&GS  
Topography by photogrammetric methods from aerial  
photographs taken 1971. Field checked 1972  
Hydrography compiled from information furnished by  
Wisconsin Department of Natural Resources  
Projection: Wisconsin coordinate system, central zone  
(Lambert conformal conic)  
10,000-foot grid ticks based on Wisconsin coordinate  
system, central and north zones  
1000-meter Universal Transverse Mercator grid ticks,  
zone 16, shown in blue. 1927 North American datum  
Fine red dashed lines indicate selected fence and field lines where  
generally visible on aerial photographs. This information is unchecked



THIS MAP COMPLIES WITH NATIONAL MAP ACCURACY STANDARDS  
FOR SALE BY U.S. GEOLOGICAL SURVEY, WASHINGTON, D.C. 20242  
AND BY THE WISCONSIN GEOLOGICAL AND NATURAL HISTORY SURVEY, MADISON, WISCONSIN 53706  
A FOLDER DESCRIBING TOPOGRAPHIC MAPS AND SYMBOLS IS AVAILABLE ON REQUEST



ROAD CLASSIFICATION  
Primary highway, hard surface  
Secondary highway, hard surface  
Unimproved road  
Interstate Route  
U.S. Route  
State Route

DUNBAR, WIS.  
NW/4 DUNBAR 15' QUADRANGLE  
N4537.5-W8807.5/7.5

1972

AMS 3375 II NW-SERIES W861

MAP AND AIR PHOTO  
LIBRARY  
MAY 19 1974  
University of Wisconsin

1972  
copy  
1-1