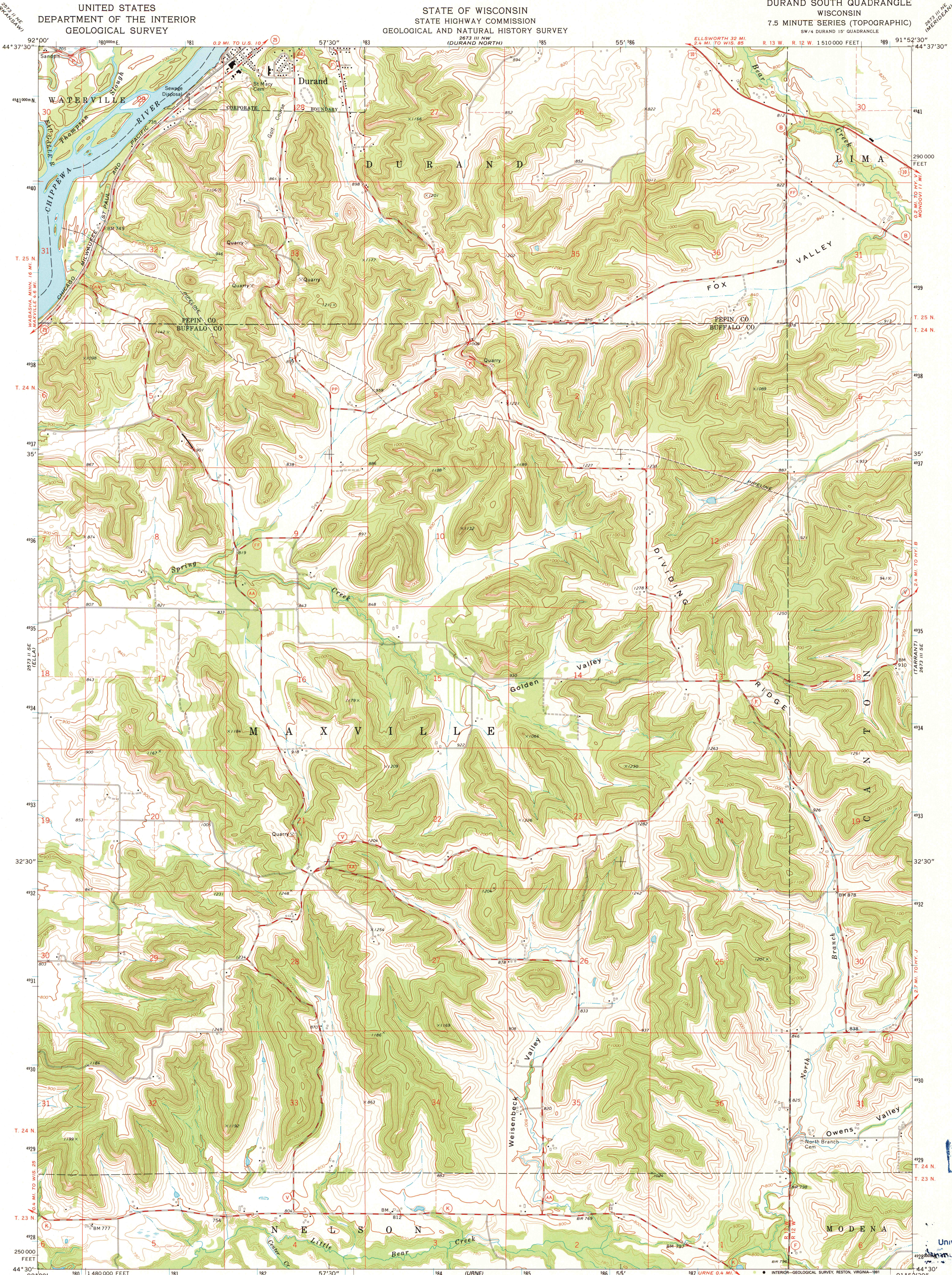


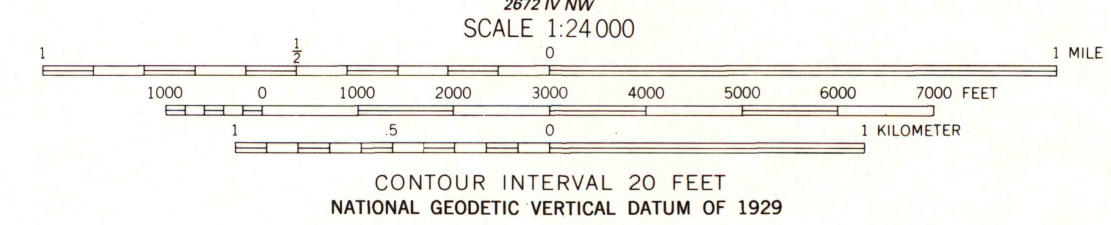
UNITED STATES
DEPARTMENT OF THE INTERIOR
GEOLOGICAL SURVEY

STATE OF WISCONSIN
STATE HIGHWAY COMMISSION
GEOLOGICAL AND NATURAL HISTORY SURVEY

DURAND SOUTH QUADRANGLE
WISCONSIN
7.5 MINUTE SERIES (TOPOGRAPHIC)
SW 1/4 DURAND 15' QUADRANGLE



Mapped, edited, and published by the Geological Survey in cooperation with the Wisconsin Highway Commission and Wisconsin Geological and Natural History Survey. Control by USGS and USC&GS. Topography by photogrammetric methods from aerial photographs taken 1972. Field checked 1972. Projection and 10,000-foot grid ticks: Wisconsin coordinate system, central zone (Lambert conformal conic). 1000-meter Universal Transverse Mercator grid ticks, zone 15, shown in blue. 1927 North American datum. Fine red dashed lines indicate selected fence and field lines where generally visible on aerial photographs. This information is unchecked. The difference between 1927 North American Datum and North American Datum of 1983 (NAD 83) for 7.5-minute intersections is given in USGS Bulletin 1875. The NAD 83 is shown by dashed corner ticks.



ROAD CLASSIFICATION
Primary highway, hard surface ——— Light-duty road, hard or improved surface ———
Secondary highway, hard surface ——— Unimproved road ———
○ Interstate Route ○ U. S. Route ○ State Route

DURAND SOUTH, WIS.
SW 1/4 DURAND 15' QUADRANGLE
44091-E8-TF-024
1972
PHOTOINSPECTED 1980
DMA 2673 III SW-SERIES V861

U.S. Regional
Depository Copy
DO NOT DISCARD

A.H. ROBINSON
MAP LIBRARY
DEC 04 1991

University of Wisconsin
Madison

1980
Copy
1-1