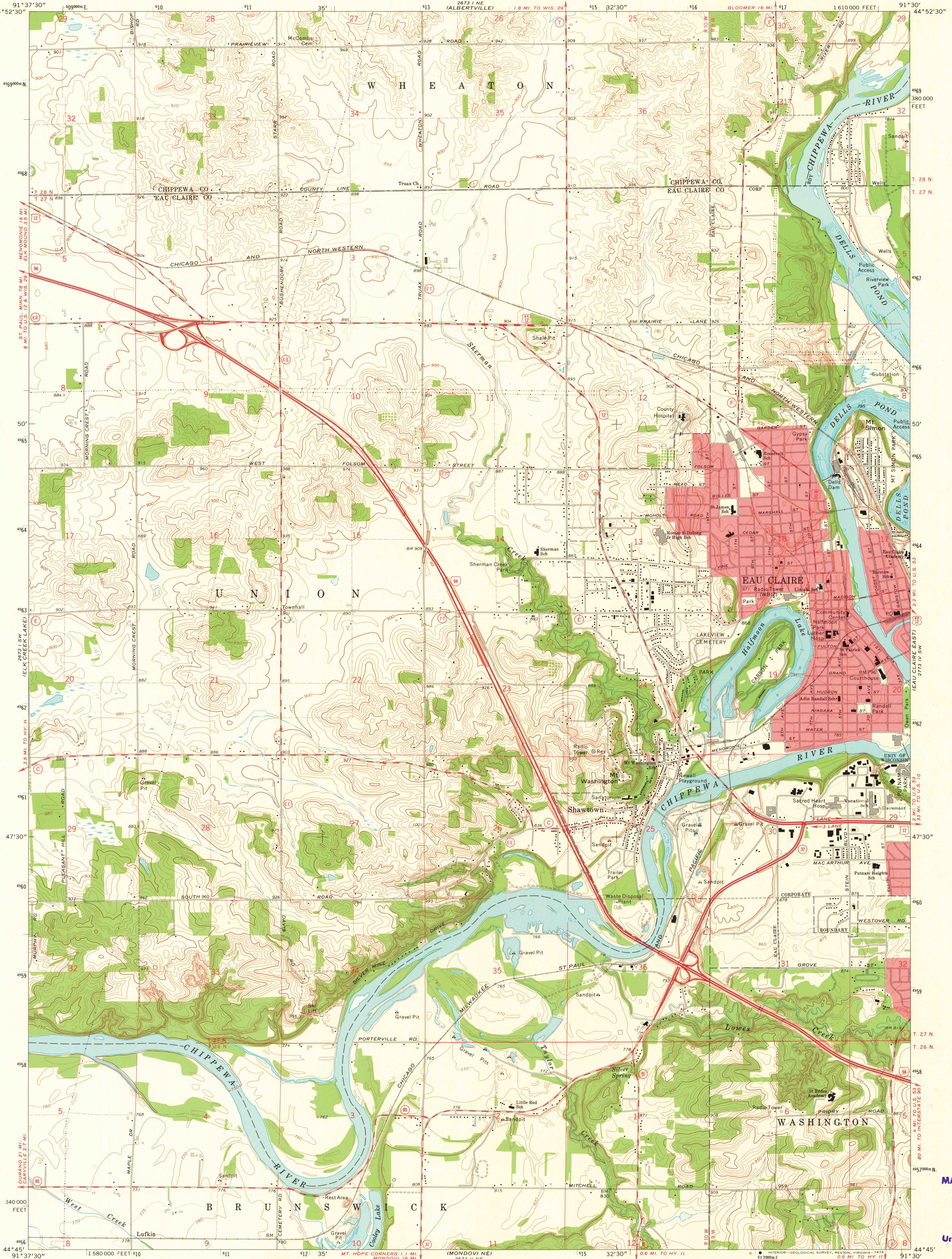


UNITED STATES
DEPARTMENT OF THE INTERIOR
GEOLOGICAL SURVEY

STATE OF WISCONSIN
STATE HIGHWAY COMMISSION
GEOLOGICAL AND NATURAL HISTORY SURVEY

EAU CLAIRE WEST QUADRANGLE
WISCONSIN
7.5 MINUTE SERIES (TOPOGRAPHIC)

273 N. W. (CHIPPEWA FALLS)



Maped, edited, and published by the Geological Survey in cooperation with the Wisconsin Highway Commission and Wisconsin Geological and Natural History Survey. Control by USGS and USC&GS.

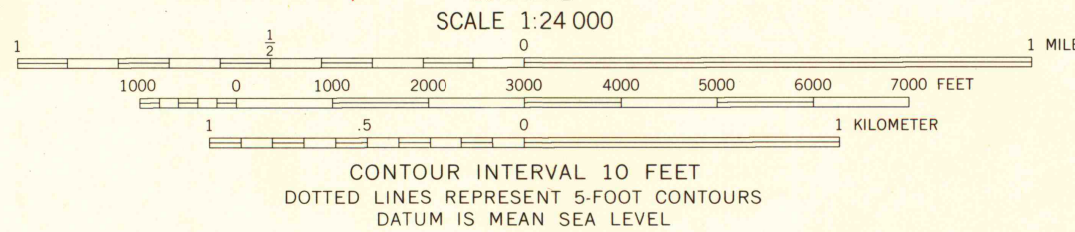
Topography by photogrammetric methods from aerial photographs taken 1972. Field checked 1972.

Hydrography compiled from information furnished by Wisconsin Department of Natural Resources.

Projection and 10,000-foot grid ticks: Wisconsin coordinate system, central zone (Lambert conformal conic) 1000-meter Universal Transverse Mercator grid ticks, zone 15, shown in blue. 1927 North American datum.

Red tint indicates areas in which only landmark buildings are shown.

Fine red dashed lines indicate selected fence and field lines where generally visible on aerial photographs. This information is unchecked.



ROAD CLASSIFICATION

Primary highway, hard surface	Light-duty road, hard or improved surface
Secondary highway, hard surface	Unimproved road
Interstate Route	U.S. Route
	State Route

EAU CLAIRE WEST, WIS.
SE/4 ELK MOUND 15' QUADRANGLE
N4445-W9130/7.5
1972
AMS 2673 1 SE-SERIES V961

MAP AND AIR PHOTO
LIBRARY

MAR 19 1975

University of Wisconsin

1972
copy
1-1