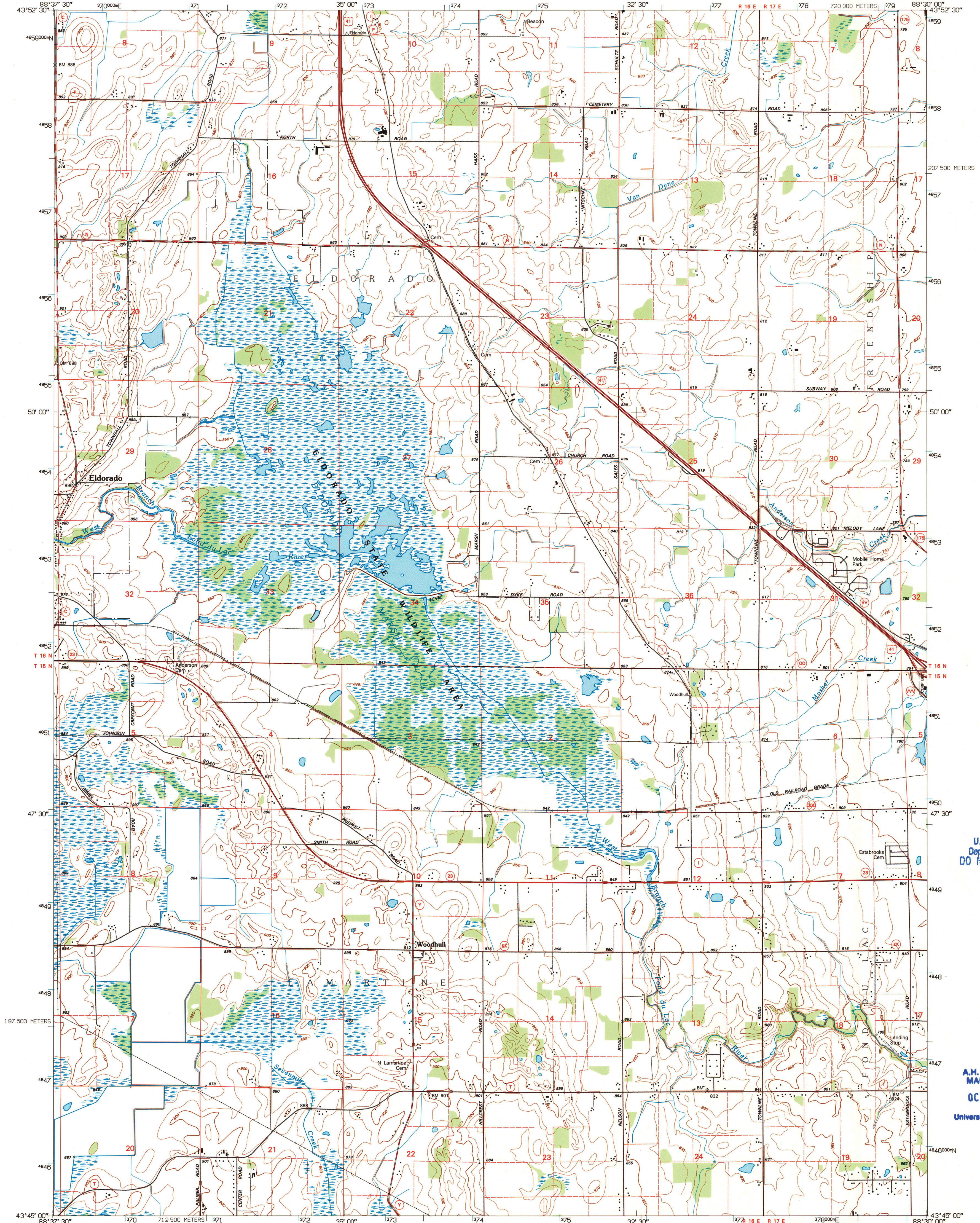


UNITED STATES
DEPARTMENT OF THE INTERIOR
GEOLOGICAL SURVEY

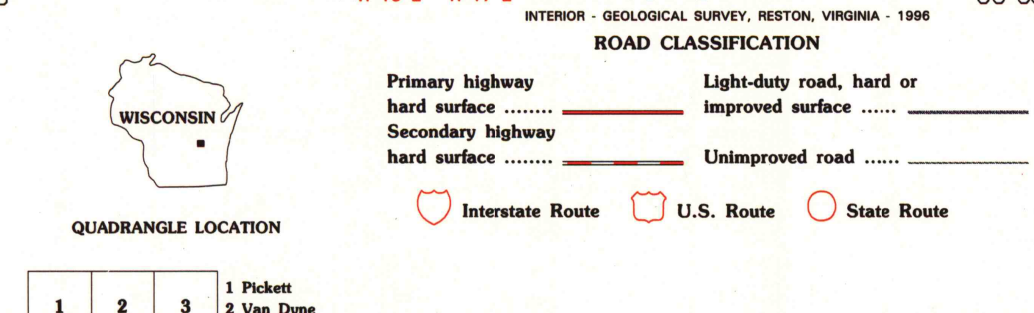
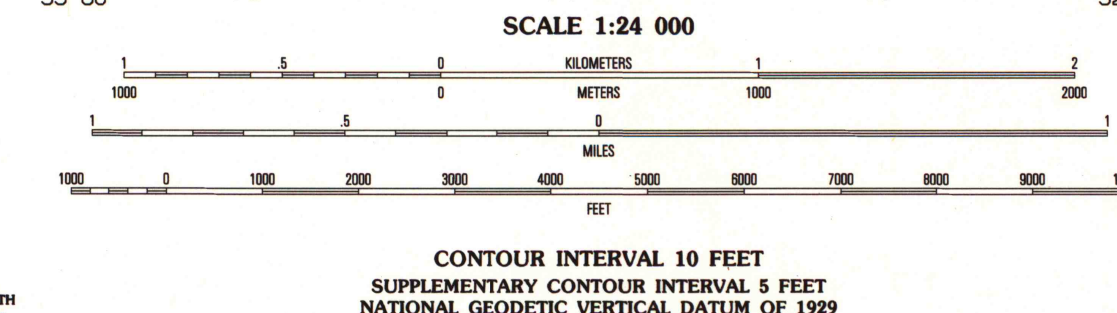
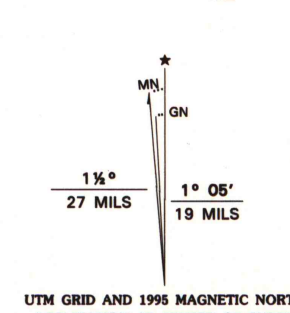
ELDORADO QUADRANGLE
WISCONSIN-FOND DU LAC CO.
7.5-MINUTE SERIES (TOPOGRAPHIC)



U.S. Regional
Depository Copy
DO NOT DISCARD

A.H. ROBINSON
MAP LIBRARY
OCT 9 1996
University of Wisconsin
Madison

Produced by the United States Geological Survey
Compiled from imagery dated 1976. Revised from imagery dated 1992. PLSS, survey control, contours, and elevations current as of 1976. Map edited 1995
North American Datum of 1983 (NAD 83). Projection and blue 1000-meter ticks: Universal Transverse Mercator, zone 16 2500-meter ticks: Wisconsin Coordinate System of 1983 (south zone) North American Datum of 1927 (NAD 27) is shown by dashed corner ticks. The values of the shift between NAD 83 and NAD 27 for 7.5-minute intersections are obtainable from National Geodetic Survey NADCON software
There may be private inholdings within the boundaries of the National or State reservations shown on this map



QUADRANGLE LOCATION		
1	2	3
4	5	6
7	8	9

1 Pickett	2 Van Dyne
3 Fahrney Point	4 Rosendale
5 Fond du Lac	6 Waspsun North
7 Oakfield	8 Byron

ELDORADO, WI
43088-G5-TF-024
1992
DMA 3271 1 SE-SERIES V861

1995
copy
1-1