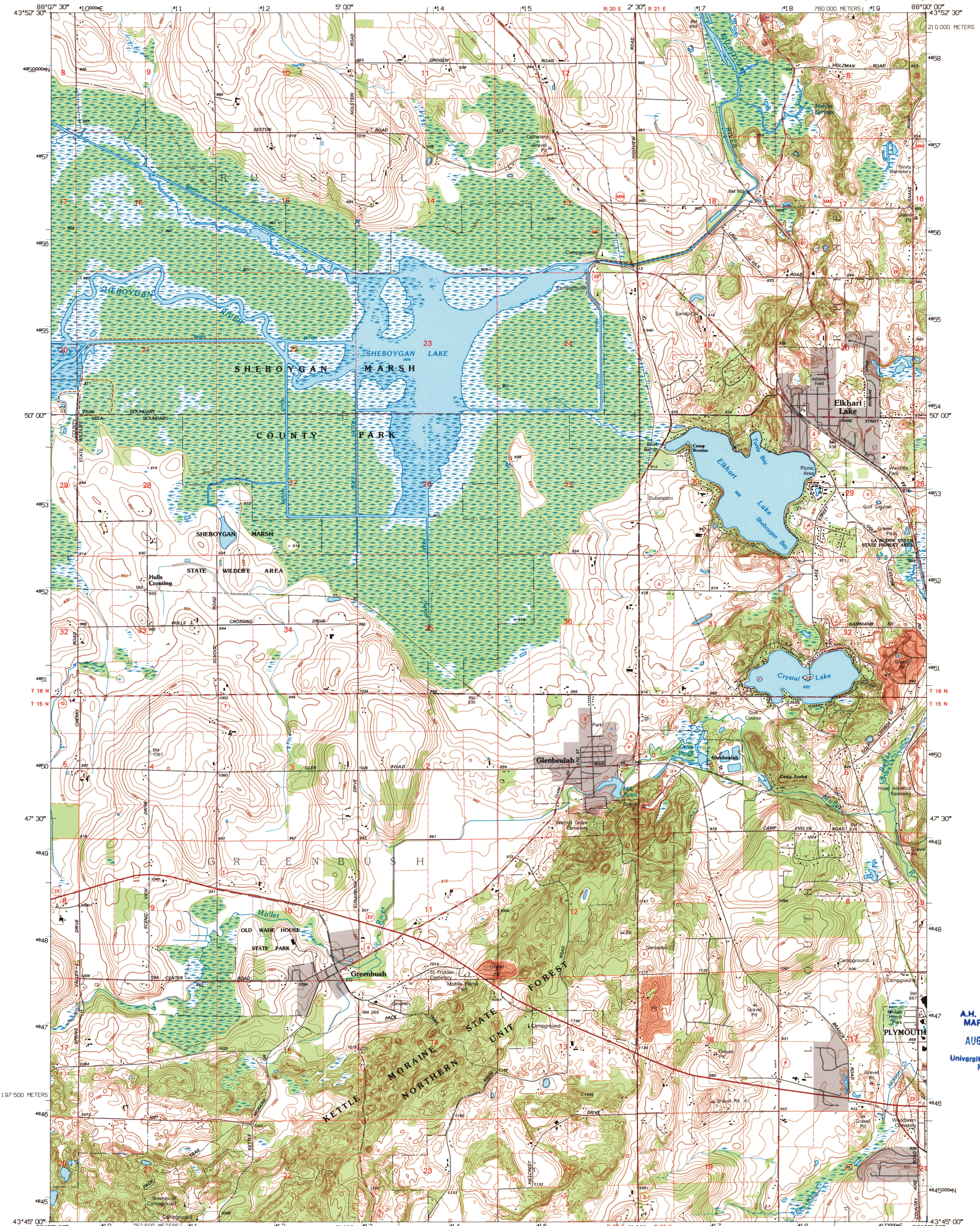


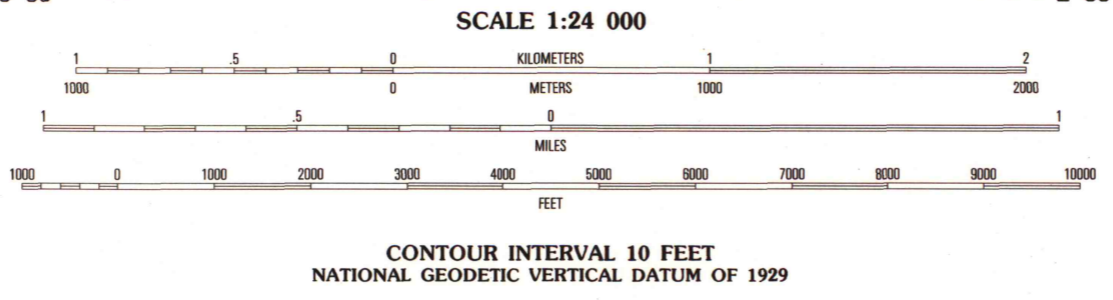
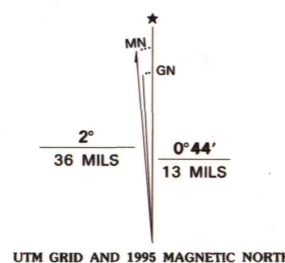
UNITED STATES  
DEPARTMENT OF THE INTERIOR  
GEOLOGICAL SURVEY

ELKHART LAKE QUADRANGLE  
WISCONSIN-SHEBOYGAN CO.  
7.5-MINUTE SERIES (TOPOGRAPHIC)

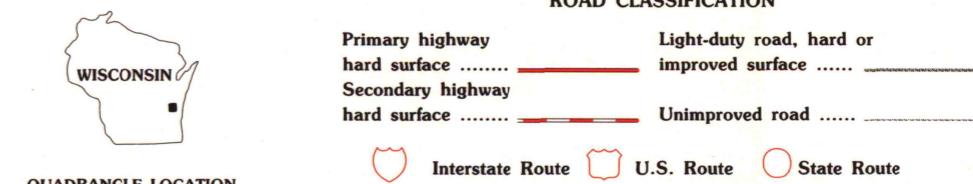


A.H. ROBINSON  
MAP LIBRARY  
AUG 14 1996  
University of Wisconsin  
Madison

Produced by the United States Geological Survey  
Compiled from imagery dated 1973. Revised from imagery dated 1992. PLSS and survey control current as of 1974. Contours and elevations current as of 1973. Map edited 1995. North American Datum of 1983 (NAD 83). Projection and blue 1000-meter ticks: Universal Transverse Mercator, zone 16. 2500-meter ticks: Wisconsin Coordinate System of 1983 (south zone). North American Datum of 1927 (NAD 27) is shown by dashed corner ticks. The values of the shift between NAD 83 and NAD 27 for 7.5-minute intersections are obtainable from National Geodetic Survey NADCON software. There may be private inholdings within the boundaries of the National or State reservations shown on this map.



CONTOUR INTERVAL 10 FEET  
NATIONAL GEODETIC VERTICAL DATUM OF 1929



QUADRANGLE LOCATION

1	2	3
4	5	6
7	8	

U.S. Regional Depository COPY DO NOT DISCARD  
ELKHART LAKE, WI  
43088-G1-TF-024  
1992  
DMA 3371 I SE-SERIES V881

THIS MAP COMPLIES WITH NATIONAL MAP ACCURACY STANDARDS FOR SALE BY U.S. GEOLOGICAL SURVEY, DENVER, COLORADO 80225, OR RESTON, VIRGINIA 22092 AND WISCONSIN GEOLOGICAL AND NATURAL HISTORY SURVEY, MADISON, WISCONSIN 53706. A FOLDER DESCRIBING TOPOGRAPHIC MAPS AND SYMBOLS IS AVAILABLE ON REQUEST.

1995 copy 1-1  
1-740

