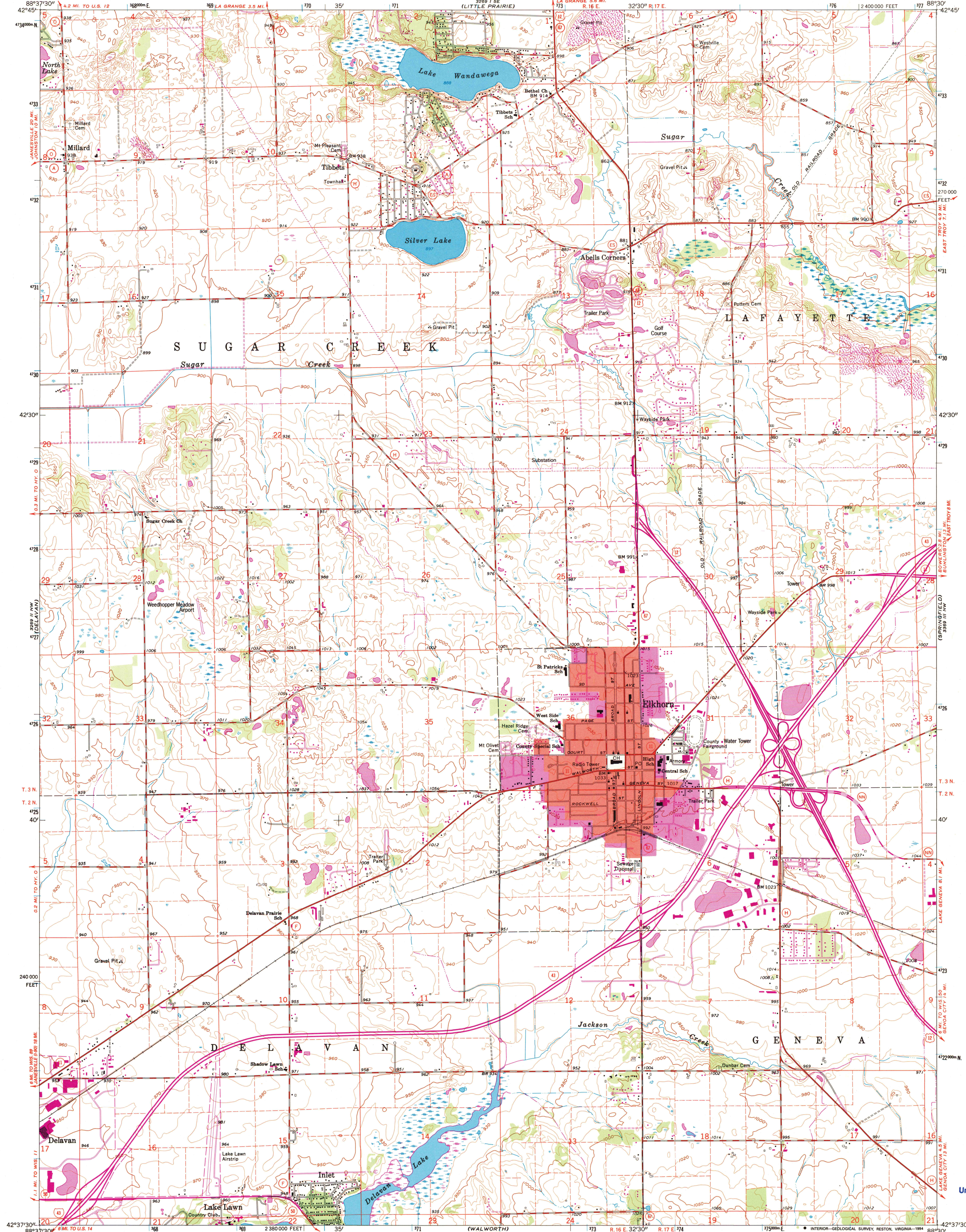


UNITED STATES
DEPARTMENT OF THE INTERIOR
GEOLOGICAL SURVEY

ELKHORN QUADRANGLE
WISCONSIN—WALWORTH CO.
7.5 MINUTE SERIES (TOPOGRAPHIC)
NE/4 DELAVAN 15' QUADRANGLE



Produced by the United States Geological Survey

Control by USGS and NOS/NOAA

Topography by photogrammetric methods from aerial photographs taken 1955. Field checked 1960

Projection and 10,000-foot grid ticks: Wisconsin coordinate system, south zone (Lambert conformal conic)

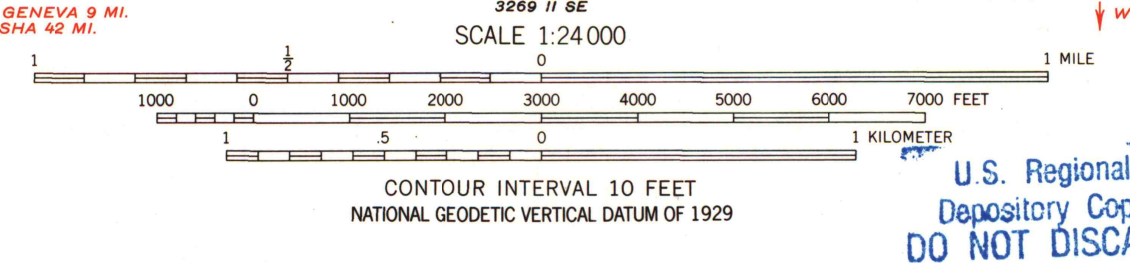
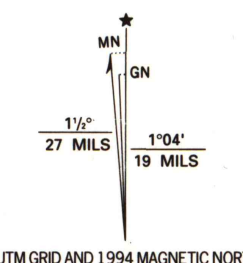
1000-meter Universal Transverse Mercator grid ticks, zone 16, shown in blue 1927 North American Datum (NAD 27)

North American Datum of 1983 (NAD 83) is shown by dashed corner ticks

The values of the shift between NAD 27 and NAD 83 for 7.5-minute intersections are given in USGS Bulletin 1875

Red tint indicates area in which only landmark buildings are shown

Fine red dashed lines indicate selected fence and field lines where generally visible on aerial photographs. This information is unchecked



ROAD CLASSIFICATION	
Primary highway, hard surface	Light-duty road, hard or improved surface
Secondary highway, hard surface	Unimproved road
Interstate Route	U. S. Route
	State Route

FOR SALE BY U.S. GEOLOGICAL SURVEY, DENVER, COLORADO 80225, OR RESTON, VIRGINIA 22092
AND WISCONSIN GEOLOGICAL AND NATURAL HISTORY SURVEY, MADISON, WISCONSIN 53706
A FOLDER DESCRIBING TOPOGRAPHIC MAPS AND SYMBOLS IS AVAILABLE ON REQUEST

Revisions shown in purple compiled in cooperation with State of Wisconsin agencies from aerial photographs taken 1992 and other sources. This information not field checked. Map edited 1994
Information shown in purple may not meet USGS content standards and may conflict with previously mapped contours
Purple tint indicates extension of urban areas

A.H. ROBINSON
MAP LIBRARY
DEC 19 1994
University of Wisconsin
Madison

1994
copy
1-1