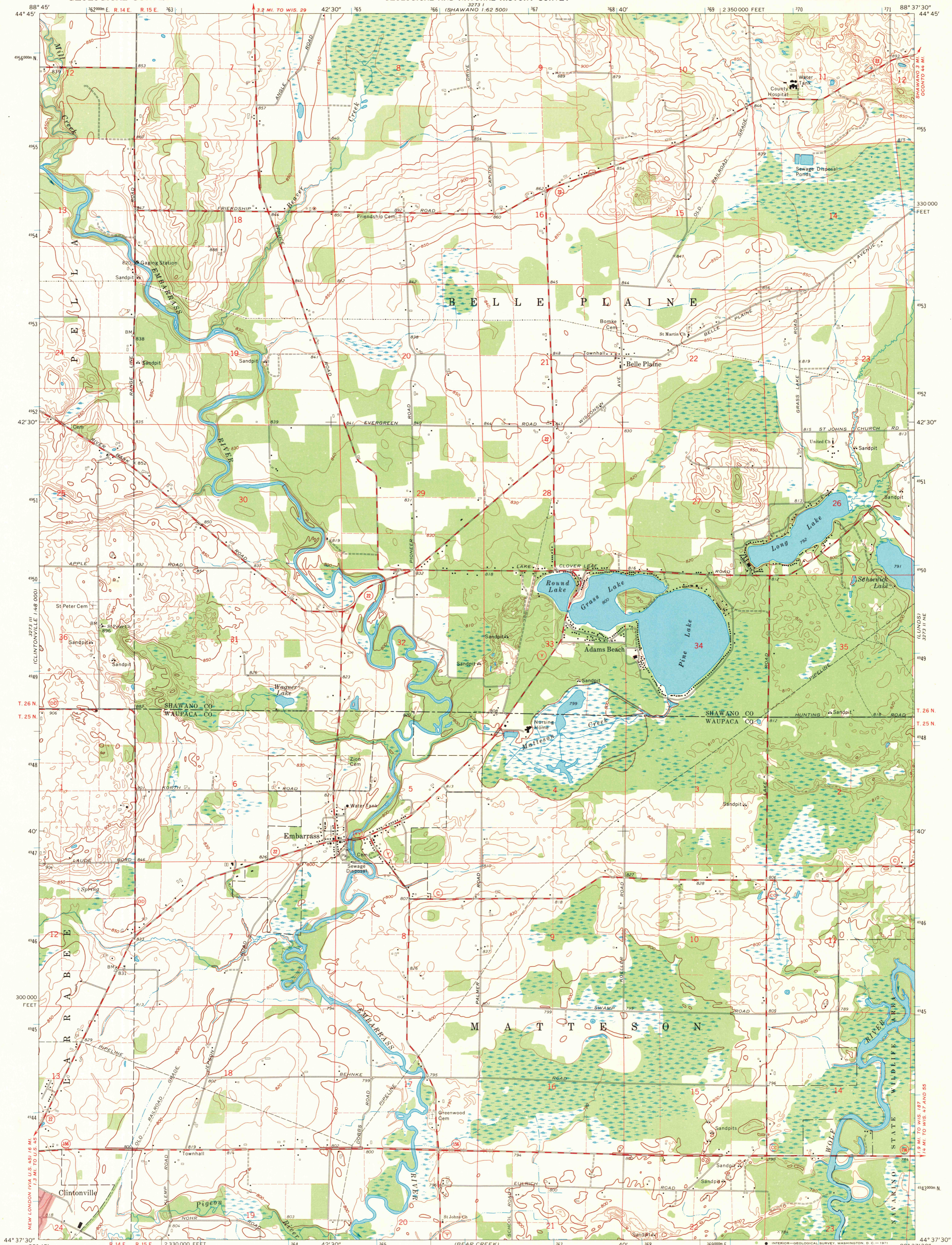
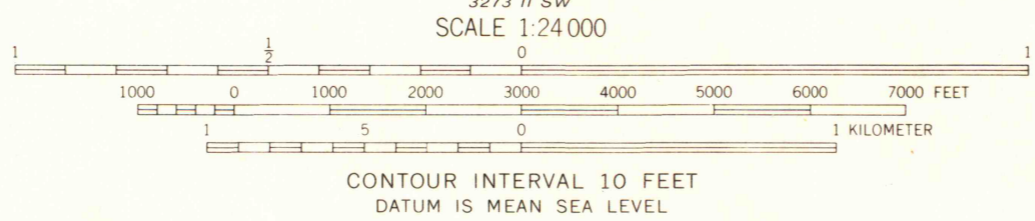
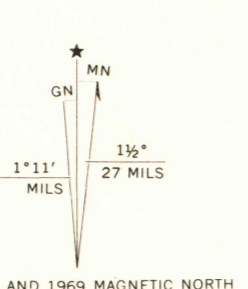


3271 1/2 500  
SHAWANO 152 500



Mapped, edited, and published by the Geological Survey in cooperation with the Wisconsin Highway Commission and Wisconsin Geological and Natural History Survey  
Control by USGS and USC&GS  
Topography by photogrammetric methods from aerial photographs taken 1968. Field checked 1969  
Polyconic projection. 1927 North American datum  
10,000-foot grid based on Wisconsin coordinate system, central zone  
1000-meter Universal Transverse Mercator grid ticks, zone 16, shown in blue  
Red tint indicates area in which only landmark buildings are shown  
Fine red dashed lines indicate selected fence and field lines where generally visible on aerial photographs. This information is unchecked



ROAD CLASSIFICATION  
Secondary highway, all weather, Light-duty road, all weather, improved surface  
Unimproved road, fair or dry weather  
State Route



003-1971

EMBARRASS, WIS.  
NW 1/4 EMBARRASS 15' QUADRANGLE  
N4437.5-W8837.5/7.5

THIS MAP COMPLIES WITH NATIONAL MAP ACCURACY STANDARDS  
FOR SALE BY U.S. GEOLOGICAL SURVEY, WASHINGTON, D.C. 20242  
AND BY THE WISCONSIN GEOLOGICAL AND NATURAL HISTORY SURVEY, MADISON, WISCONSIN 53706  
A FOLDER DESCRIBING TOPOGRAPHIC MAPS AND SYMBOLS IS AVAILABLE ON REQUEST

University of Wisconsin

1969  
AMS 3273 1/2 NW-SERIES W861

1969 copy 1-1