

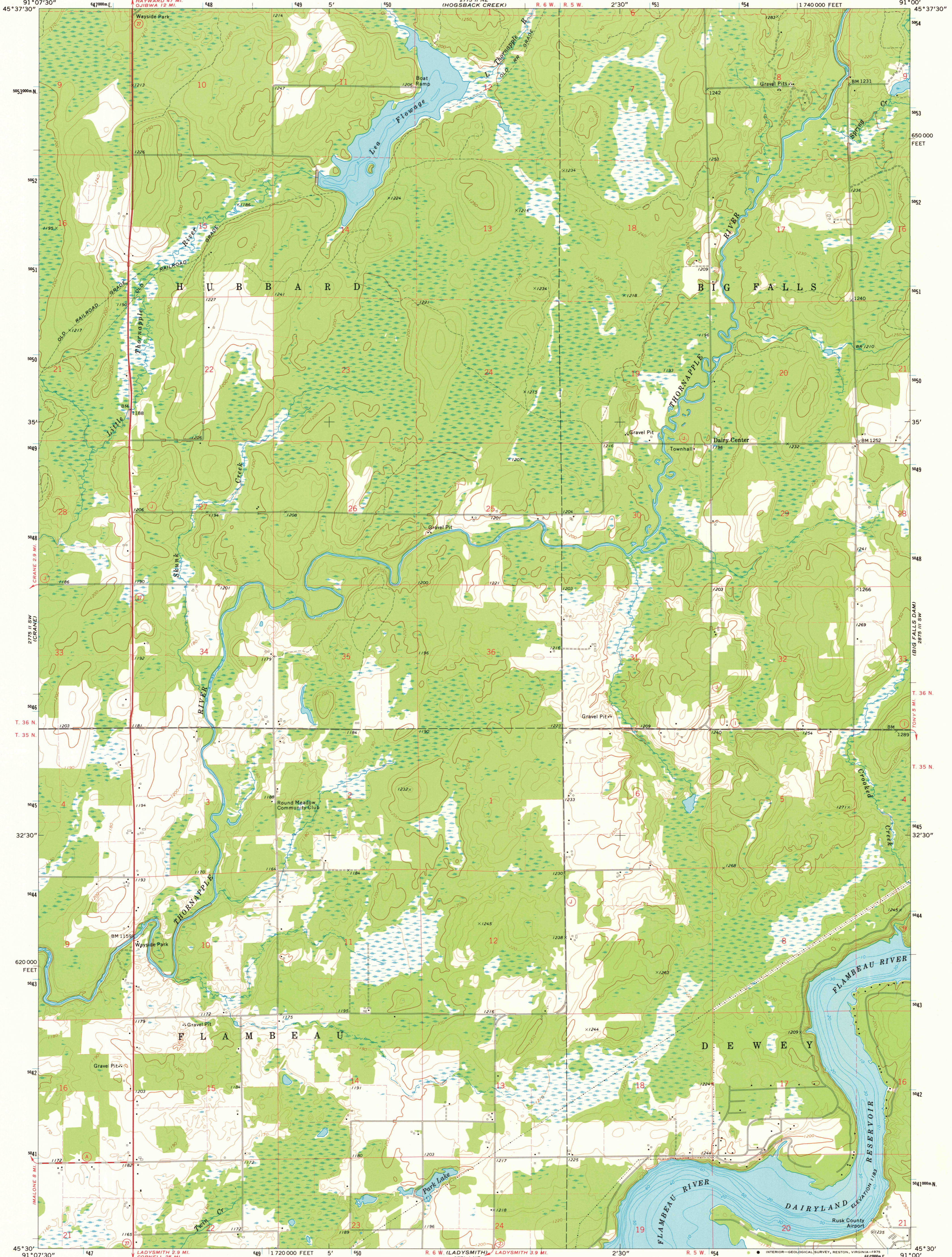
2775 II SW
(EVELAND)

UNITED STATES
DEPARTMENT OF THE INTERIOR
GEOLOGICAL SURVEY

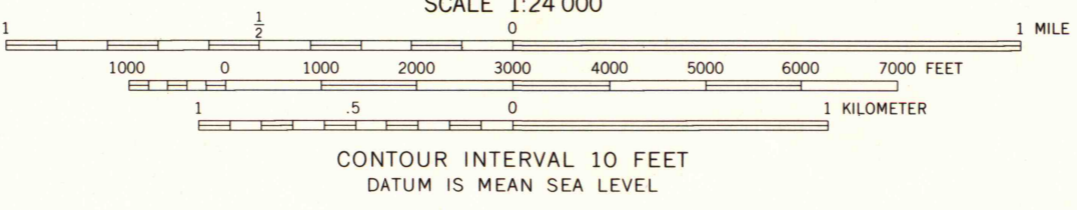
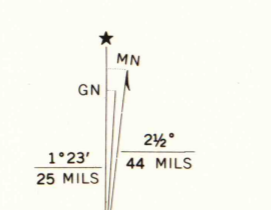
STATE OF WISCONSIN
STATE HIGHWAY COMMISSION
GEOLOGICAL AND NATURAL HISTORY SURVEY

EXELAND SE QUADRANGLE
WISCONSIN—RUSK CO.
7.5 MINUTE SERIES (TOPOGRAPHIC)

2775 II NW
(HOGBACK NW)



Mapped, edited, and published by the Geological Survey in cooperation with Wisconsin Highway Commission and Wisconsin Geological and Natural History Survey Control by USGS and USC&GS
Topography by photogrammetric methods from aerial photographs taken 1971. Field checked 1972
Projection and 10,000-foot grid ticks: Wisconsin coordinate system, central zone (Lambert conformal conic) 1000-meter Universal Transverse Mercator grid ticks, zone 15, shown in blue. 1927 North American datum
Depth curves compiled from charts furnished by Wisconsin Department of Natural History
Fine red dashed lines indicate selected fence and field lines where generally visible on aerial photographs. This information is unchecked



ROAD CLASSIFICATION
Primary highway, hard surface
Secondary highway, hard surface
Light duty road, hard or improved surface
Unimproved road
Interstate Route U.S. Route State Route

THIS MAP COMPLIES WITH NATIONAL MAP ACCURACY STANDARDS FOR SALE BY U. S. GEOLOGICAL SURVEY, RESTON, VIRGINIA 22092 AND BY THE WISCONSIN GEOLOGICAL AND NATURAL HISTORY SURVEY, MADISON, WISCONSIN 53706 A FOLDER DESCRIBING TOPOGRAPHIC MAPS AND SYMBOLS IS AVAILABLE ON REQUEST

EXELAND SE, WIS.
SE 1/4 EXELAND 15' QUADRANGLE
N4530-W9100/7.5
1972
AMS 2775 II SE—SERIES V861

MAP AND AIR PHOTO LIBRARY
FEB 20 1975
University of Wisconsin

1972
copy
1-1