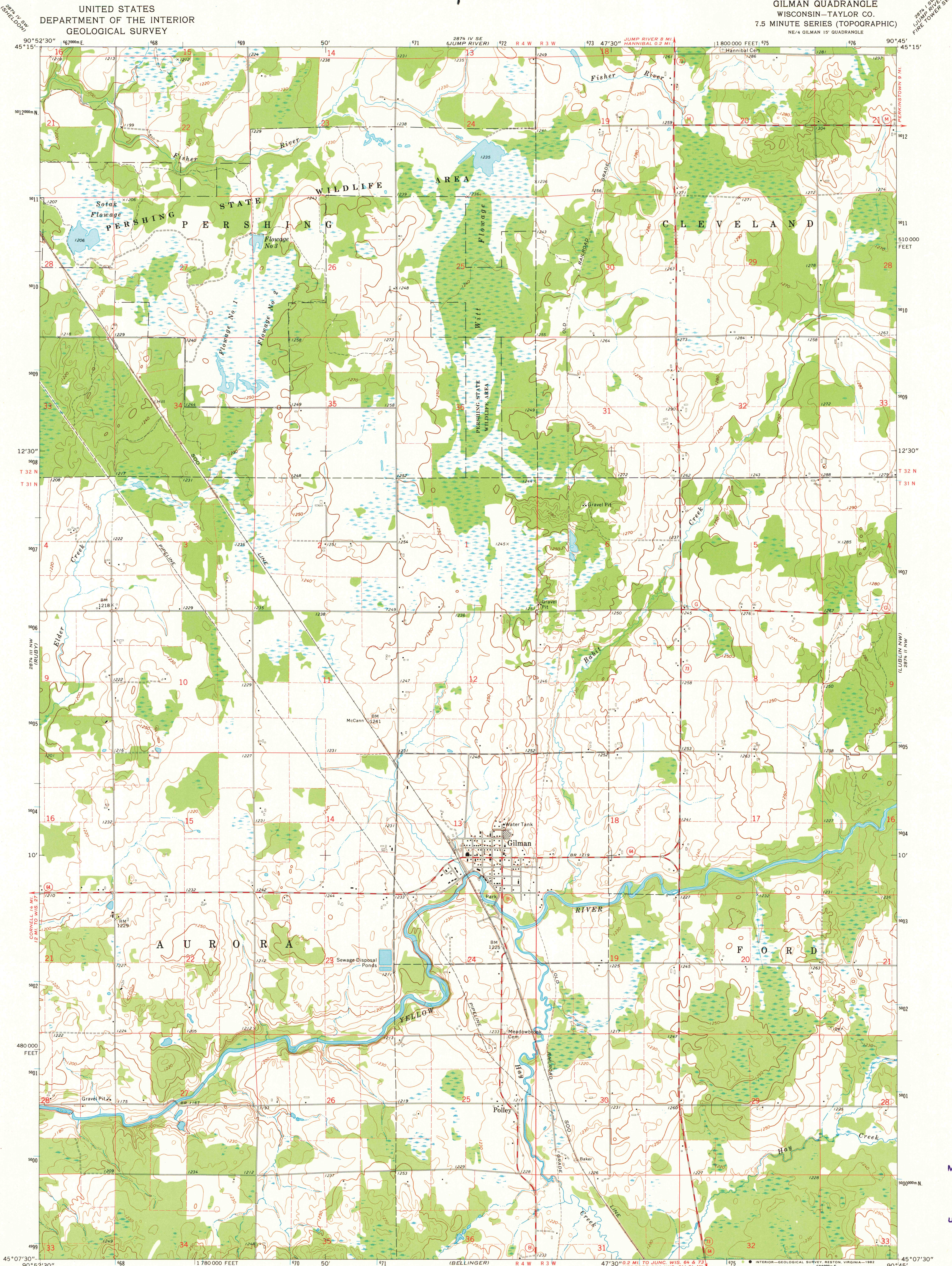


UNITED STATES
DEPARTMENT OF THE INTERIOR
GEOLOGICAL SURVEY

GILMAN QUADRANGLE
WISCONSIN-TAYLOR CO.
7.5 MINUTE SERIES (TOPOGRAPHIC)
NE 4 GILMAN 15' QUADRANGLE



Mapped, edited, and published by the Geological Survey

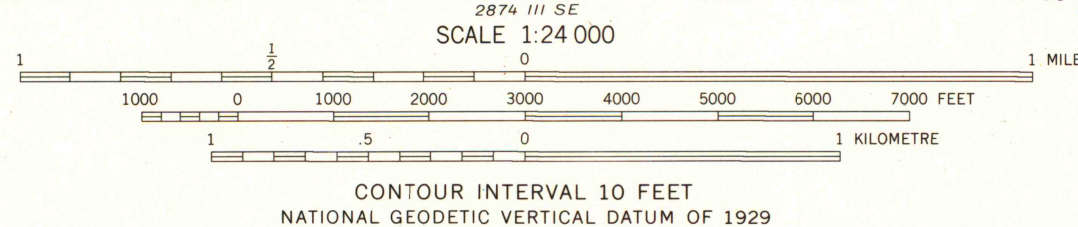
Control by USGS and NOS/NOAA

Topography by photogrammetric methods from aerial photographs taken 1973. Field checked 1973

Projection and 10,000-foot grid ticks: Wisconsin coordinate system, central zone (Lambert conformal conic) 1000-metre Universal Transverse Mercator grid ticks, zone 15, shown in blue. 1927 North American datum To place on the predicted North American Datum 1983 move the projection lines 6 meters north and 12 meters east as shown by dashed corner ticks

There may be private inholdings within the boundaries of the National or State reservations shown on this map

Map photoinspected 1981
No major culture or drainage changes observed



THIS MAP COMPLIES WITH NATIONAL MAP ACCURACY STANDARDS
FOR SALE BY U. S. GEOLOGICAL SURVEY, RESTON, VIRGINIA 22092
AND WISCONSIN GEOLOGICAL AND NATURAL HISTORY SURVEY, MADISON, WISCONSIN 53706
A FOLDER DESCRIBING TOPOGRAPHIC MAPS AND SYMBOLS IS AVAILABLE ON REQUEST

ROAD CLASSIFICATION
Primary highway, hard or improved surface
Secondary highway, hard surface
Unimproved road
Interstate Route
U. S. Route
State Route



QUADRANGLE LOCATION

GILMAN, WIS.
NE 4 GILMAN 15' QUADRANGLE
N4507.5-W9045.7/7.5

1973
PHOTOINSPECTED 1981
AMS 2874 III NE-SERIES V861

MAP AND AIR PHOTO
LIBRARY

DEC 17 1982

University of Wisconsin
Madison

1981
COPY
1-1