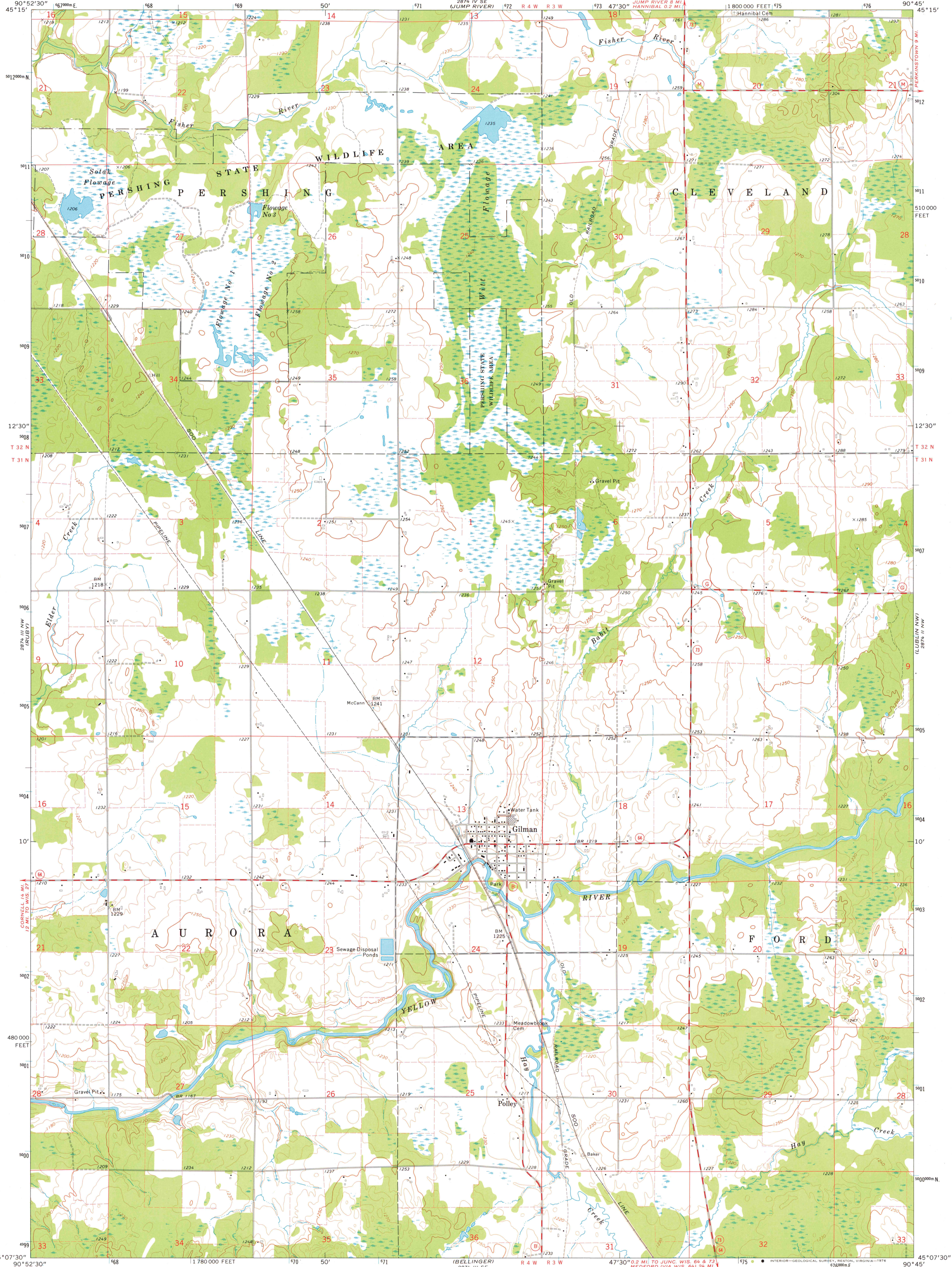
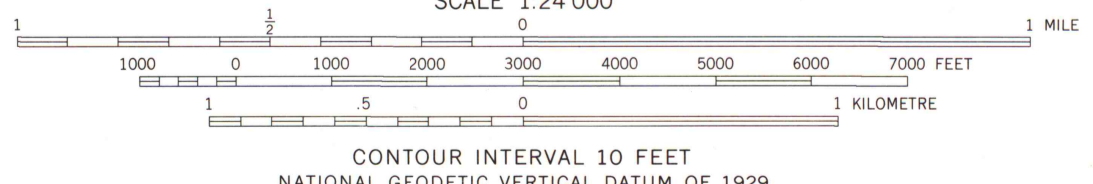
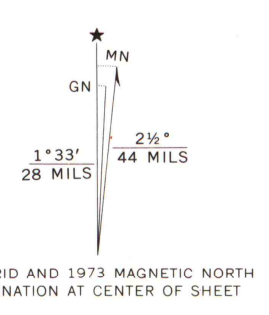


2874 IV SE  
(JUMP RIVER)  
2874 III NW  
(RUBY)  
2874 II NW  
(LUBLIN NW)  
2874 I NW  
(LUBLIN NW)  
2874 I SW  
(LUBLIN SW)  
2874 II SW  
(LUBLIN SW)  
2874 III SW  
(RUBY)  
2874 IV SW  
(JUMP RIVER)



MAP AND AIR PHOTO  
LIBRARY  
MAY 25 1977  
University of Wisconsin  
Madison

Mapped, edited, and published by the Geological Survey  
Control by USGS and NOS/NOAA  
Topography by photogrammetric methods from aerial  
photographs taken 1973. Field checked 1973  
Projection and 10,000-foot grid ticks: Wisconsin coordinate  
system, central zone (Lambert conformal conic)  
1000-metre Universal Transverse Mercator grid ticks,  
zone 15, shown in blue. 1927 North American datum  
Fine red dashed lines indicate selected fence and field lines where  
generally visible on aerial photographs  
This information is unchecked



ROAD CLASSIFICATION

Primary highway, hard surface	Light-duty road, hard or improved surface
Secondary highway, hard surface	Unimproved road
Interstate Route	U. S. Route
	State Route

THIS MAP COMPLIES WITH NATIONAL MAP ACCURACY STANDARDS  
FOR SALE BY U. S. GEOLOGICAL SURVEY, RESTON, VIRGINIA 22092  
AND BY THE WISCONSIN GEOLOGICAL AND NATURAL HISTORY SURVEY, MADISON, WISCONSIN 53706  
A FOLDER DESCRIBING TOPOGRAPHIC MAPS AND SYMBOLS IS AVAILABLE ON REQUEST

GILMAN, WIS.  
NE 1/4 GILMAN 15' QUADRANGLE  
N4507.5—W9045.7/7.5

1973  
AMS 2874 III NE—SERIES V861

1973  
COPY  
1-1