

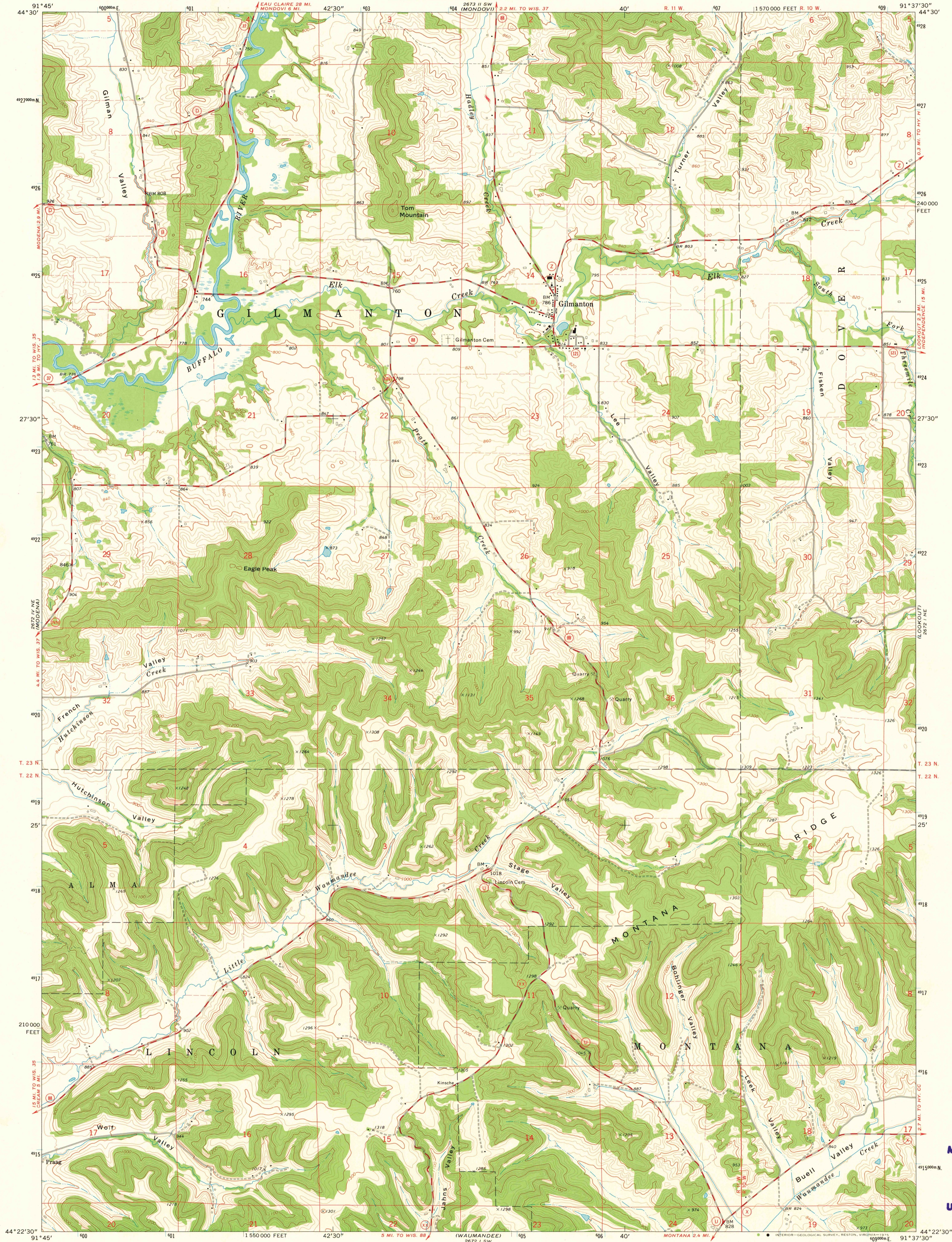
2672 II SE
(TARRANT)

UNITED STATES
DEPARTMENT OF THE INTERIOR
GEOLOGICAL SURVEY

STATE OF WISCONSIN
DIVISION OF HIGHWAYS
GEOLOGICAL AND NATURAL HISTORY SURVEY

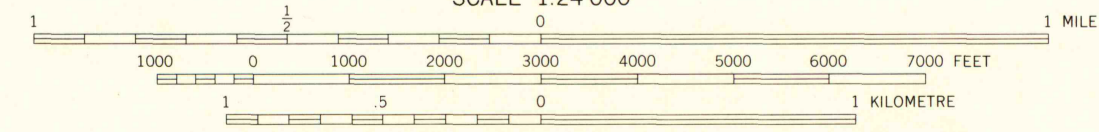
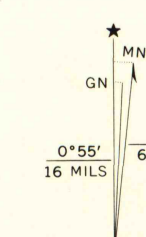
GILMANTON QUADRANGLE
WISCONSIN—BUFFALO CO.
7.5 MINUTE SERIES (TOPOGRAPHIC)
NW/4 GILMANTON 15' QUADRANGLE

2672 II SE
(ROSSMAN CREEK)



2672 IV SE
(CREAM)

Mapped, edited, and published by the Geological Survey in cooperation with the Wisconsin Division of Highways and Wisconsin Geological and Natural History Survey. Control by USGS and NOS/NOAA. Topography by photogrammetric methods from aerial photographs taken 1973. Field checked 1973. Projection and 10,000-foot grid ticks: Wisconsin coordinate system, central zone (Lambert conformal conic). 1000-metre Universal Transverse Mercator grid ticks, zone 15, shown in blue. 1927 North American datum. Fine red dashed lines indicate selected fence and field lines where generally visible on aerial photographs. This information is unchecked.



CONTOUR INTERVAL 20 FEET
NATIONAL GEODETIC VERTICAL DATUM OF 1929

THIS MAP COMPLIES WITH NATIONAL MAP ACCURACY STANDARDS FOR SALE BY U. S. GEOLOGICAL SURVEY, RESTON, VIRGINIA 22092 AND BY THE WISCONSIN GEOLOGICAL AND NATURAL HISTORY SURVEY, MADISON, WISCONSIN 53706 A FOLDER DESCRIBING TOPOGRAPHIC MAPS AND SYMBOLS IS AVAILABLE ON REQUEST



QUADRANGLE LOCATION

ROAD CLASSIFICATION

Primary highway, hard surface	Light-duty road, hard or improved surface
Secondary highway, hard surface	Unimproved road
Interstate Route	U. S. Route
	State Route

GILMANTON, WIS.
NW/4 GILMANTON 15' QUADRANGLE
N4422.5—W9137.5/7.5

1973

AMS 2672 I NW—SERIES V661

MAP AND AIR PHOTO LIBRARY

SEP 4 1975

University of Wisconsin

1973
COPY
1-1