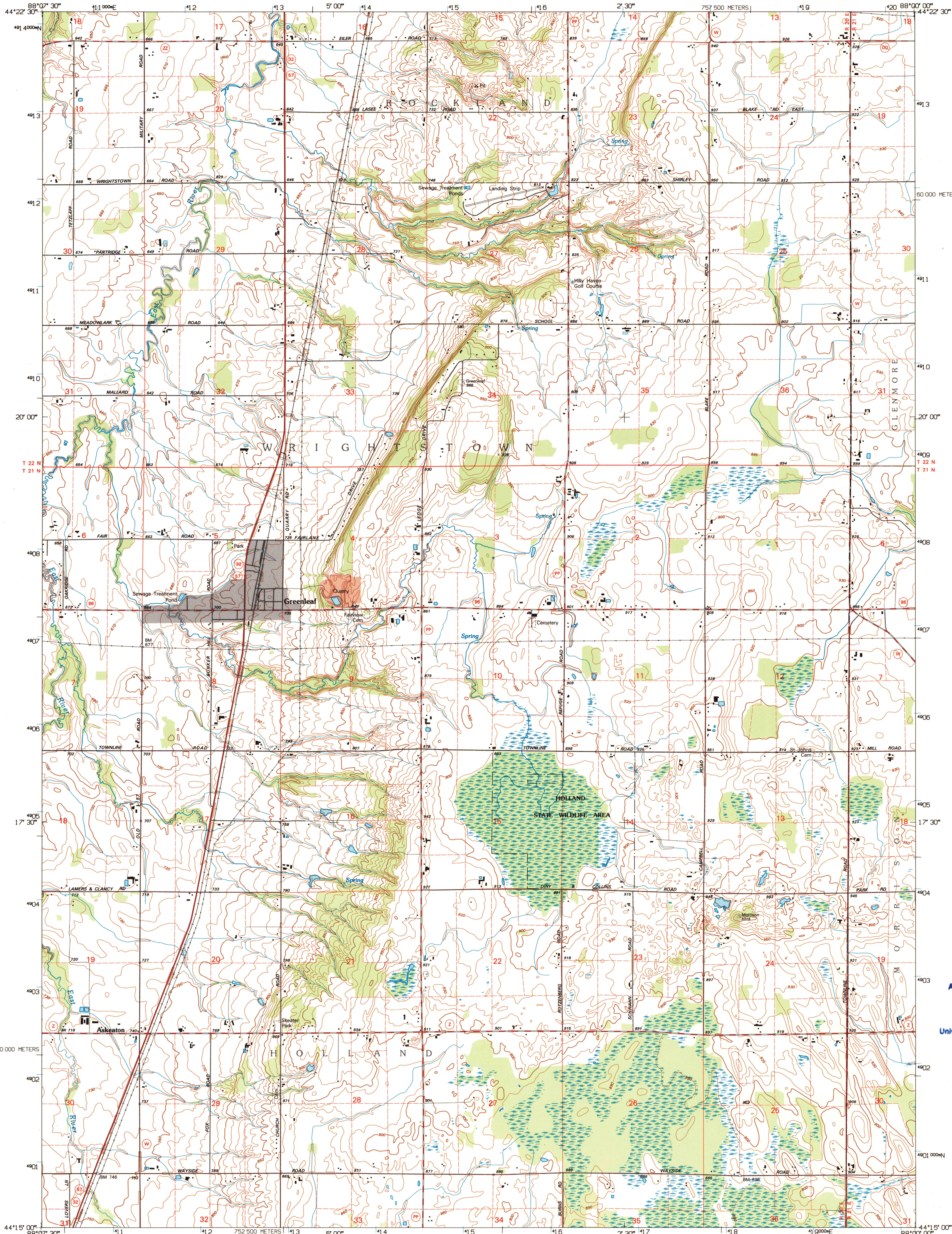


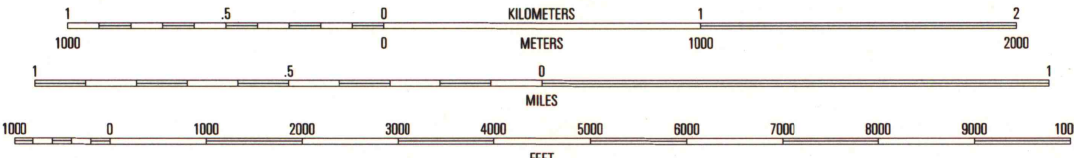
UNITED STATES
DEPARTMENT OF THE INTERIOR
GEOLOGICAL SURVEY

GREENLEAF QUADRANGLE
WISCONSIN-BROWN CO.
7.5-MINUTE SERIES (TOPOGRAPHIC)



Produced by the United States Geological Survey
Compiled from imagery dated 1973. Revised from imagery dated 1992. PLSS, survey control, contours, and elevations current as of 1974. Map edited 1995
North American Datum of 1983 (NAD 83). Projection and blue 1000-meter ticks: Universal Transverse Mercator, zone 16
2500-meter ticks: Wisconsin Coordinate System of 1983 (central zone)
North American Datum of 1927 (NAD 27) is shown by dashed corner ticks. The values of the shift between NAD 83 and NAD 27 for 7.5-minute intersections are obtainable from National Geodetic Survey NADCON software
There may be private inholdings within the boundaries of the National or State reservations shown on this map

UTM GRID AND 1983 MAGNETIC NORTH DECLINATION AT CENTER OF SHEET
2 1/2°
44° 45'
13 MILS



CONTOUR INTERVAL 10 FEET
SUPPLEMENTARY CONTOUR INTERVAL 5 FEET
NATIONAL GEODETIC DATUM OF 1929

THIS MAP COMPLIES WITH NATIONAL MAP ACCURACY STANDARDS
FOR SALE BY U.S. GEOLOGICAL SURVEY
DENVER, COLORADO 80225, OR RESTON, VIRGINIA 22092
AND WISCONSIN GEOLOGICAL AND NATURAL HISTORY SURVEY, MADISON, WISCONSIN 53706
A FOLDER DESCRIBING TOPOGRAPHIC MAPS AND SYMBOLS IS AVAILABLE ON REQUEST



QUADRANGLE LOCATION

1	2	3	1 Onida South
4	5	6	2 De Pere
7	8	9	3 Bellevue
			4 Wrightstown
			5 Morristown
			6 Hillert
			7 Brillant
			8 Reedsville

ROAD CLASSIFICATION
Primary highway
hard surface
Secondary highway
hard surface
Light-duty road, hard or
improved surface
Unimproved road

Interstate Route U.S. Route State Route

U.S. Regional
Depository Copy
DO NOT DISCARD

GREENLEAF, WI
44088-C1-TF-024

1992
DMA 3372 I SE-SERIES V861

A.H. ROBINSON
MAP LIBRARY
AUG 14 1996
University of Wisconsin
Madison

1995
copy
1-1

