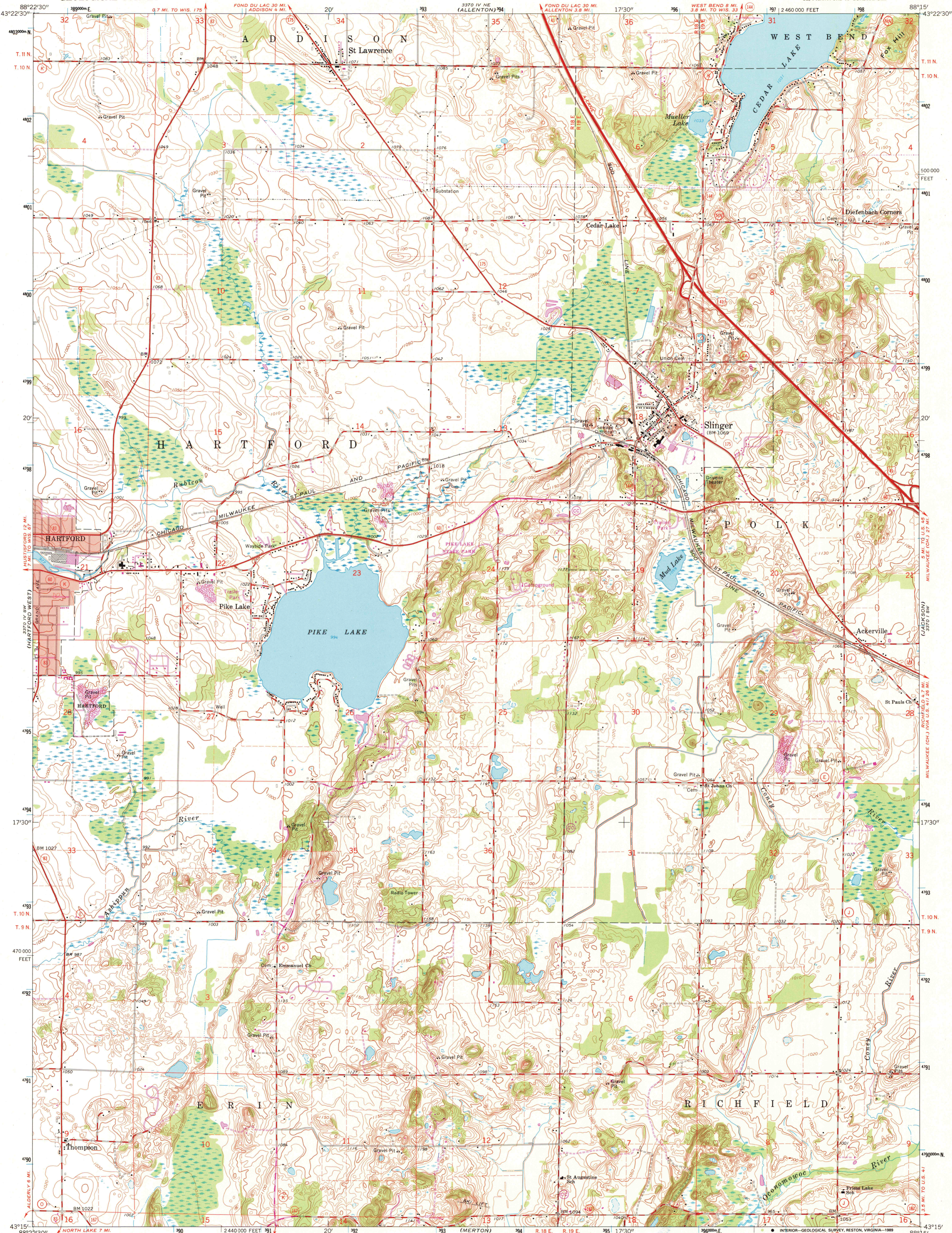


UNITED STATES
DEPARTMENT OF THE INTERIOR
GEOLOGICAL SURVEY

HARTFORD EAST QUADRANGLE
WISCONSIN-WASHINGTON CO.
7.5 MINUTE SERIES (TOPOGRAPHIC)
SE/4 HARTFORD 15' QUADRANGLE



Mapped, edited, and published by the Geological Survey

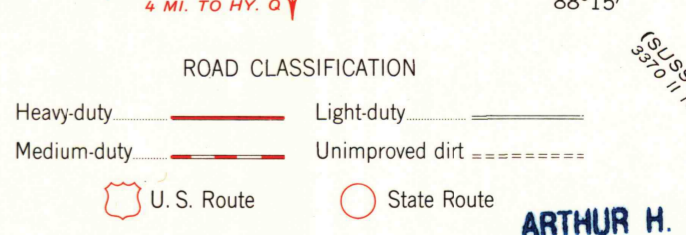
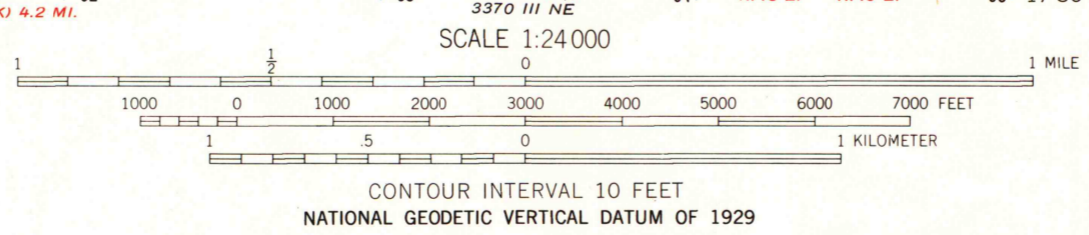
Control by USGS and USC&GS
Topography by photogrammetric methods from aerial photographs taken 1954-55. Field checked 1959

Polyconic projection. 1927 North American datum
10,000-foot grid based on Wisconsin coordinate system, south zone
1000-meter Universal Transverse Mercator grid ticks, zone 16, shown in blue

Red tint indicates areas in which only landmark buildings are shown
Fine red dashed lines indicate selected fence and field lines where
generally visible on aerial photographs. This information is unchecked

Revisions shown in purple compiled from aerial photographs
taken 1971. This information not field checked

Map photinspected 1976
No major culture or drainage changes observed



THIS MAP COMPLIES WITH NATIONAL MAP ACCURACY STANDARDS
FOR SALE BY U.S. GEOLOGICAL SURVEY, DENVER, COLORADO 80225, OR RESTON, VIRGINIA 22092
AND WISCONSIN GEOLOGICAL AND NATURAL HISTORY SURVEY, MADISON, WISCONSIN 53706
A FOLDER DESCRIBING TOPOGRAPHIC MAPS AND SYMBOLS IS AVAILABLE ON REQUEST

To place on the predicted North American Datum 1983,
move the projection lines 4 meters north and
7 meters east as shown by dashed corner ticks

HARTFORD EAST, WIS.
SE/4 HARTFORD 15' QUADRANGLE
43088-C3-TF-024
PHOTOINSPECTED 1976
PHOTOREVISED 1971
DMA 3370 IV SE-SERIES V861

ARTHUR H. ROBINSON MAP LIBRARY
University of Wisconsin-Madison

U.S. Regional
Depository Copy
DO NOT DISCARD

1976
copy
1-1

6/27/89