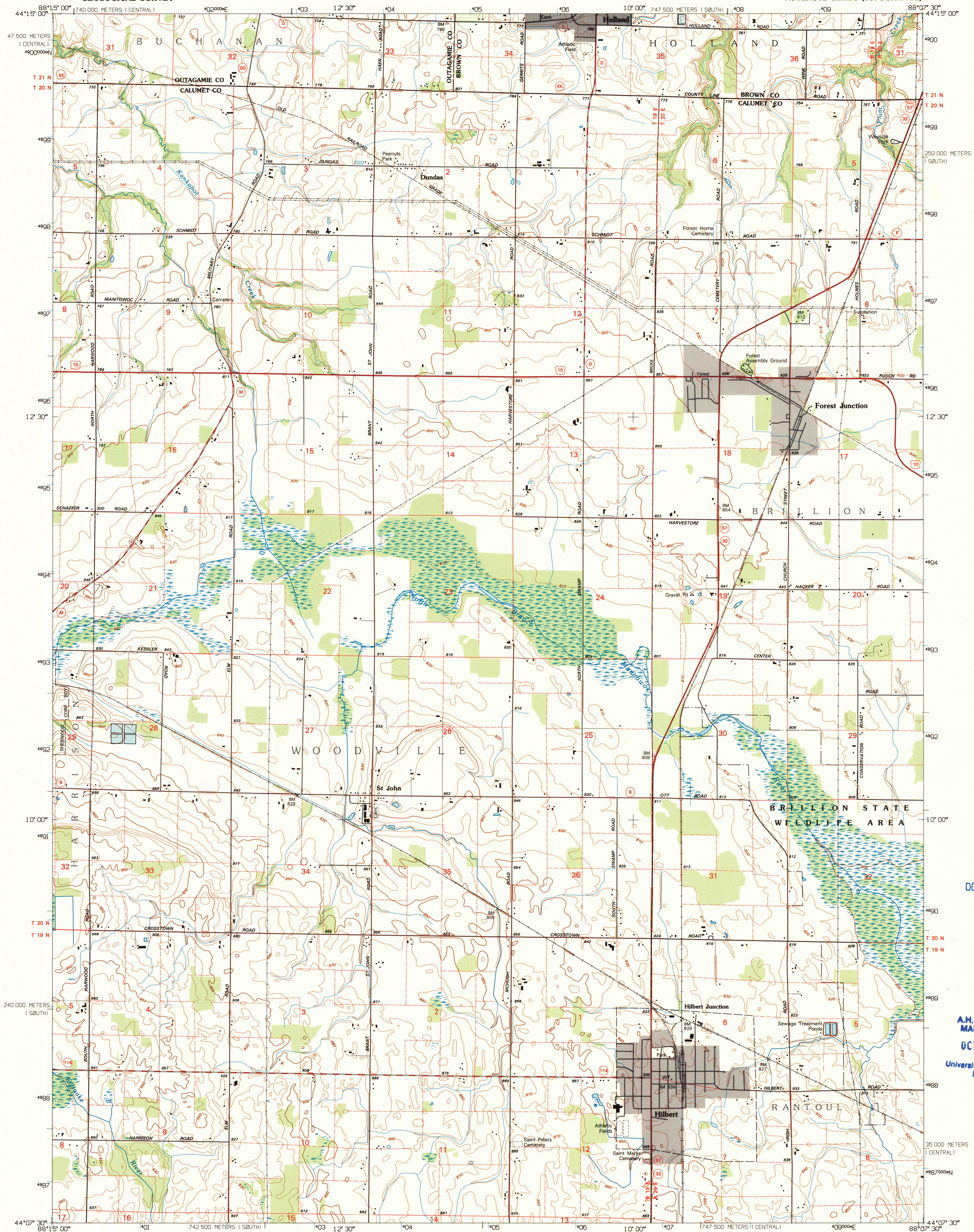
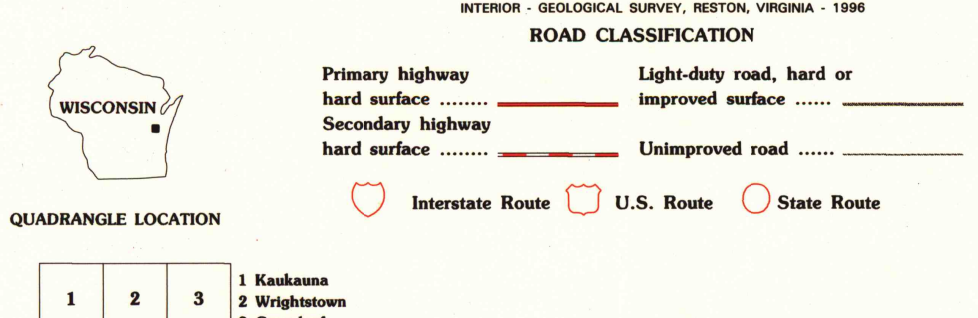
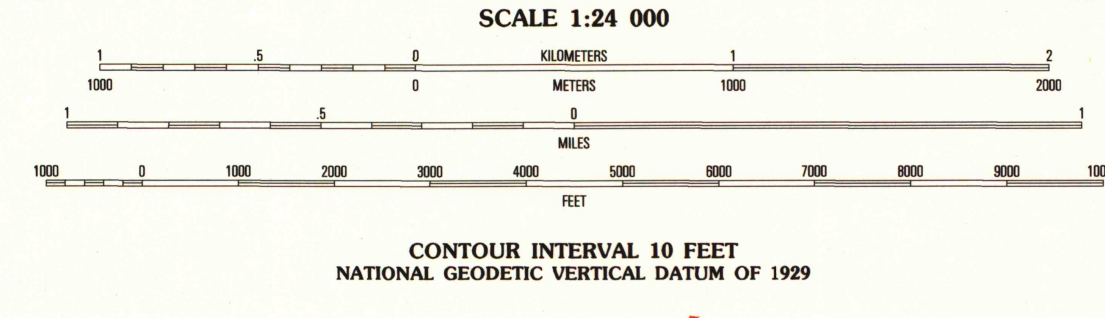
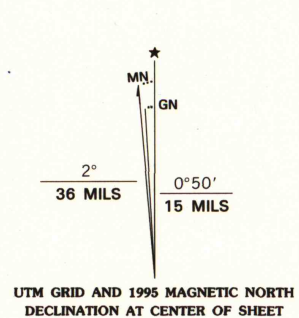


UNITED STATES
DEPARTMENT OF THE INTERIOR
GEOLOGICAL SURVEY

HILBERT QUADRANGLE
WISCONSIN
7.5-MINUTE SERIES (TOPOGRAPHIC)



Produced by the United States Geological Survey
Compiled from imagery dated 1973. Revised from imagery dated 1992. PLS and survey control current as of 1974. Contours and elevations current as of 1973. Map edited 1995.
North American Datum of 1983 (NAD 83). Projection and blue 1000-meter ticks: Universal Transverse Mercator, zone 16. 2500-meter ticks: Wisconsin Coordinate System of 1983 (south and central zones).
North American Datum of 1927 (NAD 27) is shown by dashed corner ticks. The values of the shift between NAD 83 and NAD 27 for 7.5-minute intersections are obtainable from National Geodetic Survey NADCON software.
There may be private inholdings within the boundaries of the National or State reservations shown on this map.



1	2	3
4	5	6
7	8	9

QUADRANGLE LOCATION

ADJOINING 7.5' QUADRANGLE NAMES

1	2	3
4	5	6
7	8	9

1 Kankum
2 Wrightstown
3 Greenfield
4 Sherwood
5 Brillion
6 Stockbridge
7 Chilton
8 Potter

CONTOUR INTERVAL 10 FEET
NATIONAL GEODETIC VERTICAL DATUM OF 1929

THIS MAP COMPLEYS WITH NATIONAL MAP ACCURACY STANDARDS
FOR SALE BY U.S. GEOLOGICAL SURVEY, DENVER, COLORADO 80225, OR RESTON, VIRGINIA 22092
AND WISCONSIN GEOLOGICAL AND NATURAL HISTORY SURVEY, MADISON, WISCONSIN 53706
A FOLDER DESCRIBING TOPOGRAPHIC MAPS AND SYMBOLS IS AVAILABLE ON REQUEST

U.S. Regional
Depository Copy
DO NOT DISCARD

A.H. ROBINSON
MAP LIBRARY
OCT - 9 1996
University of Wisconsin
Madison

1995
copy
1-1

