

UNITED STATES  
DEPARTMENT OF THE INTERIOR  
GEOLOGICAL SURVEY

STATE OF WISCONSIN  
DIVISION OF HIGHWAYS  
GEOLOGICAL AND NATURAL HISTORY SURVEY

HILBERT QUADRANGLE  
WISCONSIN  
7.5 MINUTE SERIES (TOPOGRAPHIC)

NW/4 CHILTON 15' QUADRANGLE

3372 15' E  
(GREENLEAF)

3372 15' E  
(GREENLEAF)

820 000 FEET  
(SOUTH)  
T 20 N

820 000 FEET  
(SOUTH)  
T 20 N

820 000 FEET  
(SOUTH)  
T 20 N

820 000 FEET  
(SOUTH)  
T 20 N

820 000 FEET  
(SOUTH)  
T 20 N

820 000 FEET  
(SOUTH)  
T 20 N

820 000 FEET  
(SOUTH)  
T 20 N

820 000 FEET  
(SOUTH)  
T 20 N

820 000 FEET  
(SOUTH)  
T 20 N

820 000 FEET  
(SOUTH)  
T 20 N

820 000 FEET  
(SOUTH)  
T 20 N

820 000 FEET  
(SOUTH)  
T 20 N

820 000 FEET  
(SOUTH)  
T 20 N

820 000 FEET  
(SOUTH)  
T 20 N

820 000 FEET  
(SOUTH)  
T 20 N

820 000 FEET  
(SOUTH)  
T 20 N

820 000 FEET  
(SOUTH)  
T 20 N

820 000 FEET  
(SOUTH)  
T 20 N

820 000 FEET  
(SOUTH)  
T 20 N

820 000 FEET  
(SOUTH)  
T 20 N

820 000 FEET  
(SOUTH)  
T 20 N

820 000 FEET  
(SOUTH)  
T 20 N

820 000 FEET  
(SOUTH)  
T 20 N

820 000 FEET  
(SOUTH)  
T 20 N

820 000 FEET  
(SOUTH)  
T 20 N

820 000 FEET  
(SOUTH)  
T 20 N

820 000 FEET  
(SOUTH)  
T 20 N

820 000 FEET  
(SOUTH)  
T 20 N

820 000 FEET  
(SOUTH)  
T 20 N

820 000 FEET  
(SOUTH)  
T 20 N

820 000 FEET  
(SOUTH)  
T 20 N

820 000 FEET  
(SOUTH)  
T 20 N

820 000 FEET  
(SOUTH)  
T 20 N

820 000 FEET  
(SOUTH)  
T 20 N

820 000 FEET  
(SOUTH)  
T 20 N

820 000 FEET  
(SOUTH)  
T 20 N

820 000 FEET  
(SOUTH)  
T 20 N

820 000 FEET  
(SOUTH)  
T 20 N

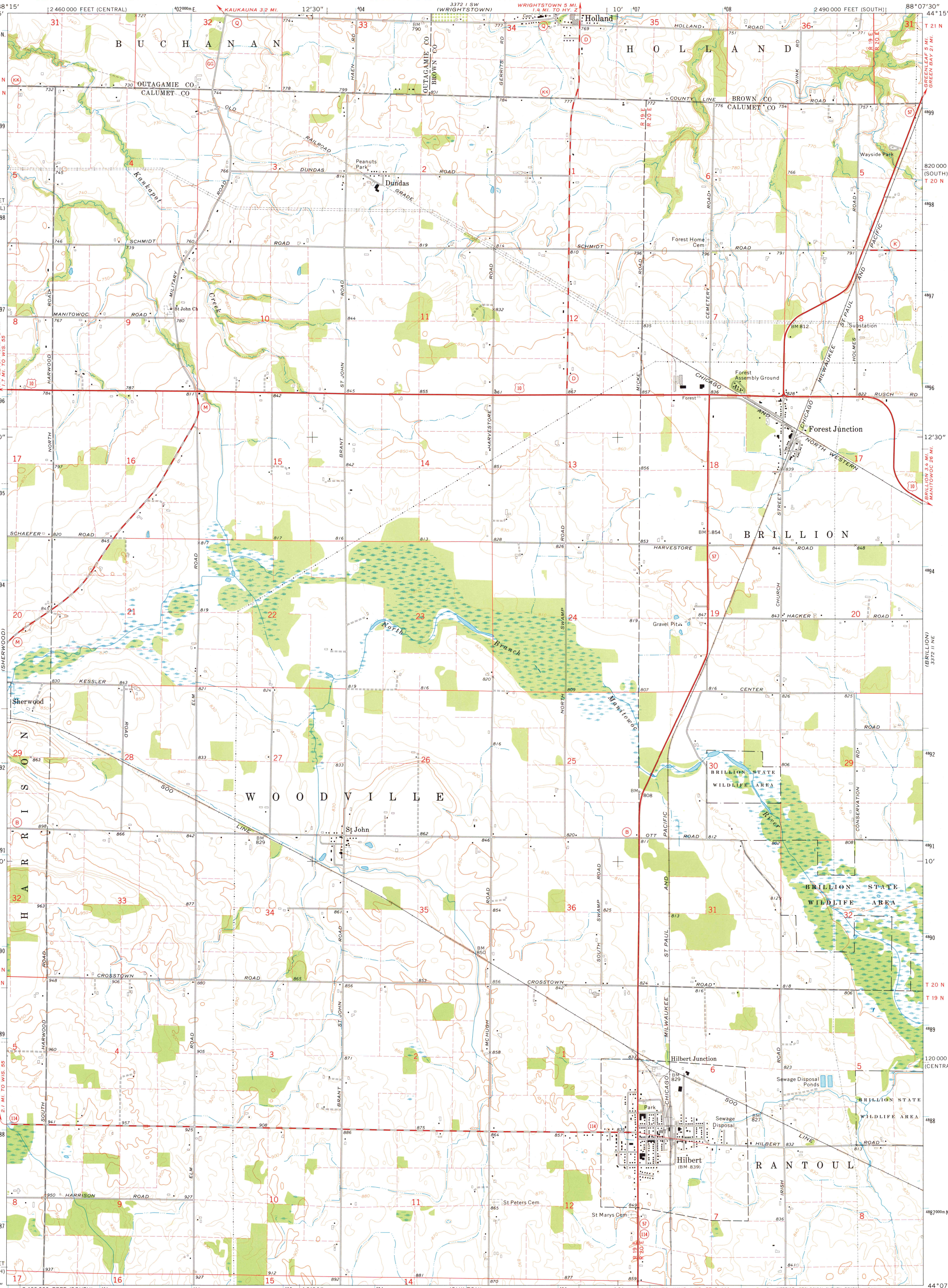
820 000 FEET  
(SOUTH)  
T 20 N

820 000 FEET  
(SOUTH)  
T 20 N

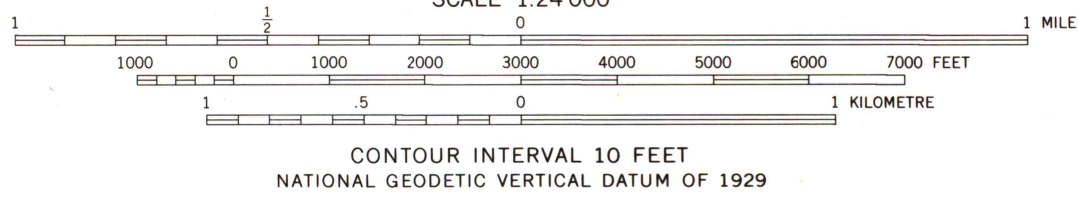
820 000 FEET  
(SOUTH)  
T 20 N

820 000 FEET  
(SOUTH)  
T 20 N

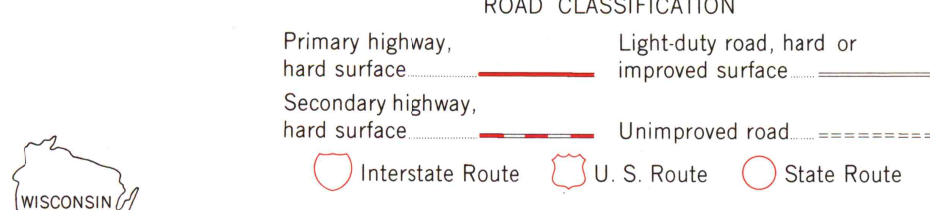
820 000 FEET  
(SOUTH)  
T 20 N



Mapped, edited, and published by the Geological Survey  
in cooperation with the Wisconsin Division of Highways  
and Wisconsin Geological and Natural History Survey  
Control by USGS and NOS/NOAA  
Topography by photogrammetric methods from aerial  
photographs taken 1973. Field checked 1974  
Projection: Wisconsin coordinate system, south zone  
(Lambert conformal conic)  
10,000-foot grid ticks based on Wisconsin coordinate  
system, south and central zones  
1000-metre Universal Transverse Mercator grid ticks,  
zone 16, shown in blue. 1927 North American datum  
Fine red dashed lines indicate selected fence and field lines where  
generally visible on aerial photographs. This information is unchecked



THIS MAP COMPLIES WITH NATIONAL MAP ACCURACY STANDARDS  
FOR SALE BY U.S. GEOLOGICAL SURVEY, RESTON, VIRGINIA 22092  
AND WISCONSIN GEOLOGICAL AND NATURAL HISTORY SURVEY, MADISON, WISCONSIN 53706  
A FOLDER DESCRIBING TOPOGRAPHIC MAPS AND SYMBOLS IS AVAILABLE ON REQUEST



HILBERT, WIS.  
NW/4 CHILTON 15' QUADRANGLE  
N4407.5—W8807.5/7.5  
1974  
AMS 3372 11 NW—SERIES V861

MAP AND AIR PHOTO  
LIBRARY  
AUG 26 1977  
University of Wisconsin  
Madison

1974  
copy  
1-1