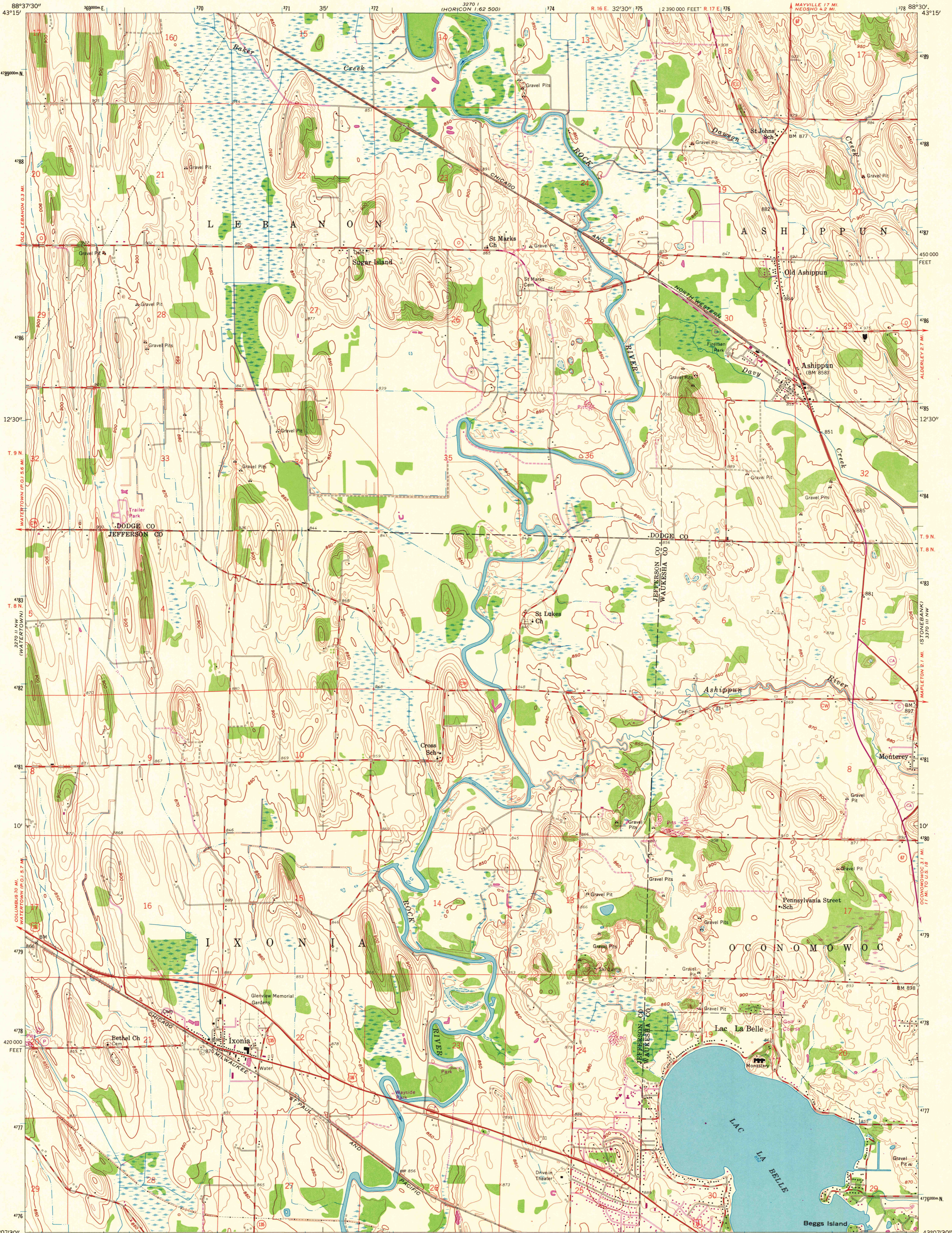


UNITED STATES
DEPARTMENT OF THE INTERIOR
GEOLOGICAL SURVEY

IXONIA QUADRANGLE
WISCONSIN
7.5 MINUTE SERIES (TOPOGRAPHIC)



Mapped, edited, and published by the Geological Survey

Control by USGS and USC&GS

Topography from aerial photographs by photogrammetric methods

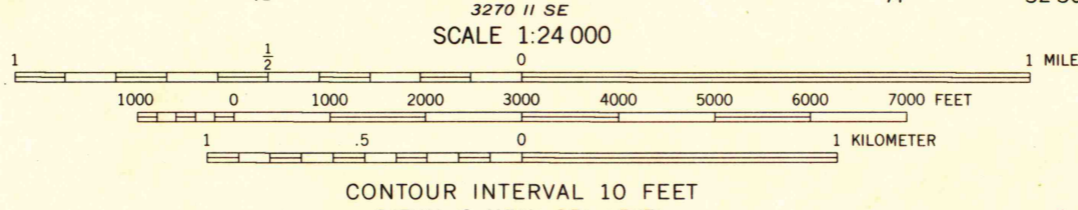
Aerial photographs taken 1954-1955. Field check 1959

Polyconic projection. 1927 North American datum

10,000-foot grid based on Wisconsin coordinate system, south zone

1000-meter Universal Transverse Mercator grid ticks, zone 16, shown in blue

Revisions shown in purple compiled from aerial photographs taken 1971. This information not field checked



CONTOUR INTERVAL 10 FEET
DATUM IS MEAN SEA LEVEL

ROAD CLASSIFICATION

Heavy-duty	Light-duty
Medium-duty	Unimproved dirt
U.S. Route	State Route



IXONIA, WIS.
NE 1/4 WATERTOWN 15' QUADRANGLE
N 4307.5-W 8830/7.5

1959
PHOTOREVISED 1971
AMS 3270 II NE-SERIES V861

MAP AND AIR PHOTO
LIBRARY
AUG 17 1972
University of Wisconsin

1971
Copy
1-1