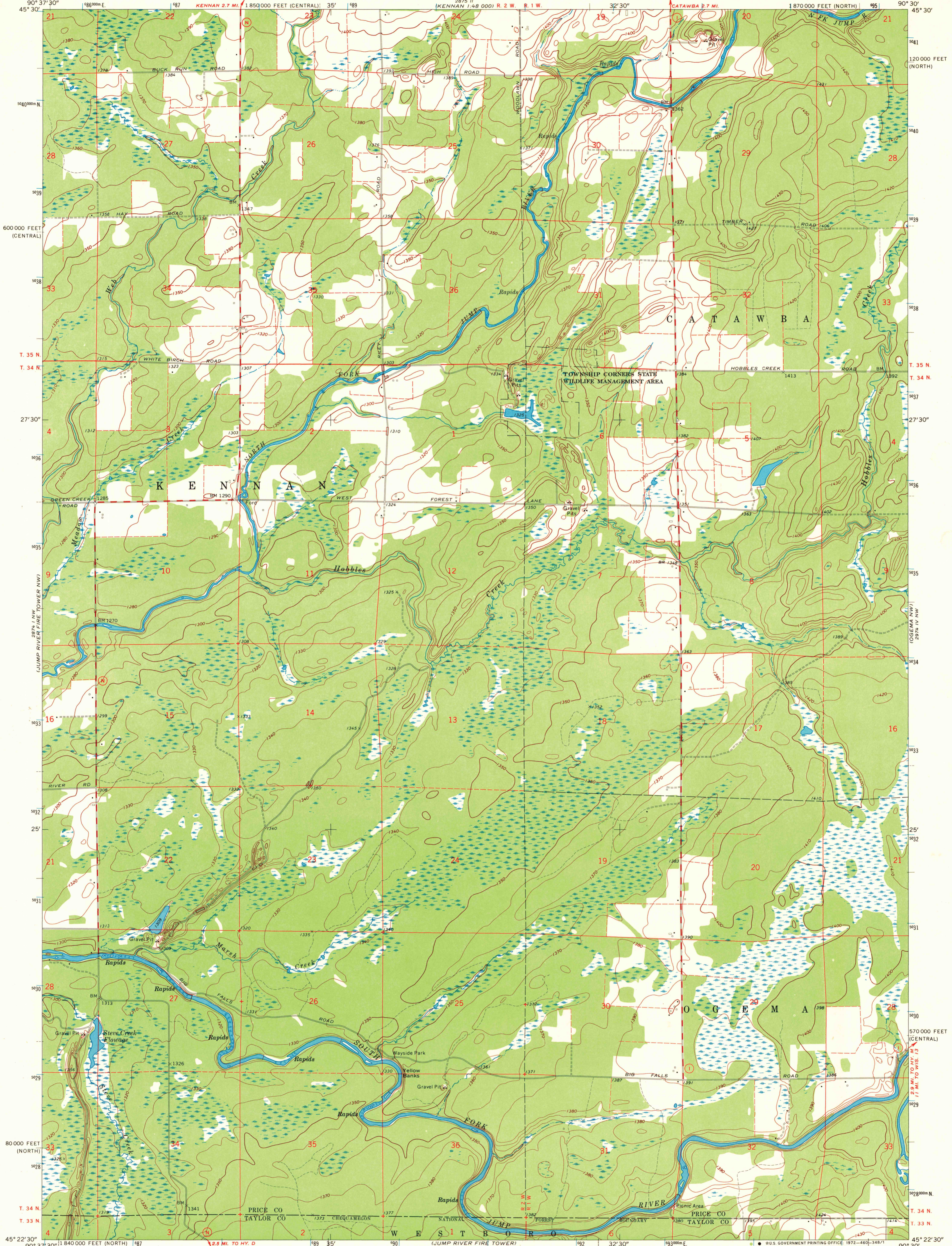


UNITED STATES
DEPARTMENT OF THE INTERIOR
GEOLOGICAL SURVEY

JUMP RIVER FIRE TOWER NE QUADRANGLE
WISCONSIN
7.5 MINUTE SERIES (TOPOGRAPHIC)
NE/4 JUMP RIVER FIRE TOWER 15' QUADRANGLE



Mapped, edited, and published by the Geological Survey

Control by USGS and USC&GS

Topography by photogrammetric methods from aerial photographs taken 1965. Field checked 1970

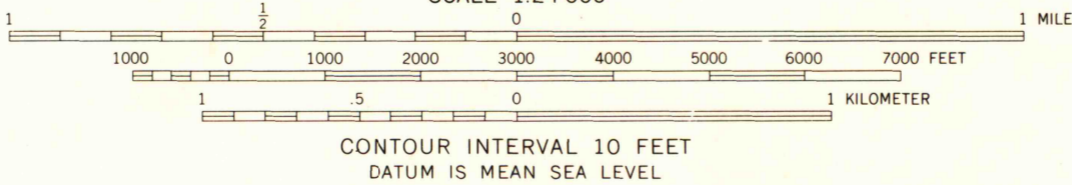
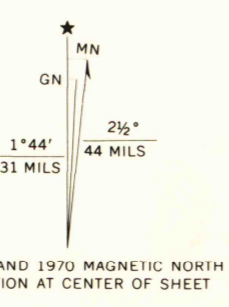
Polyconic projection. 1927 North American datum

10,000-foot grids based on Wisconsin coordinate system, north and central zones

1000-meter Universal Transverse Mercator grid ticks, zone 15, shown in blue

Fine red dashed lines indicate selected fence and field lines where generally visible on aerial photographs

This information is unchecked



CONTOUR INTERVAL 10 FEET
DATUM IS MEAN SEA LEVEL

ROAD CLASSIFICATION

- Secondary highway, all weather, Light-duty road, all weather, hard surface
- Unimproved road, fair or dry weather
- State Route



JUMP RIVER FIRE TOWER NE, WIS.
NE/4 JUMP RIVER FIRE TOWER 15' QUADRANGLE
N4522.5-W9030/7.5

1970

AMS 2874 1 NE-SERIES V861

MAP AND AIR PHOTO LIBRARY

FEB 15 1973

University of Wisconsin

1970 Copy 1-1