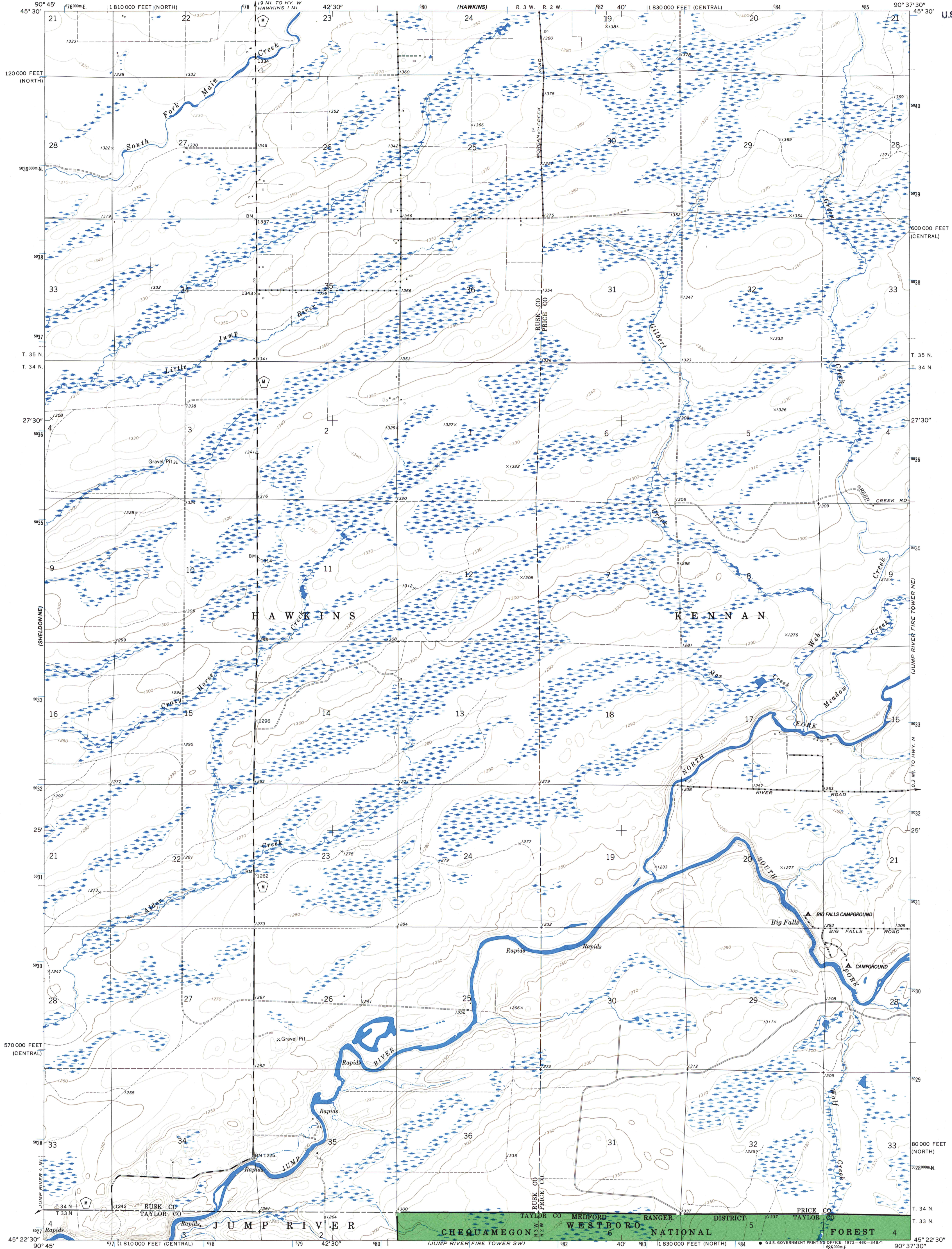
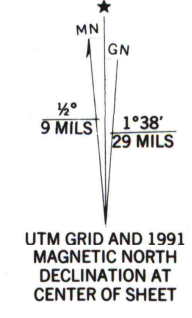


U.S. Depository Copy  
Do Not Discard  
JAN 05 1993

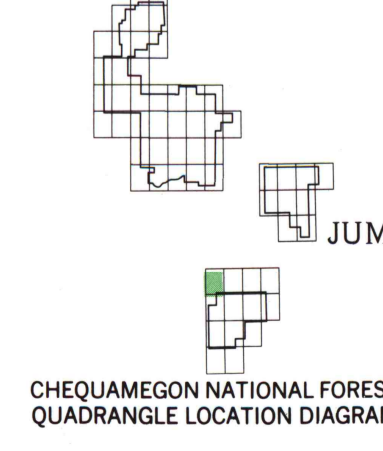


Base map prepared by the U.S. Geological Survey  
Control by USGS and USC&GS  
Topography by photogrammetric methods from aerial photographs taken 1965. Field checked 1970.  
Polyconic projection. 1927 North American datum  
10,000-foot grids based on Wisconsin coordinate system, central and north zones  
1000-meter Universal Transverse Mercator grid ticks, zone 15, shown in blue  
Modification to USGS base map by the Geometrics Service Center from 1986 and 1988 aerial photography and 1990 correction guides furnished by the Eastern Region.



- SCALE 1:24 000
- CONTOUR INTERVAL 10 FEET  
DATUM IS MEAN SEA LEVEL
- |                                 |                       |
|---------------------------------|-----------------------|
| National Forest Boundary        | Primary Highway       |
| National Forest Land as of 1990 | Secondary Highway     |
| Surveyed, Location Reliable     | Improved Road, Paved  |
| Surveyed, Location Approximate  | Improved Road, Gravel |
| Unsurveyed, Protraction         | Improved Road, Dirt   |
|                                 | Unimproved Road, Dirt |
|                                 | Trail                 |

- |                     |
|---------------------|
| Interstate Highway  |
| U.S. Highway        |
| State Highway       |
| County Road         |
| Primary Forest Road |
| Forest Road         |
| Forest Trail        |



Copies of this map are available for purchase at Forest Supervisor's Headquarters 1170 South 4th Avenue Park Falls, WI 54552

JUMP RIVER FIRE TOWER NW, WIS.  
NW/4 JUMP RIVER FIRE TOWER 15' QUADRANGLE  
N4522.5-W9037.5/7.5  
1970  
DMA 2874 1 NW-SERIES W861

A.H. ROBINSON  
MAP LIBRARY  
NOV - 6 1995 PD  
University of Wisconsin  
Madison

U.S. Depository Copy  
DO NOT DISCARD

6  
4122  
.25  
524  
.155  
Sh.47

A 13.28: 242/7/98/45090-06