

UNITED STATES
DEPARTMENT OF THE INTERIOR
GEOLOGICAL SURVEY

KELLY QUADRANGLE
WISCONSIN-JUNEAU CO.
7.5 MINUTE SERIES (TOPOGRAPHIC)
NE 4 MAUSTON 15' QUADRANGLE

2077 III SW
(ARNDT)

2077 III SW
(ARNDT)

2077 III SW
(ARNDT)

2077 III SW
(ARNDT)

2077 III SW
(ARNDT)

2077 III SW
(ARNDT)

2077 III SW
(ARNDT)

2077 III SW
(ARNDT)

2077 III SW
(ARNDT)

2077 III SW
(ARNDT)

2077 III SW
(ARNDT)

2077 III SW
(ARNDT)

2077 III SW
(ARNDT)

2077 III SW
(ARNDT)

2077 III SW
(ARNDT)

2077 III SW
(ARNDT)

2077 III SW
(ARNDT)

2077 III SW
(ARNDT)

2077 III SW
(ARNDT)

2077 III SW
(ARNDT)

2077 III SW
(ARNDT)

2077 III SW
(ARNDT)

2077 III SW
(ARNDT)

2077 III SW
(ARNDT)

2077 III SW
(ARNDT)

2077 III SW
(ARNDT)

2077 III SW
(ARNDT)

2077 III SW
(ARNDT)

2077 III SW
(ARNDT)

2077 III SW
(ARNDT)

2077 III SW
(ARNDT)

2077 III SW
(ARNDT)

2077 III SW
(ARNDT)

2077 III SW
(ARNDT)

2077 III SW
(ARNDT)

2077 III SW
(ARNDT)

2077 III SW
(ARNDT)

2077 III SW
(ARNDT)

2077 III SW
(ARNDT)

2077 III SW
(ARNDT)

2077 III SW
(ARNDT)

2077 III SW
(ARNDT)

2077 III SW
(ARNDT)

2077 III SW
(ARNDT)

2077 III SW
(ARNDT)

2077 III SW
(ARNDT)

2077 III SW
(ARNDT)

2077 III SW
(ARNDT)

2077 III SW
(ARNDT)

2077 III SW
(ARNDT)

2077 III SW
(ARNDT)

2077 III SW
(ARNDT)

2077 III SW
(ARNDT)

2077 III SW
(ARNDT)

2077 III SW
(ARNDT)

2077 III SW
(ARNDT)

2077 III SW
(ARNDT)

2077 III SW
(ARNDT)

2077 III SW
(ARNDT)

2077 III SW
(ARNDT)

2077 III SW
(ARNDT)

2077 III SW
(ARNDT)

2077 III SW
(ARNDT)

2077 III SW
(ARNDT)

2077 III SW
(ARNDT)

2077 III SW
(ARNDT)

2077 III SW
(ARNDT)

2077 III SW
(ARNDT)

2077 III SW
(ARNDT)

2077 III SW
(ARNDT)

2077 III SW
(ARNDT)

2077 III SW
(ARNDT)

2077 III SW
(ARNDT)

2077 III SW
(ARNDT)

2077 III SW
(ARNDT)

2077 III SW
(ARNDT)

2077 III SW
(ARNDT)

2077 III SW
(ARNDT)

2077 III SW
(ARNDT)

2077 III SW
(ARNDT)

2077 III SW
(ARNDT)

2077 III SW
(ARNDT)

2077 III SW
(ARNDT)

2077 III SW
(ARNDT)

2077 III SW
(ARNDT)

2077 III SW
(ARNDT)

2077 III SW
(ARNDT)

2077 III SW
(ARNDT)

2077 III SW
(ARNDT)

2077 III SW
(ARNDT)

2077 III SW
(ARNDT)

2077 III SW
(ARNDT)

2077 III SW
(ARNDT)

2077 III SW
(ARNDT)

2077 III SW
(ARNDT)

2077 III SW
(ARNDT)

2077 III SW
(ARNDT)

2077 III SW
(ARNDT)

2077 III SW
(ARNDT)

2077 III SW
(ARNDT)

2077 III SW
(ARNDT)

2077 III SW
(ARNDT)

2077 III SW
(ARNDT)

2077 III SW
(ARNDT)

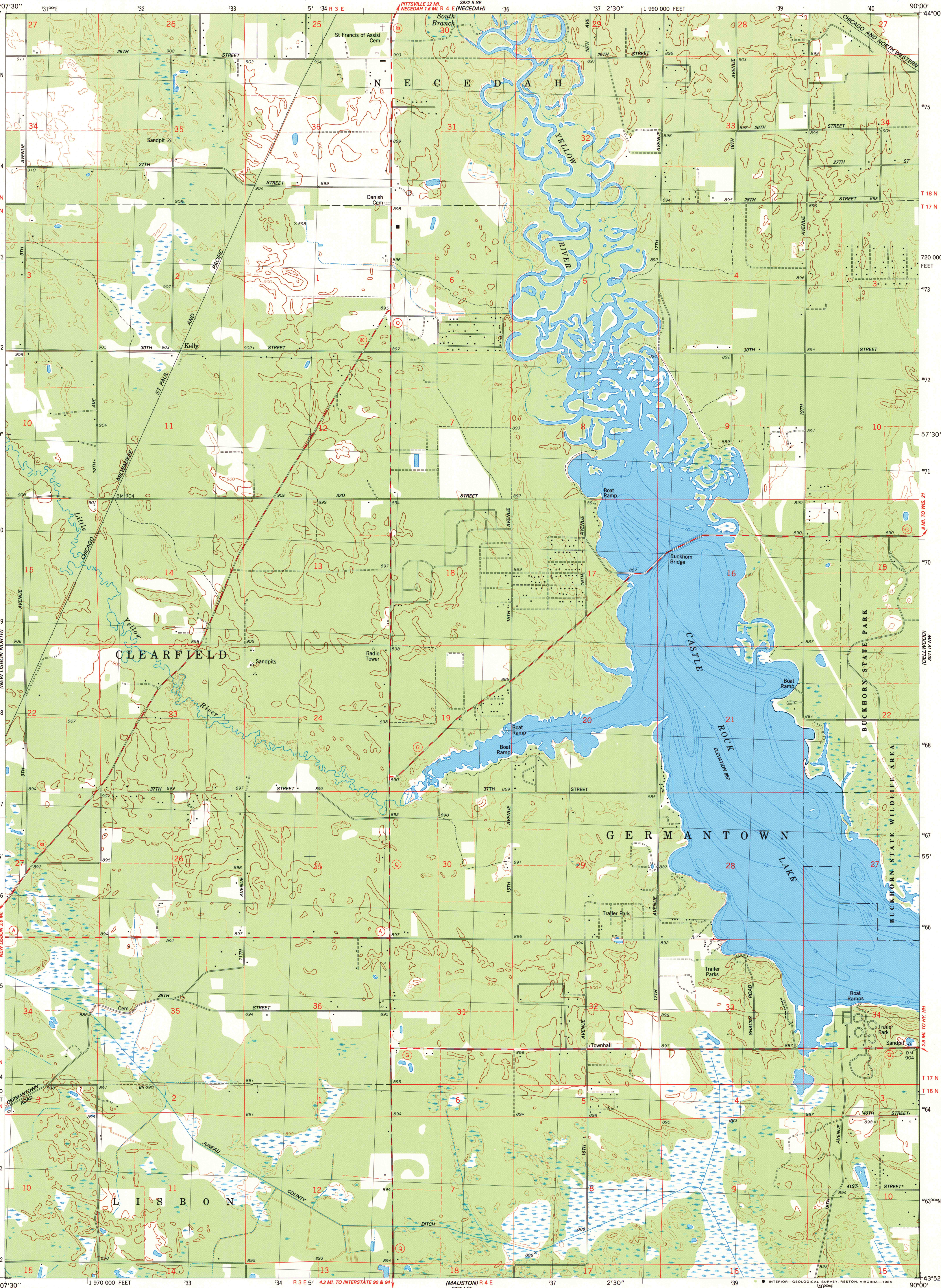
2077 III SW
(ARNDT)

2077 III SW
(ARNDT)

2077 III SW
(ARNDT)

2077 III SW
(ARNDT)

2077 III SW
(ARNDT)



Mapped, edited, and published by the Geological Survey in cooperation with the Wisconsin Division of Highways and Wisconsin Geological and Natural History Survey Control by USGS and NGS/NOAA
Topography by photogrammetric methods from aerial photographs taken 1961. Revised from aerial photographs taken 1981. Field checked 1983. Map edited 1983.
Hydrography compiled from information furnished by Wisconsin Department of Natural Resources
Projection and 10,000-foot grid ticks: Wisconsin coordinate system, south zone (Lambert conformal conic)
1000-meter Universal Transverse Mercator grid, zone 15
1927 North American Datum
To place on the predicted North American Datum 1983, move the projection lines 5 meters north and 11 meters east as shown by dashed corner ticks
There may be private inholdings within the boundaries of the National or State reservations shown on this map
Fine red dashed lines indicate selected fence and field lines where generally visible on aerial photographs. This information is unchecked

UTM GRID AND 1983 MAGNETIC NORTH DECLINATION AT CENTER OF SHEET
27 MILS
2°02'
36 MILS

SCALE 1:24 000
1 000 0 1000 2000 3000 4000 5000 6000 7000 FEET
1 0 1 2 3 4 5 6 7 8 9 10 KILOMETER
CONTOUR INTERVAL 10 FEET
DOTTED LINES REPRESENT 5-FOOT CONTOURS
NATIONAL GEODETIC VERTICAL DATUM OF 1929

THIS MAP COMPLIES WITH NATIONAL MAP ACCURACY STANDARDS FOR SALE BY U.S. GEOLOGICAL SURVEY, RESTON, VIRGINIA 22092
AND WISCONSIN GEOLOGICAL AND NATURAL HISTORY SURVEY, MADISON, WISCONSIN 53706
A FOLDER DESCRIBING TOPOGRAPHIC MAPS AND SYMBOLS IS AVAILABLE ON REQUEST



ROAD CLASSIFICATION
Primary highway, hard surface
Secondary highway, hard surface
Light-duty road, hard or improved surface
Unimproved road
Interstate Route
U.S. Route
State Route

KELLY, WIS.
NE 4 MAUSTON 15' QUADRANGLE
N4352.5-W9000.7.5

1983
DMA 2871 I NE-SERIES V861

A.H. ROBINSON
MAP LIBRARY
AUG 22 1984
University of Wisconsin
Madison

1983
COPY
1-1
X