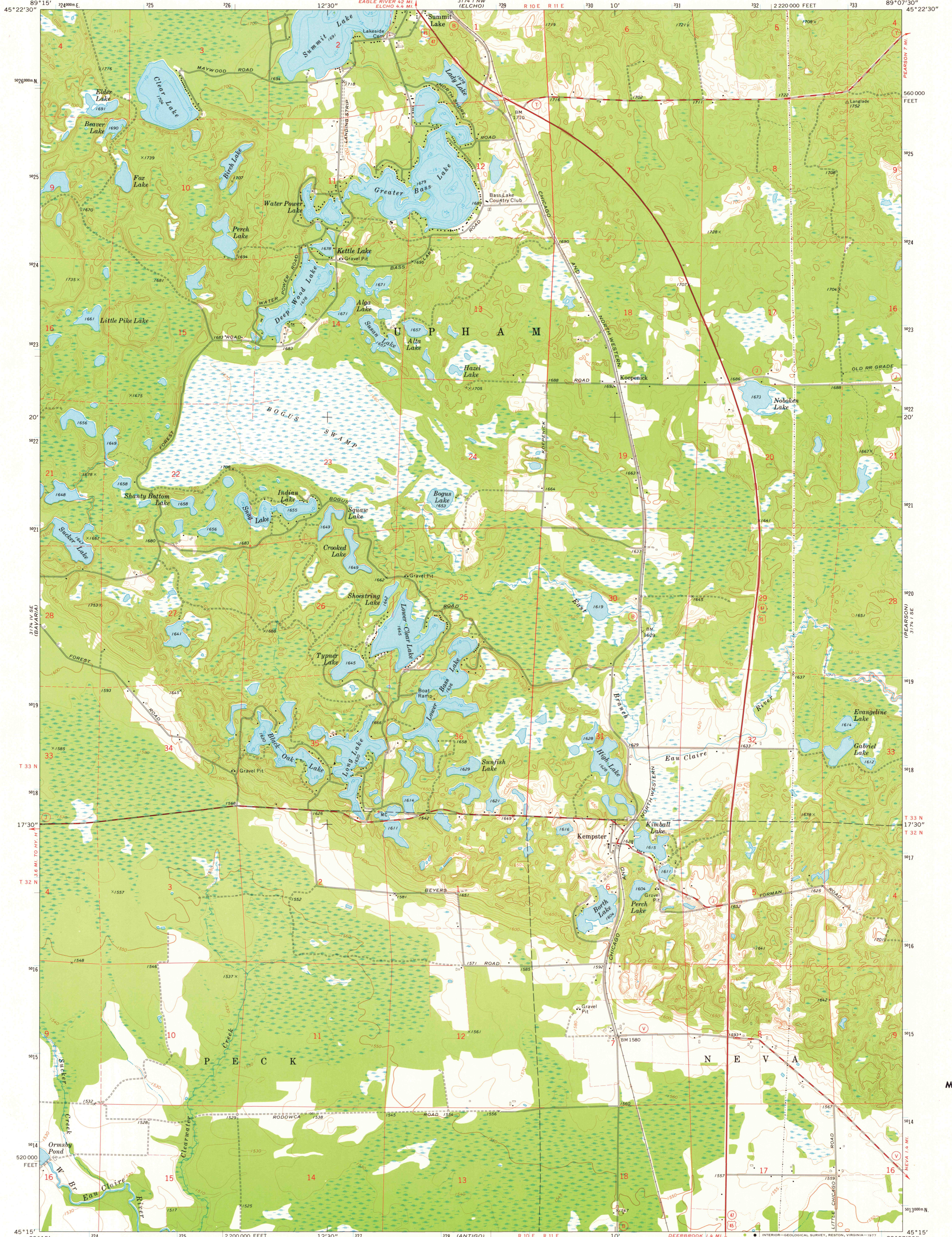


ENTERPRISE
89°15' 3240000 E

PEARSON
89°07'30" 45°22'30"



Mapped, edited, and published by the Geological Survey

Control by USGS and NOS/NOAA

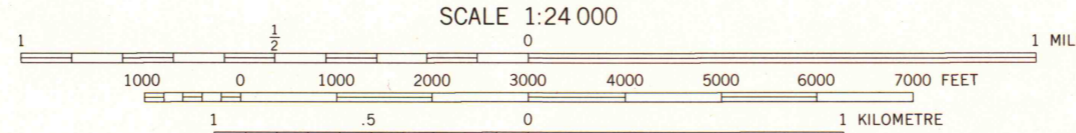
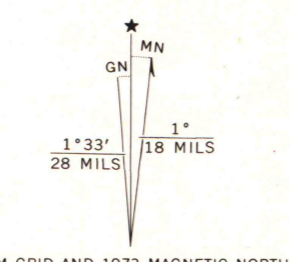
Topography by photogrammetric methods from aerial photographs taken 1972. Field checked 1973

Hydrography compiled from information furnished by Wisconsin Department of Natural Resources

Projection and 10,000-foot grid ticks: Wisconsin coordinate system, central zone (Lambert conformal conic)

1000-metre Universal Transverse Mercator grid ticks, zone 16, shown in blue. 1927 North American datum

Fine red dashed lines indicate selected fence and field lines where generally visible on aerial photographs. This information is unchecked



CONTOUR INTERVAL 10 FEET
DOTTED LINES REPRESENT 5-FOOT CONTOURS
NATIONAL GEODETIC VERTICAL DATUM OF 1929

THIS MAP COMPLIES WITH NATIONAL MAP ACCURACY STANDARDS
FOR SALE BY U.S. GEOLOGICAL SURVEY, RESTON, VIRGINIA 22092
AND BY THE WISCONSIN GEOLOGICAL AND NATURAL HISTORY SURVEY, MADISON, WISCONSIN 53706
A FOLDER DESCRIBING TOPOGRAPHIC MAPS AND SYMBOLS IS AVAILABLE ON REQUEST

ROAD CLASSIFICATION

- Primary highway, hard surface
- Secondary highway, hard surface
- Light-duty road, hard or improved surface
- Unimproved road
- Interstate Route
- U.S. Route
- State Route



KEMPSTER, WIS.
SW/4 ELCHO 15' QUADRANGLE
N4515-W8907.5/7.5

1973
AMS 3174 I SW—SERIES V861

MAP AND AIR PHOTO LIBRARY
SEP 19 1977
University of Wisconsin
Madison

1973
copy
1-1