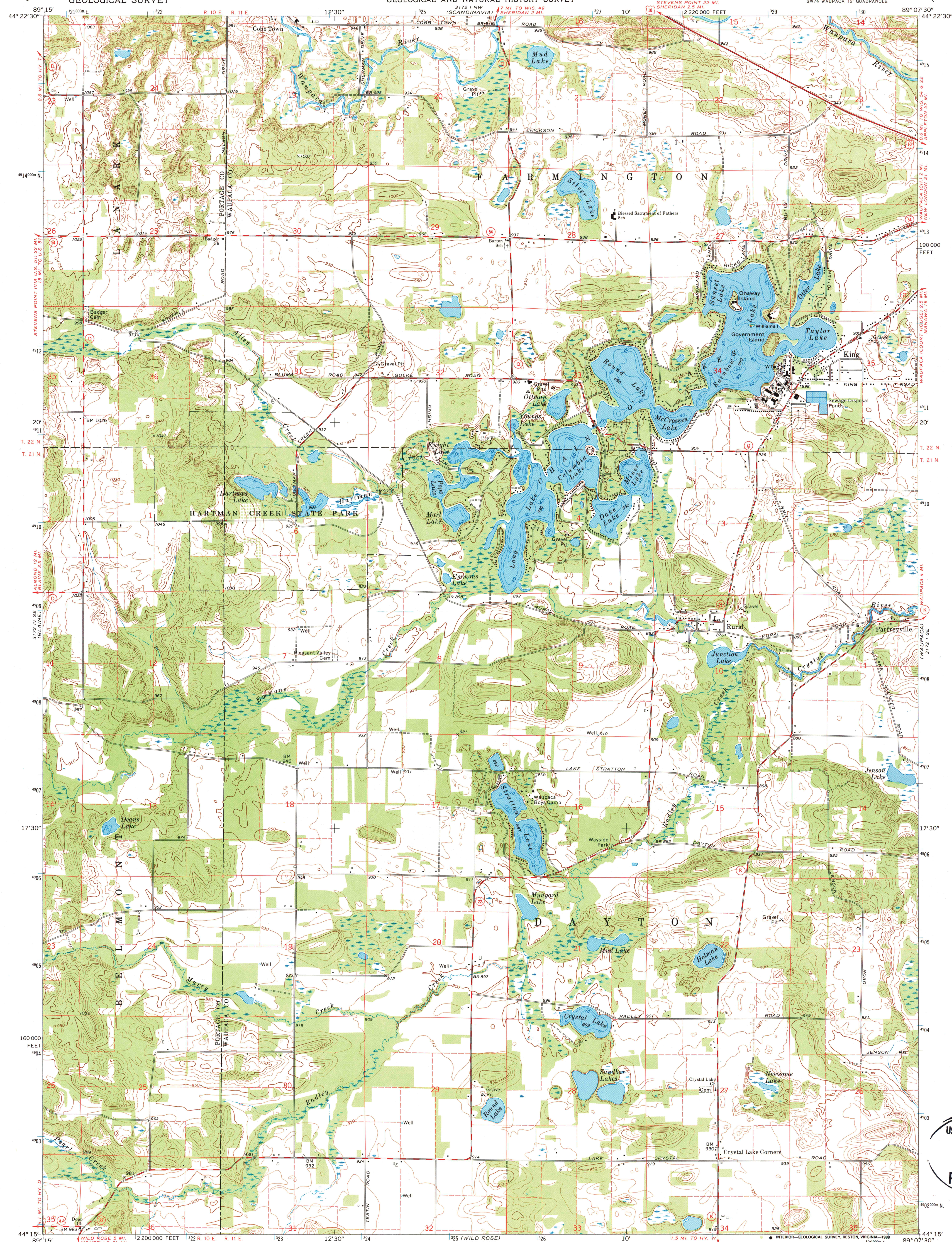


UNITED STATES  
DEPARTMENT OF THE INTERIOR  
GEOLOGICAL SURVEY

STATE OF WISCONSIN  
DIVISION OF HIGHWAYS  
GEOLOGICAL AND NATURAL HISTORY SURVEY

KING QUADRANGLE  
WISCONSIN  
7.5 MINUTE SERIES (TOPOGRAPHIC)



Mapped, edited, and published by the Geological Survey  
in cooperation with the Wisconsin Highway Commission  
and Wisconsin Geological and Natural History Survey

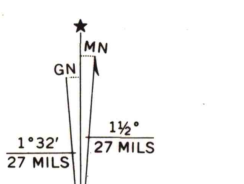
Control by USGS and USC&GS

Topography by photogrammetric methods from aerial  
photographs taken 1969. Field checked 1969

Depth curves compiled from charts furnished by  
Wisconsin Department of Natural Resources

Polyconic projection. 1927 North American datum  
10,000-foot grid based on Wisconsin coordinate system, central zone  
1000-meter Universal Transverse Mercator grid ticks,  
zone 16, shown in blue

To place on the predicted North American Datum 1983,  
move the projection lines 5 meters north and  
10 meters east as shown by dashed corner ticks



SCALE 1:24,000  
CONTOUR INTERVAL 10 FEET  
NATIONAL GEODETIC VERTICAL DATUM OF 1929

THIS MAP COMPLIES WITH NATIONAL MAP ACCURACY STANDARDS  
FOR SALE BY U.S. GEOLOGICAL SURVEY, DENVER, COLORADO 80225, OR RESTON, VIRGINIA 22092  
AND WISCONSIN GEOLOGICAL AND NATURAL HISTORY SURVEY, MADISON, WISCONSIN 53706  
A FOLDER DESCRIBING TOPOGRAPHIC MAPS AND SYMBOLS IS AVAILABLE ON REQUEST

Map photoinspected 1982  
No major culture or drainage changes observed



QUADRANGLE LOCATION

ROAD CLASSIFICATION  
Primary highway, all weather, hard surface  
Secondary highway, all weather, hard surface  
Light-duty road, all weather, improved surface  
Unimproved road, fair or dry weather  
U.S. Route  
State Route

KING, WIS.  
SW 1/4 WAUPACA 15' QUADRANGLE  
44089-C2-TF-024

1969  
PHOTOINSPECTED 1982  
DMA 3172 1 SW-SERIES V861

USGS NMD HISTORICAL MAP  
MAY 13 1988  
REC'D FILE COPY