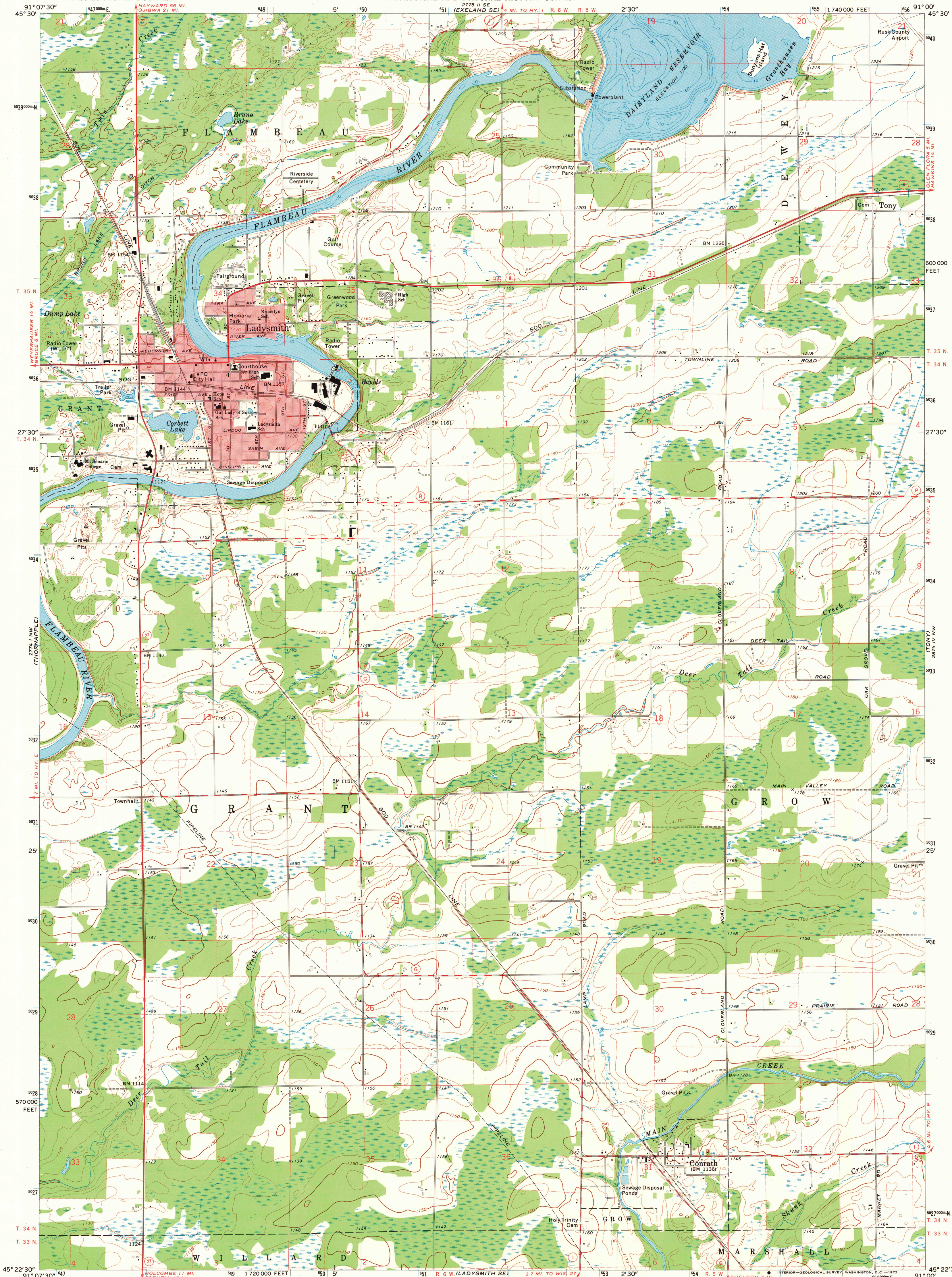
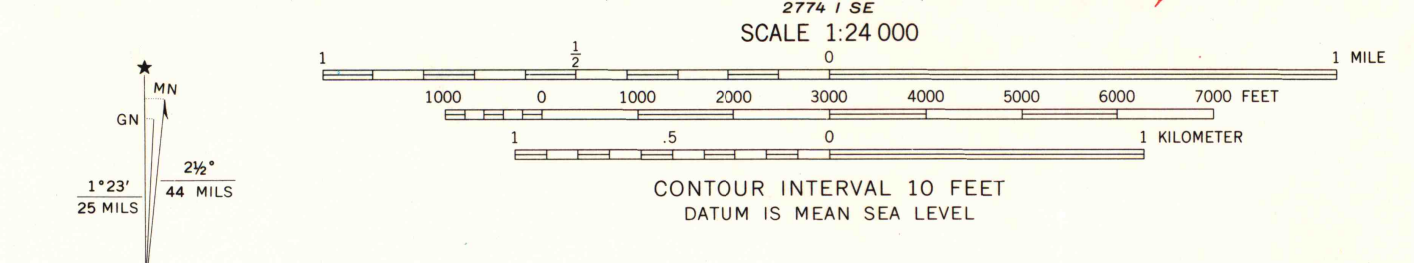


27° 11' 30" N
181° 8' 30" W



Mapped, edited, and published by the Geological Survey in cooperation with the Wisconsin Highway Commission and Wisconsin Geological and Natural History Survey. Control by USGS and USC&GS. Topography by photogrammetric methods from aerial photographs taken 1971. Field checked 1971. Hydrography compiled from information furnished by Wisconsin Department of Natural Resources. Projection and 10,000-foot grid ticks: Wisconsin coordinate system, central zone (Lambert conformal conic). 1000-meter Universal Transverse Mercator grid ticks, zone 15, shown in blue. 1927 North American datum. Red tint indicates areas in which only landmark buildings are shown. Fine red dashed lines indicate selected fence and field lines where generally visible on aerial photographs. This information is unchecked.



ROAD CLASSIFICATION

Primary highway, hard surface	Light-duty road, hard or improved surface
Secondary highway, hard surface	Unimproved road
Interstate Route	U. S. Route
	State Route



QUADRANGLE LOCATION
LADYSMITH, WIS.
NE/4 LADYSMITH 15' QUADRANGLE
N4522.5—W9100.7/5
1971
AMS 2774 1 NE—SERIES V861

1971
Copy
1-1

MAP AND AIR PHOTO LIBRARY
DEC 17 1973
University of Wisconsin