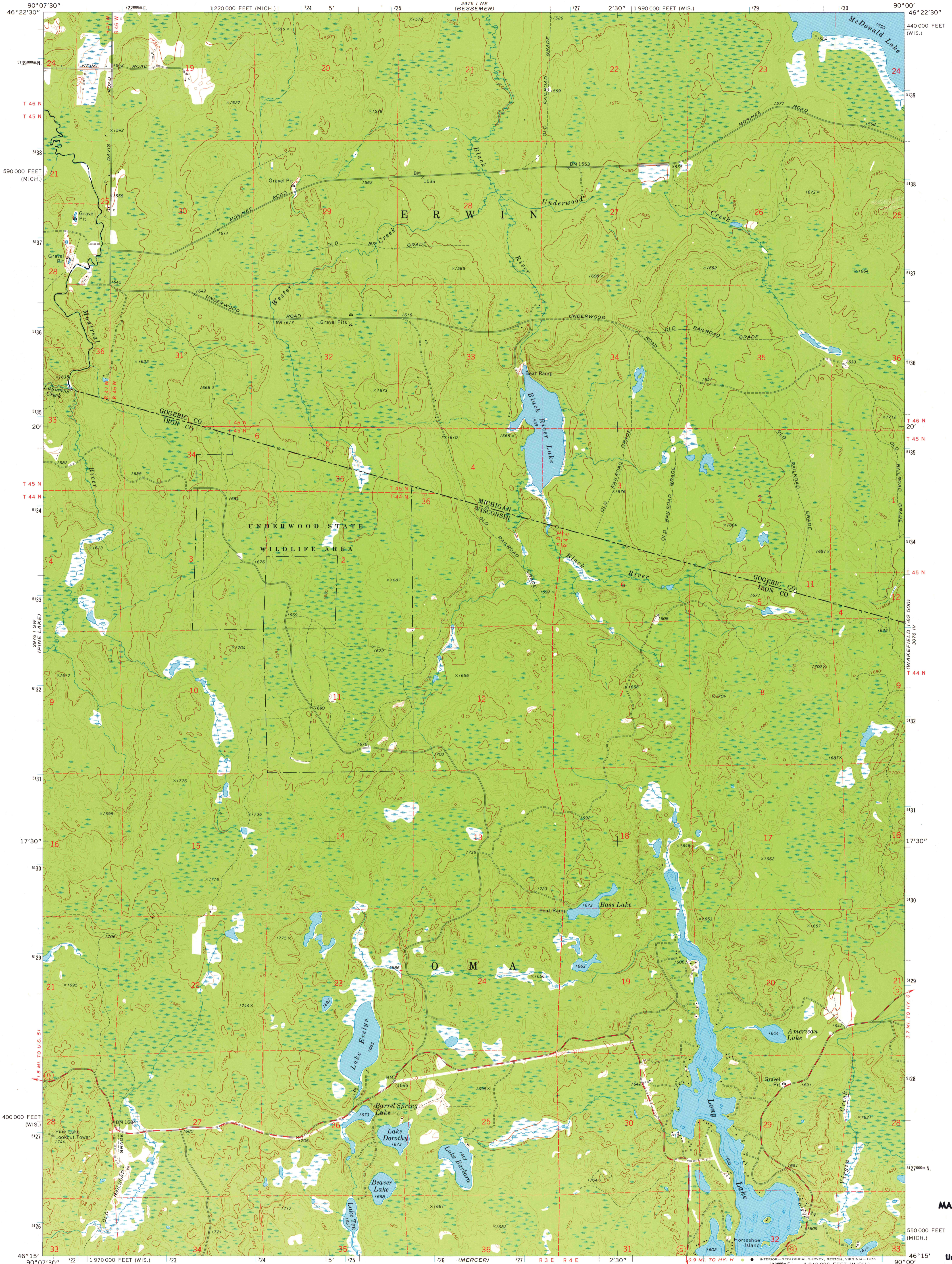


UNITED STATES  
DEPARTMENT OF THE INTERIOR  
GEOLOGICAL SURVEY

LAKE EVELYN QUADRANGLE  
WISCONSIN-MICHIGAN  
7.5 MINUTE SERIES (TOPOGRAPHIC)  
SE/4 IRONWOOD 15' QUADRANGLE



Mapped, edited, and published by the Geological Survey  
Control by USGS and NOS/NOAA  
Topography by photogrammetric methods from aerial  
photographs taken 1973. Field checked 1973  
Hydrography compiled from information furnished by  
Wisconsin Department of Natural Resources  
Projection: Wisconsin coordinate system, north zone  
(Lambert conformal conic)  
10,000-foot grid ticks based on Wisconsin coordinate system,  
north zone, and Michigan coordinate system, north zone  
1000-metre Universal Transverse Mercator grid ticks,  
zone 15, shown in blue. 1927 North American datum  
Fine red dashed lines indicate selected fence and field lines where  
generally visible on aerial photographs  
This information is unchecked

SCALE 1:24,000  
CONTOUR INTERVAL 10 FEET  
NATIONAL GEODETIC VERTICAL DATUM OF 1929  
THIS MAP COMPLIES WITH NATIONAL MAP ACCURACY STANDARDS  
FOR SALE BY U.S. GEOLOGICAL SURVEY, RESTON, VIRGINIA 22092  
AND BY THE WISCONSIN GEOLOGICAL AND NATURAL HISTORY SURVEY, MADISON, WISCONSIN 53706  
A FOLDER DESCRIBING TOPOGRAPHIC MAPS AND SYMBOLS IS AVAILABLE ON REQUEST

ROAD CLASSIFICATION  
Primary highway, hard surface  
Secondary highway, hard surface  
Unimproved road  
Interstate Route  
U.S. Route  
State Route

LAKE EVELYN, WIS-MICH.  
SE/4 IRONWOOD 15' QUADRANGLE  
N4615-W9000/7.5

1973

AMS 2976 1 SE-SERIES V861

MAP AND AIR PHOTO  
LIBRARY

MAY 25 1977

University of Wisconsin  
Madison

1973  
COPY  
1-1