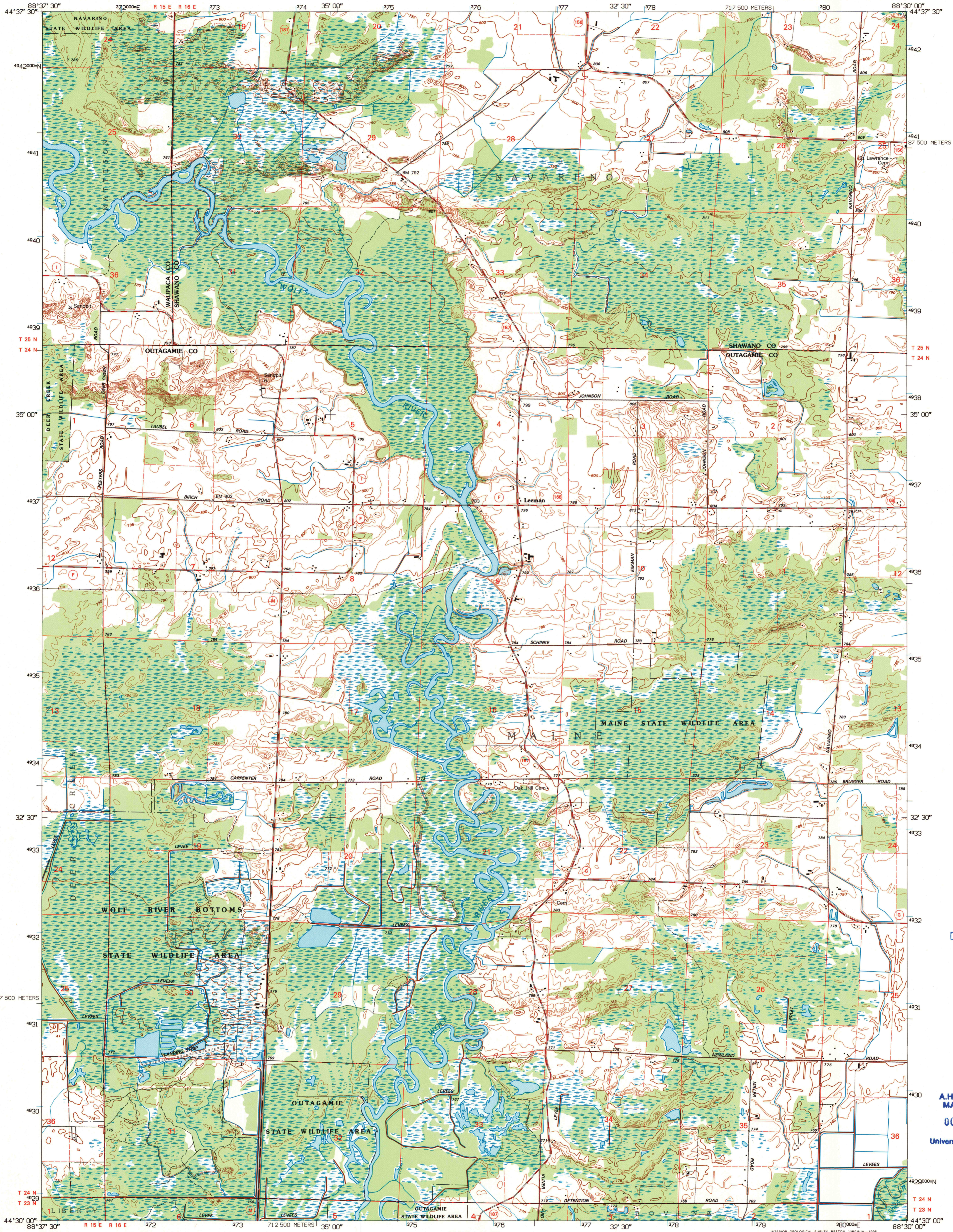


UNITED STATES  
DEPARTMENT OF THE INTERIOR  
GEOLOGICAL SURVEY

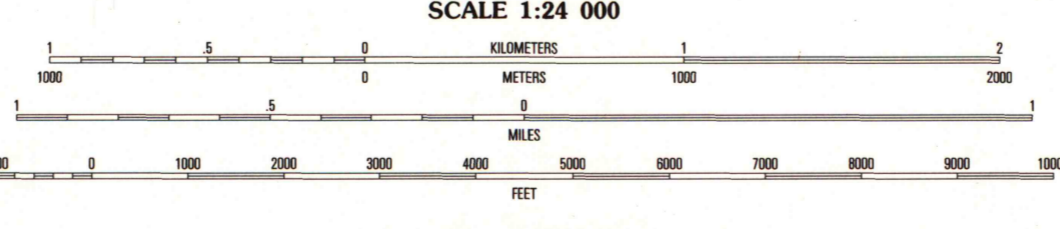
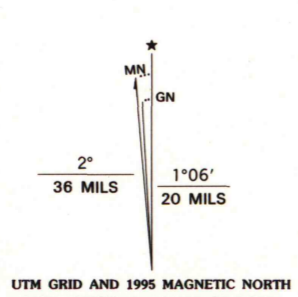
LEEMAN QUADRANGLE  
WISCONSIN  
7.5-MINUTE SERIES (TOPOGRAPHIC)



U.S. Regional  
Depository Copy  
DO NOT DISCARD

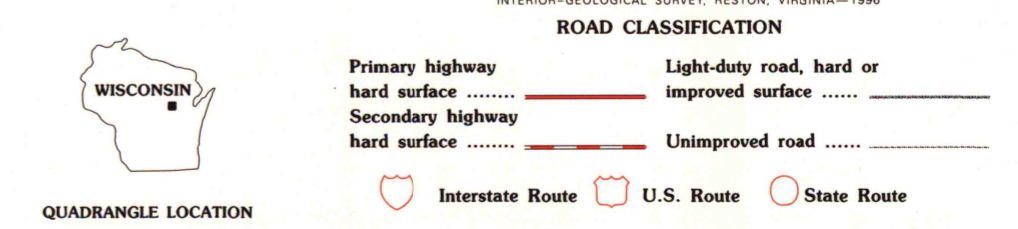
A.H. ROBINSON  
MAP LIBRARY  
OCT 9 1996  
University of Wisconsin  
Madison

Produced by the United States Geological Survey  
Compiled from imagery dated 1968. Revised from imagery  
dated 1992. FLS5 and survey control current as of 1969.  
Contours and elevations current as of 1968. Map edited 1995.  
North American Datum of 1983 (NAD 83). Projection and  
blue 1000-meter ticks: Universal Transverse Mercator, zone 16  
2500-meter ticks: Wisconsin Coordinate System of 1983 (central zone)  
North American Datum of 1927 (NAD 27) is shown by dashed  
corner ticks. The values of the shift between NAD 83 and NAD 27  
for 7.5-minute intersections are obtainable from National Geodetic  
Survey NADCON software.  
There may be private inholdings within the boundaries of  
the National or State reservations shown on this map.



CONTOUR INTERVAL 5 FEET  
NATIONAL GEODETIC VERTICAL DATUM OF 1929

THIS MAP COMPLIES WITH NATIONAL MAP ACCURACY STANDARDS  
FOR SALE BY U.S. GEOLOGICAL SURVEY  
DENVER, COLORADO 80225, OR RESTON, VIRGINIA 22092  
AND WISCONSIN GEOLOGICAL AND NATURAL HISTORY SURVEY, MADISON, WISCONSIN 53706  
A FOLDER DESCRIBING TOPOGRAPHIC MAPS AND SYMBOLS IS AVAILABLE ON REQUEST



QUADRANGLE LOCATION

1	2	3
4	5	6
7	8	

ADJOINING 7.5' QUADRANGLE NAMES

LEEMAN, WI  
44088-ES-TF-024  
1992  
DMA 3273 II SE-SERIES V861

1995  
COPY  
1-1  
X-2-600

