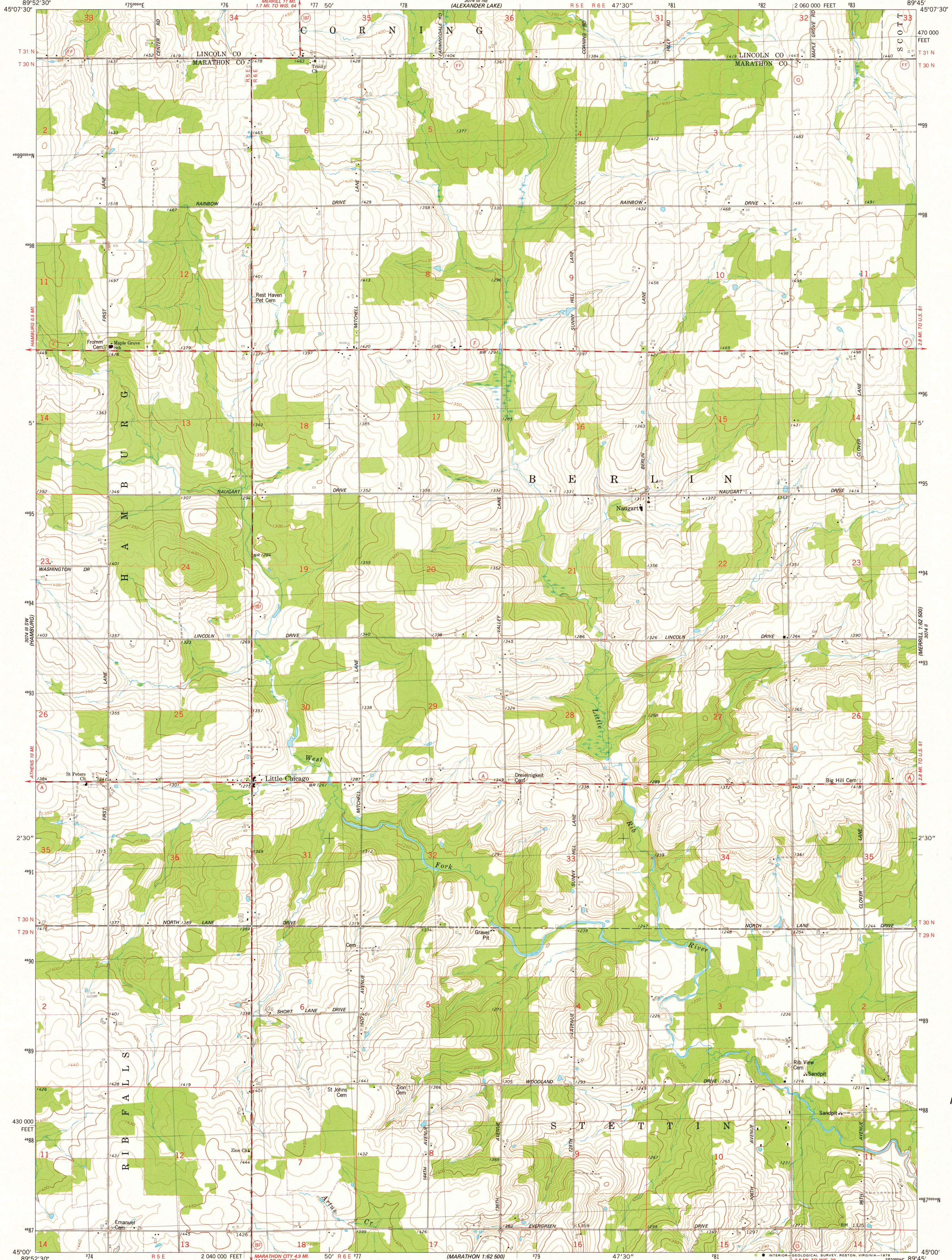


UNITED STATES
DEPARTMENT OF THE INTERIOR
GEOLOGICAL SURVEY



LITTLE CHICAGO QUADRANGLE
WISCONSIN
7.5 MINUTE SERIES (TOPOGRAPHIC)
SE/4 HAMBURG 15' QUADRANGLE

30' IN.
(MAGN.)
1:62,500



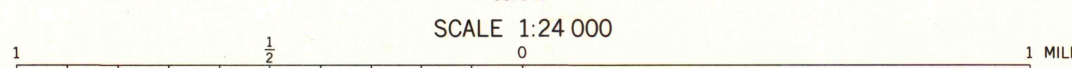
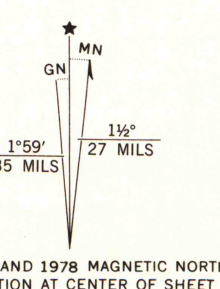
Mapped, edited, and published by the Geological Survey

Control by USGS and NOS/NOAA

Topography by photogrammetric methods from aerial photographs taken 1974. Field checked 1975. Map edited 1978

Projection and 10,000-foot grid ticks: Wisconsin coordinate system, central zone (Lambert conformal conic) 1000-meter Universal Transverse Mercator grid, zone 16 1927 North American datum

Fine red dashed lines indicate selected fence and field lines where generally visible on aerial photographs. This information is unchecked



CONTOUR INTERVAL 10 FEET
NATIONAL GEODETIC VERTICAL DATUM OF 1929



ROAD CLASSIFICATION

| | |
|---------------------------------|---|
| Primary highway, hard surface | Light-duty road, hard or improved surface |
| Secondary highway, hard surface | Unimproved road |
| Interstate Route | U. S. Route |
| | State Route |

LITTLE CHICAGO, WIS.
SE/4 HAMBURG 15' QUADRANGLE
N4500-W8945/7.5

1978

AMS 3074 III SE-SERIES V861

MAP AND AIR PHOTO
LIBRARY
SEP 6 1979
University of Wisconsin
Madison

1978
copy
1-1