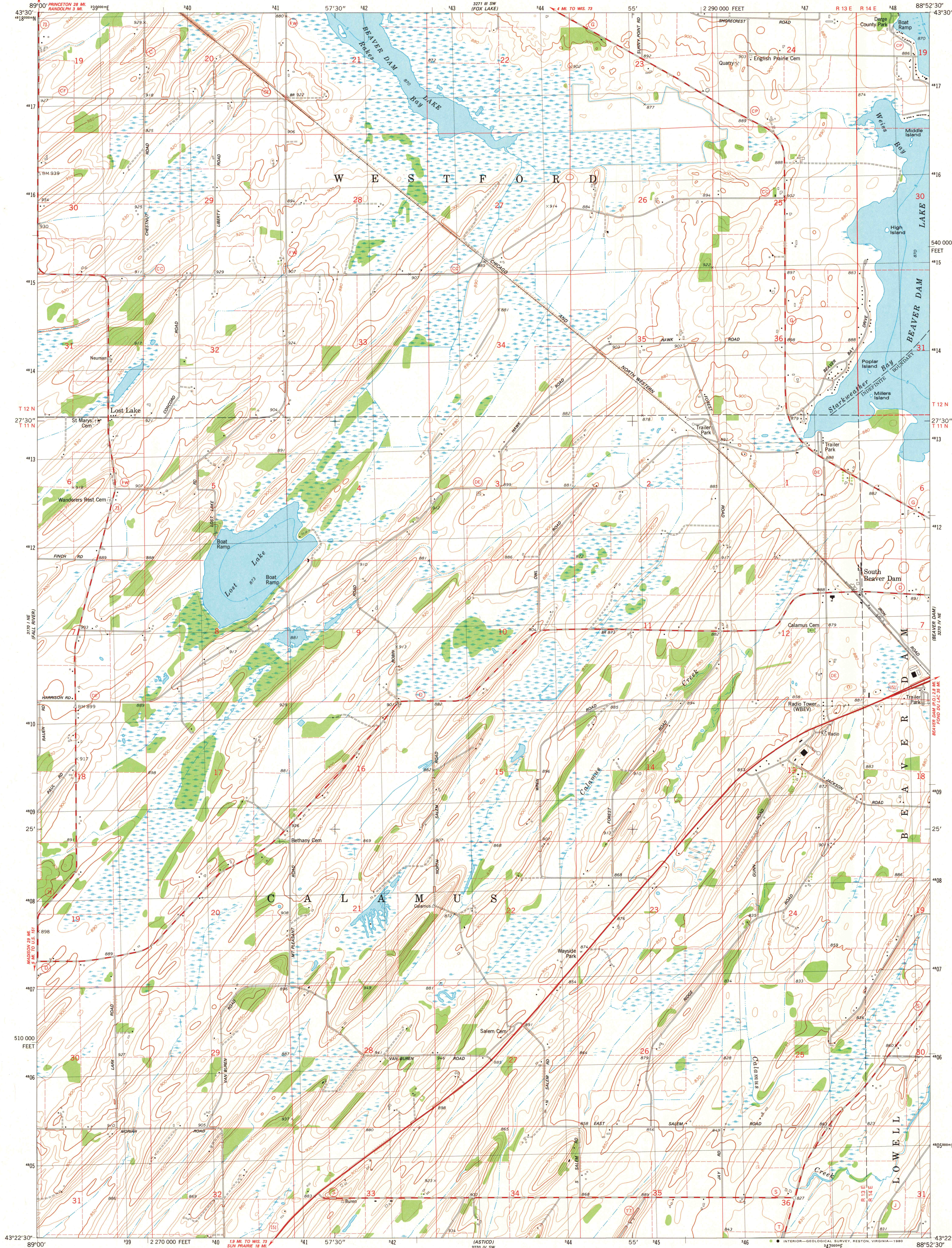
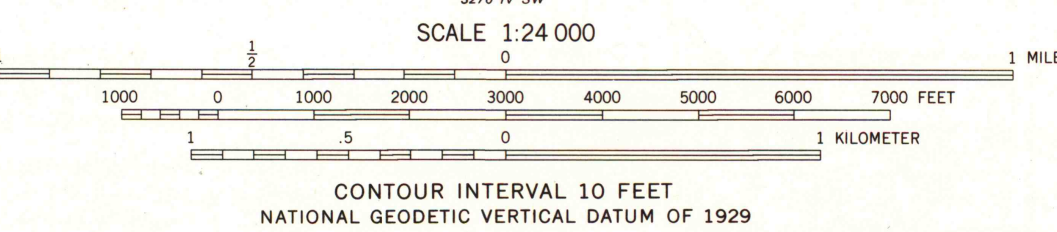


UNITED STATES  
DEPARTMENT OF THE INTERIOR  
GEOLOGICAL SURVEY

LOST LAKE QUADRANGLE  
WISCONSIN-DODGE CO.  
7.5 MINUTE SERIES (TOPOGRAPHIC)  
NW/4 BEAVER DAM 15' QUADRANGLE



Mapped, edited, and published by the Geological Survey  
Control by USGS and NOS/NOAA  
Topography by photogrammetric methods from aerial photographs  
taken 1975. Field checked 1976. Map edited 1980  
Hydrography compiled from information furnished by  
Wisconsin Department of Natural Resources  
Projection and 10,000-foot grid ticks: Wisconsin coordinate  
system, south zone (Lambert conformal conic)  
1000-meter Universal Transverse Mercator grid, zone 16  
1927 North American Datum  
To place on the predicted North American Datum 1983  
move the projection lines 4 meters north and  
9 meters east as shown by dashed corner ticks  
Fine red dashed lines indicate selected fence and field lines where  
generally visible on aerial photographs. This information is unchecked



ROAD CLASSIFICATION  
Primary highway, hard surface ———— Light-duty road, hard or improved surface ————  
Secondary highway, hard surface ———— Unimproved road ————  
○ Interstate Route ○ U. S. Route ○ State Route



LOST LAKE, WIS.  
NW/4 BEAVER DAM 15' QUADRANGLE  
N4322.5-W8852.5/7.5  
1980  
DMA 3270 IV NW-SERIES V881

MAP AND AIR PHOTO  
LIBRARY  
DEC 16 1980  
University of Wisconsin  
Madison

1980  
copy  
1-1