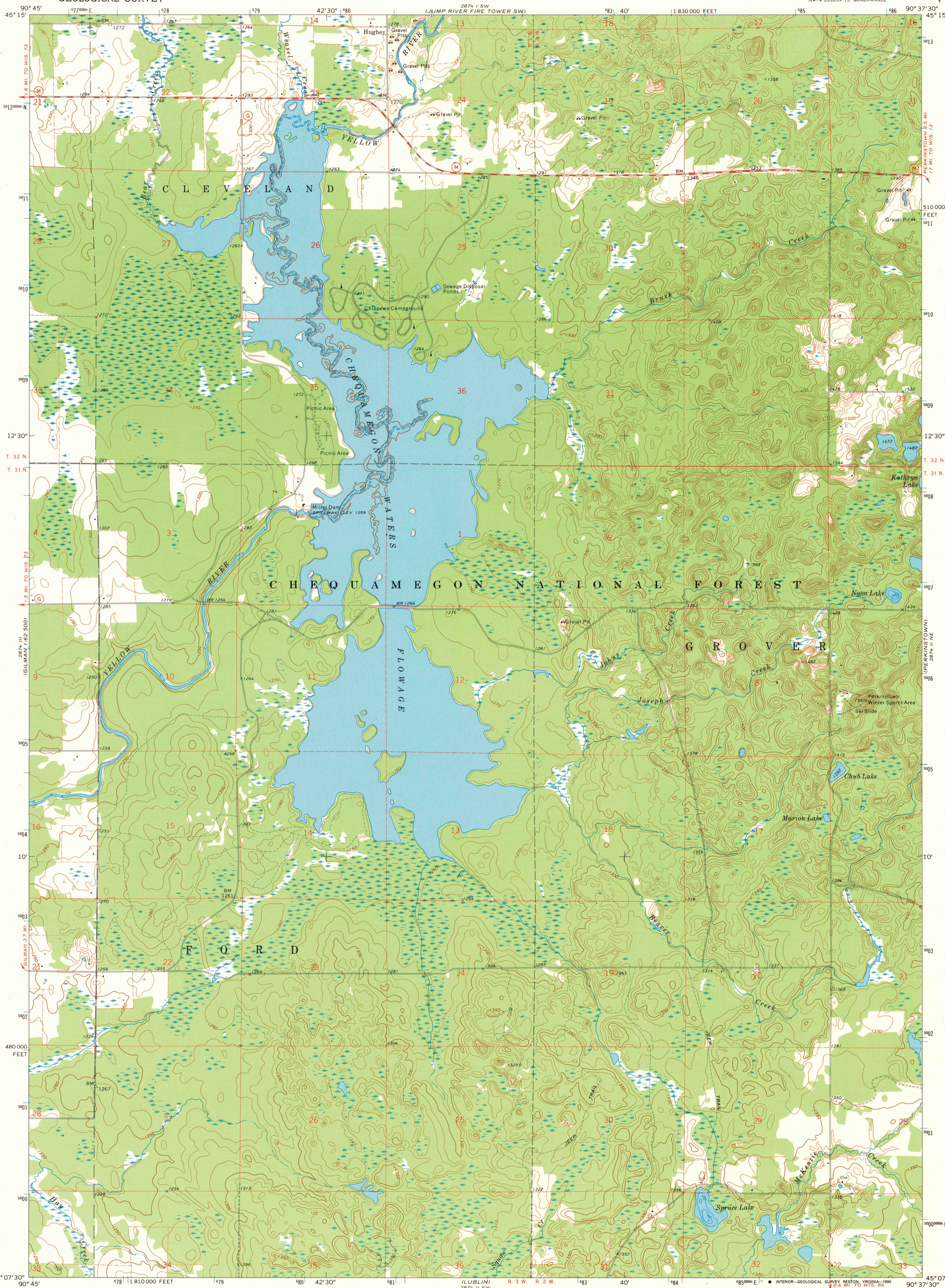
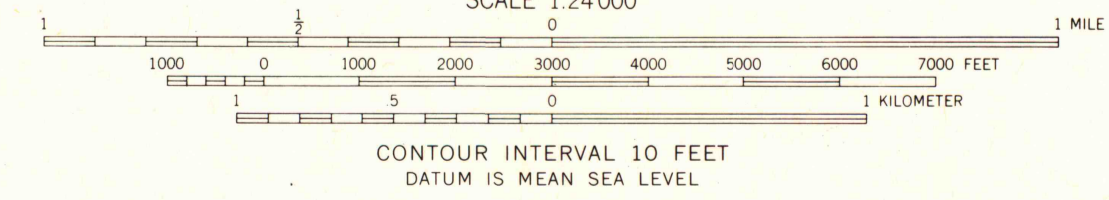
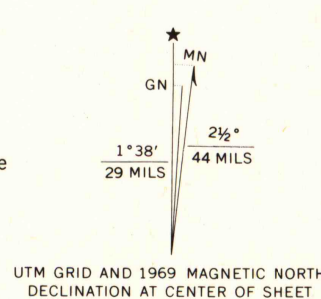


UNITED STATES
DEPARTMENT OF THE INTERIOR
GEOLOGICAL SURVEY

LUBLIN NW QUADRANGLE
WISCONSIN-TAYLOR CO.
7.5 MINUTE SERIES (TOPOGRAPHIC)
NW/4 LUBLIN 15' QUADRANGLE



Mapped, edited, and published by the Geological Survey
Control by USGS and USC&GS
Topography by photogrammetric methods from aerial photographs taken 1965. Field checked 1969
Polyconic projection. 1927 North American datum
10,000-foot grid based on Wisconsin coordinate system, central zone
1000-meter Universal Transverse Mercator grid ticks, zone 15, shown in blue
Depth curves compiled from charts furnished by Wisconsin Department of Natural Resources
Fine red dashed lines indicate selected fence and field lines where generally visible on aerial photographs. This information is unchecked



THIS MAP COMPLIES WITH NATIONAL MAP ACCURACY STANDARDS
FOR SALE BY U. S. GEOLOGICAL SURVEY, DENVER, COLORADO 80225, OR RESTON, VIRGINIA 22092
AND WISCONSIN GEOLOGICAL AND NATURAL HISTORY SURVEY, MADISON, WISCONSIN 53706
A FOLDER DESCRIBING TOPOGRAPHIC MAPS AND SYMBOLS IS AVAILABLE ON REQUEST



QUADRANGLE LOCATION
Map photinspected 1981
No major culture or drainage changes observed

ROAD CLASSIFICATION
Secondary highway, all weather, Light-duty road, all weather, hard surface, improved surface
Unimproved road, fair or dry weather
State Route

LUBLIN NW, WIS.
NW/4 LUBLIN 15' QUADRANGLE
N4507.5-W9037.5/7.5
1969
PHOTOINSPECTED 1981
AMS 2874 II NW-SERIES V861

U.S. Regional
Depository Copy
DO NOT DISCARD

A.H. ROBINSON
MAP LIBRARY
FEB 22 1991
University of Wisconsin
Madison

1981
COPY
1-1