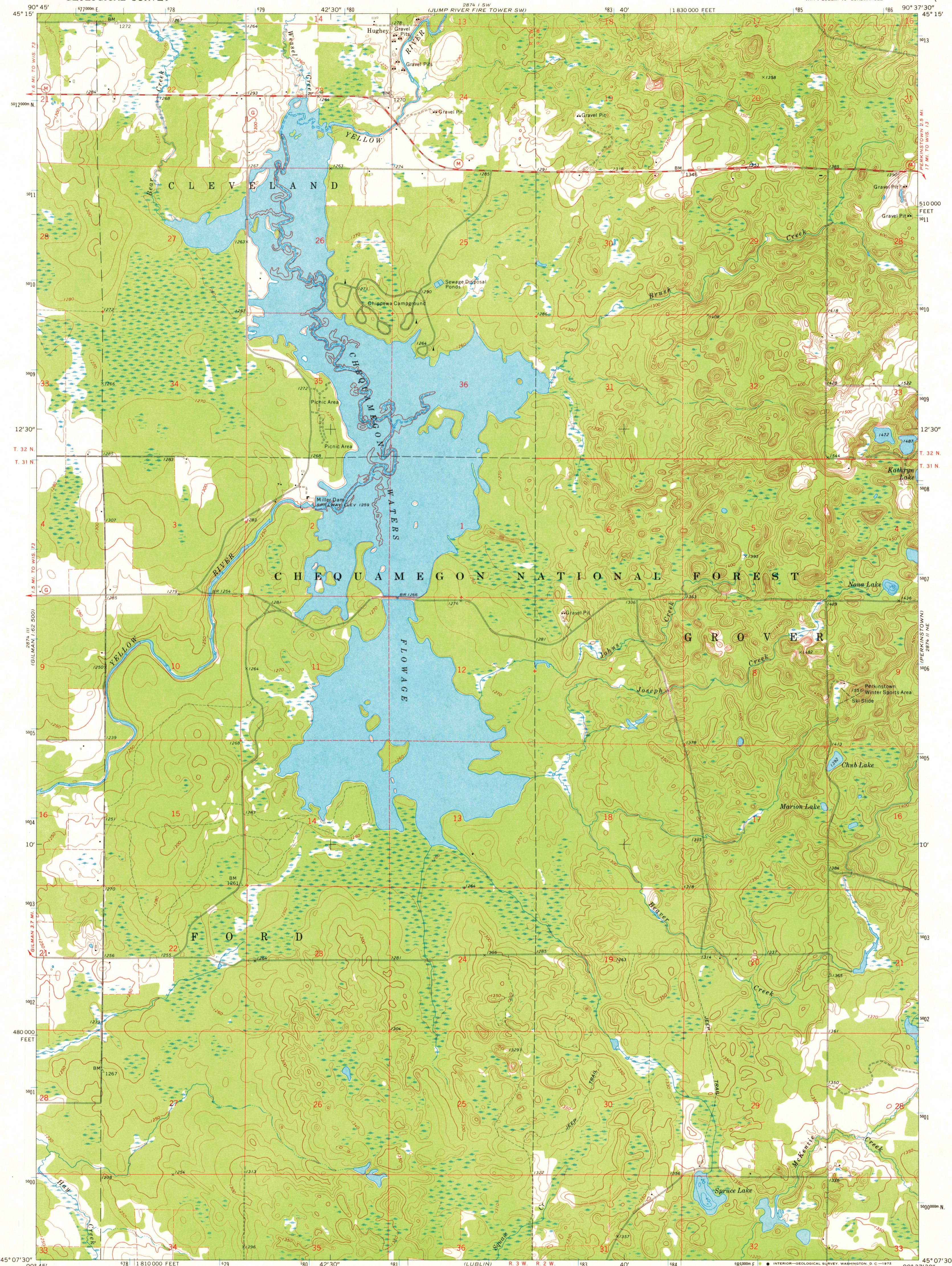
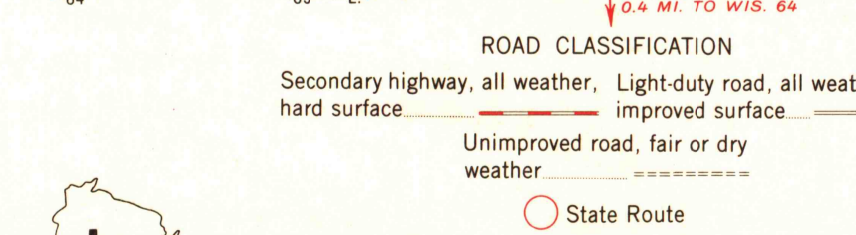
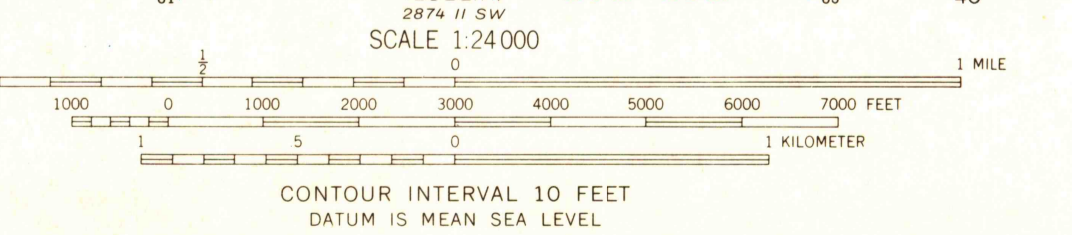
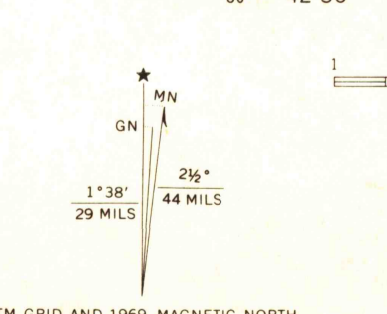


UNITED STATES
DEPARTMENT OF THE INTERIOR
GEOLOGICAL SURVEY

LUBLIN NW QUADRANGLE
WISCONSIN-TAYLOR CO.
7.5 MINUTE SERIES (TOPOGRAPHIC)
NW/4 LUBLIN 15' QUADRANGLE



Mapped, edited, and published by the Geological Survey
Control by USGS and USC&GS
Topography by photogrammetric methods from aerial photographs taken 1965. Field checked 1969
Polyconic projection. 1927 North American datum
10,000-foot grid based on Wisconsin coordinate system, central zone
1000-meter Universal Transverse Mercator grid ticks, zone 15, shown in blue
Depth curves compiled from charts furnished by Wisconsin Department of Natural Resources
Fine red dashed lines indicate selected fence and field lines where generally visible on aerial photographs. This information is unchecked



LUBLIN NW, WIS.
NW/4 LUBLIN 15' QUADRANGLE
N4507.5—W9037.5/7.5

THIS MAP COMPLIES WITH NATIONAL MAP ACCURACY STANDARDS
FOR SALE BY U. S. GEOLOGICAL SURVEY, WASHINGTON, D. C. 20242
AND BY THE WISCONSIN GEOLOGICAL AND NATURAL HISTORY SURVEY, MADISON, WISCONSIN 53706
A FOLDER DESCRIBING TOPOGRAPHIC MAPS AND SYMBOLS IS AVAILABLE ON REQUEST

1969
AMS 2874 II NW—SERIES V861
USGS HISTORICAL FILE TOPOGRAPHIC DIVISION

MAY 20 1972
2680