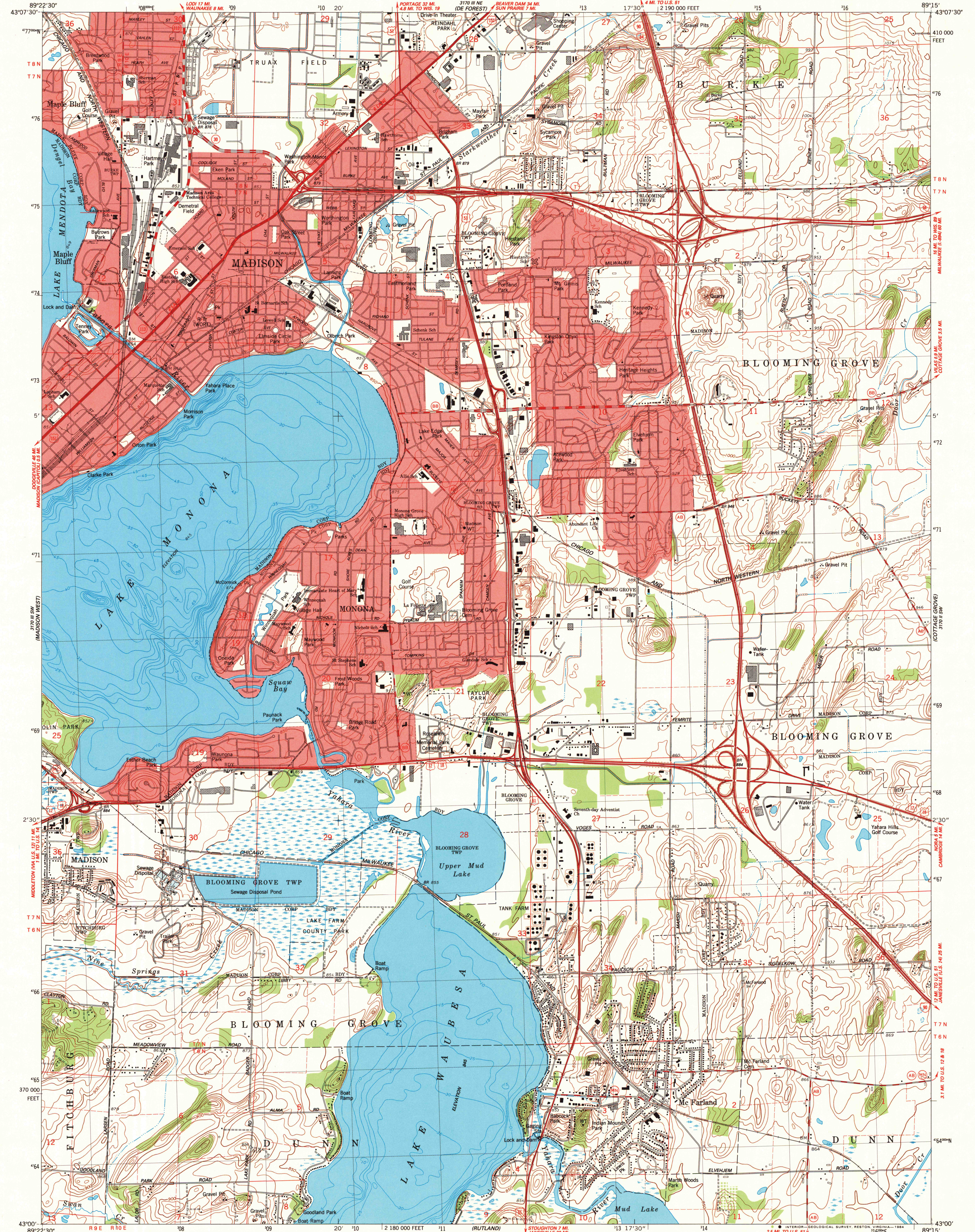
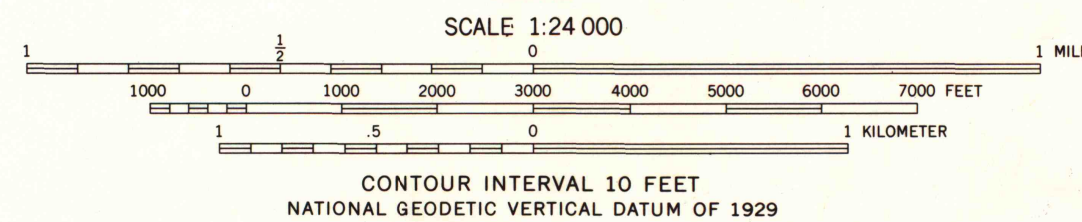
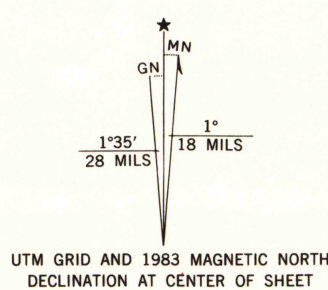


UNITED STATES
DEPARTMENT OF THE INTERIOR
GEOLOGICAL SURVEY

MADISON EAST QUADRANGLE
WISCONSIN-DANE CO.
7.5 MINUTE SERIES (TOPOGRAPHIC)
SE/4 MADISON 15' QUADRANGLE



Mapped, edited, and published by the Geological Survey
Control by USGS and NOS/NOAA
Topography by photogrammetric methods from aerial photographs
taken 1957. Field checked 1959. Revised from aerial photographs
taken 1978 and 1980. Field checked 1983. Map edited 1983
Polyconic projection. 1927 North American Datum
10,000-foot grid based on Wisconsin coordinate system, south zone
1000-meter Universal Transverse Mercator grid, zone 16
To place on the predicted North American Datum 1983,
move the projection lines 4 meters north and
9 meters east as shown by dashed corner ticks
Hydrography compiled from information furnished by
Wisconsin Department of Natural Resources
Red tint indicates areas in which only landmark buildings are shown
Fine red dashed lines indicate selected fence and field lines where
generally visible on aerial photographs. This information is unchecked



THIS MAP COMPLIES WITH NATIONAL MAP ACCURACY STANDARDS
FOR SALE BY U. S. GEOLOGICAL SURVEY, RESTON, VIRGINIA 22092
AND WISCONSIN GEOLOGICAL AND NATURAL HISTORY SURVEY, MADISON, WISCONSIN 53706
A FOLDER DESCRIBING TOPOGRAPHIC MAPS AND SYMBOLS IS AVAILABLE ON REQUEST



ROAD CLASSIFICATION
Primary highway, hard surface
Secondary highway, hard surface
Interstate Route
U. S. Route
State Route
Light-duty road, hard or improved surface
Unimproved road

A.H. ROBINSON
MAP LIBRARY
FEB 07 1985

MADISON EAST, WIS.
SE/4 MADISON 15' QUADRANGLE
43089-A3-TF-024

1983
DMA 3170 III SE-SERIES V861

NON-CIRCULATING

1983
COPY
1-2