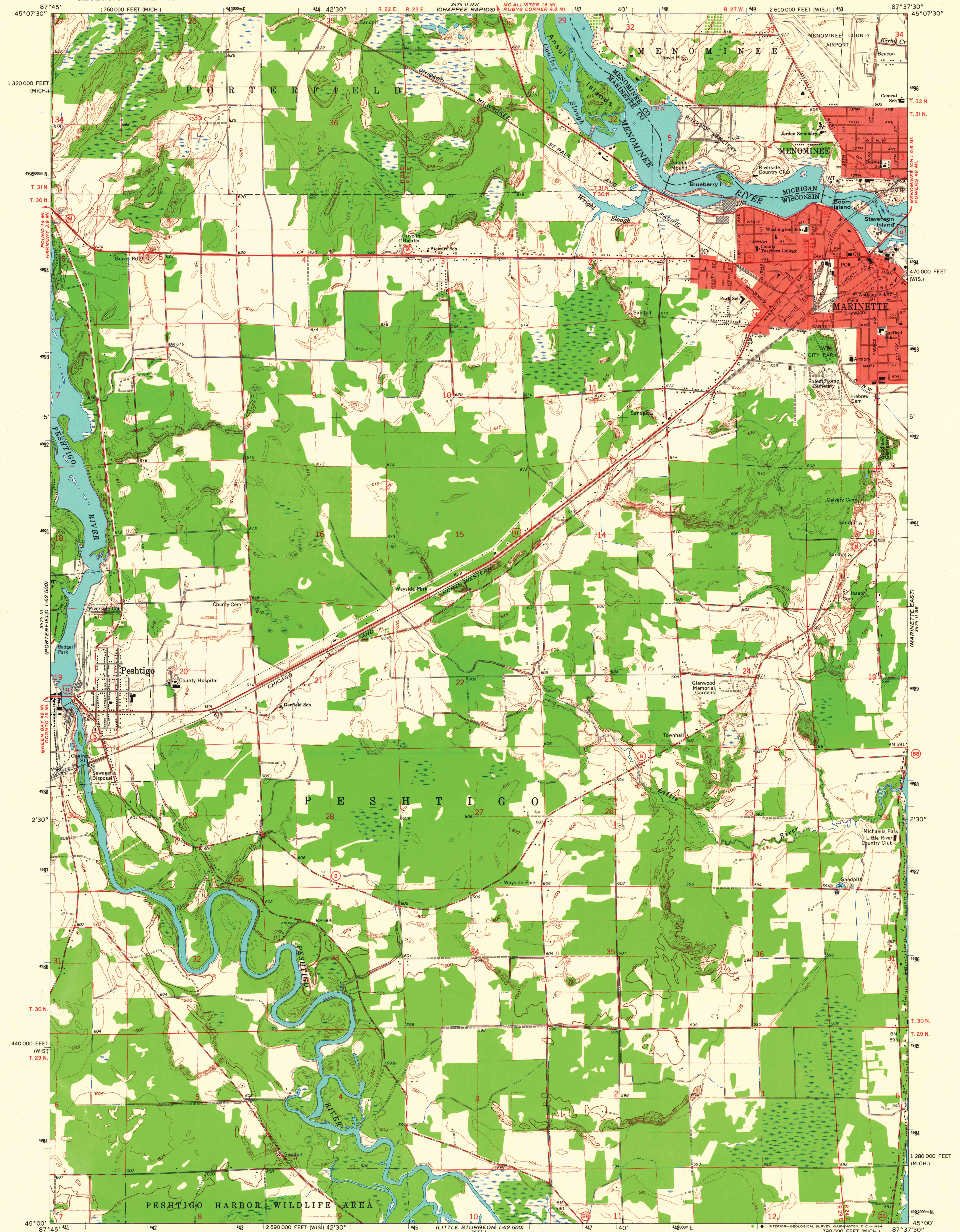
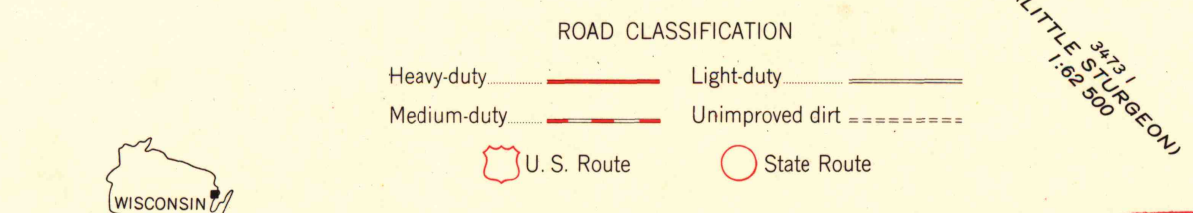
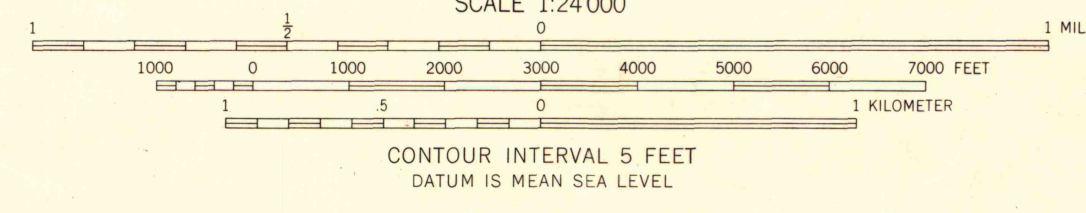
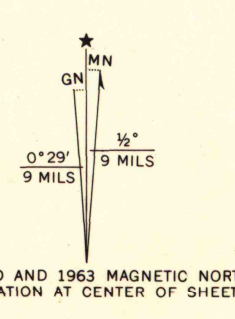


UNITED STATES
DEPARTMENT OF THE INTERIOR
GEOLOGICAL SURVEY

MARINETTE WEST QUADRANGLE
WISCONSIN-MICHIGAN
7.5 MINUTE SERIES (TOPOGRAPHIC)
SW/4 MARINETTE 15' QUADRANGLE



Mapped, edited, and published by the Geological Survey
Control by USGS and USC&GS
Topography by photogrammetric methods from aerial
photographs taken 1954-55. Field checked 1963
Polyconic projection. 1927 North American datum
10,000-foot grids based on Wisconsin coordinate system,
central zone, and Michigan coordinate system, west zone
1000-meter Universal Transverse Mercator grid ticks,
zone 16, shown in blue
Red tint indicates areas in which only landmark buildings are shown
Fine red dashed lines indicate selected fence lines where
generally visible on aerial photographs. This information is unchecked



MARINETTE WEST, WIS.-MICH.
SW/4 MARINETTE 15' QUADRANGLE
N4500-W8737.5/7.5

THIS MAP COMPLIES WITH NATIONAL MAP ACCURACY STANDARDS
FOR SALE BY U.S. GEOLOGICAL SURVEY, WASHINGTON 25, D. C.
AND BY THE WISCONSIN GEOLOGICAL AND NATURAL HISTORY SURVEY, MADISON 6, WISCONSIN
A FOLDER DESCRIBING TOPOGRAPHIC MAPS AND SYMBOLS IS AVAILABLE ON REQUEST

MAP AND AIR PHOTO LIBRARY
University of Wisconsin

1963
AMS 3474 II SW-SERIES V861
LIBRARY USE ONLY

1963
Copy
1-1