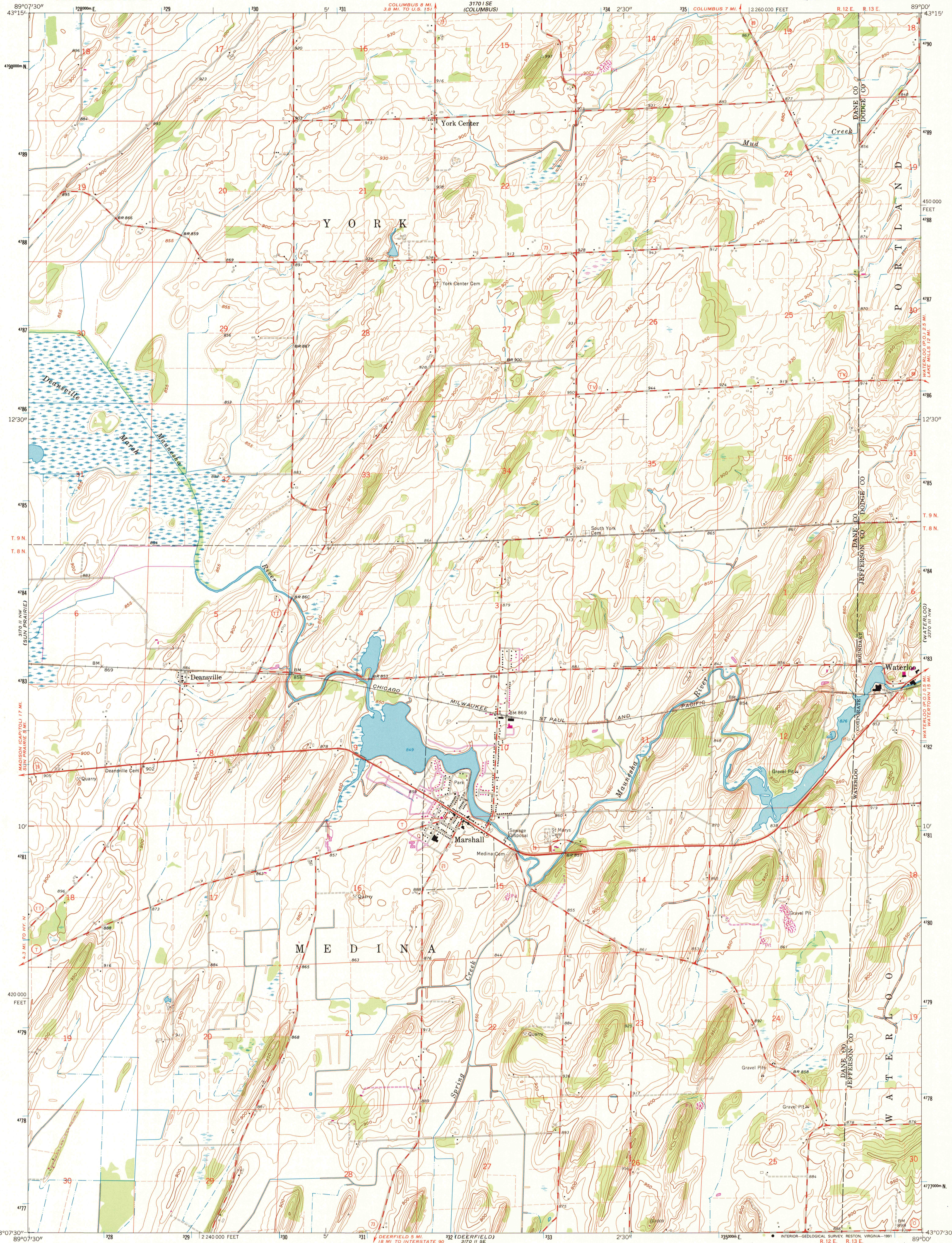


UNITED STATES
DEPARTMENT OF THE INTERIOR
GEOLOGICAL SURVEY

MARSHALL QUADRANGLE
WISCONSIN
7.5 MINUTE SERIES (TOPOGRAPHIC)
NE/4 SUN PRAIRIE 15' QUADRANGLE



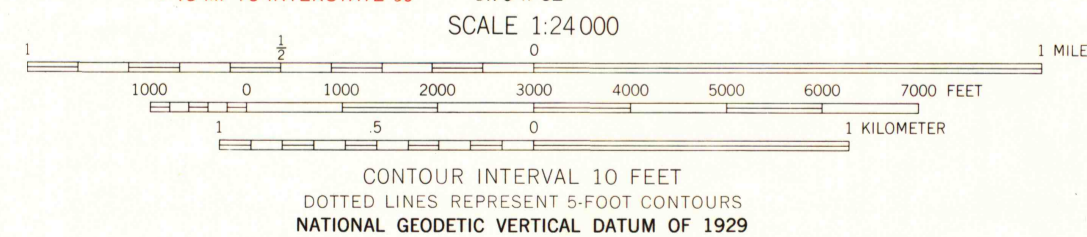
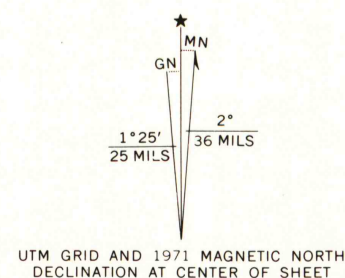
Mapped, edited, and published by the Geological Survey in cooperation with State of Wisconsin agencies

Control by USGS and USC&GS
Topography by photogrammetric methods from aerial photographs taken 1960. Field checked 1962

Polyconic projection. 1927 North American datum 10,000-foot grid based on Wisconsin coordinate system, south zone 1000-meter Universal Transverse Mercator grid ticks, zone 16, shown in blue

Map photos inspected 1981
No major culture or drainage changes observed

Revisions shown in purple compiled from aerial photographs taken 1971. This information not field checked



THIS MAP COMPLIES WITH NATIONAL MAP ACCURACY STANDARDS
FOR SALE BY U.S. GEOLOGICAL SURVEY, DENVER, COLORADO 80225, OR RESTON, VIRGINIA 22092
AND WISCONSIN GEOLOGICAL AND NATURAL HISTORY SURVEY, MADISON, WISCONSIN 53706
A FOLDER DESCRIBING TOPOGRAPHIC MAPS AND SYMBOLS IS AVAILABLE ON REQUEST

U.S. Regional Depository Copy
DO NOT DISCARD

QUADRANGLE LOCATION

The difference between 1927 North American Datum and North American Datum of 1983 (NAD 83) for 7.5-minute intersections is given in USGS Bulletin 1875. The NAD 83 is shown by dashed corner ticks

ROAD CLASSIFICATION

Heavy-duty ——— Light-duty ———
Medium-duty ——— Unimproved dirt ———
○ State Route

MARSHALL, WIS.
NE/4 SUN PRAIRIE 15' QUADRANGLE
43089-B1-TF-024
PHOTOINSPECTED 1981
1962
PHOTOREVISED 1971
DMA 3170 II NE-SERIES V861

A.H. ROBINSON
MAP LIBRARY
JAN 22 1992
University of Wisconsin
Madison

1981
COPY
1-1