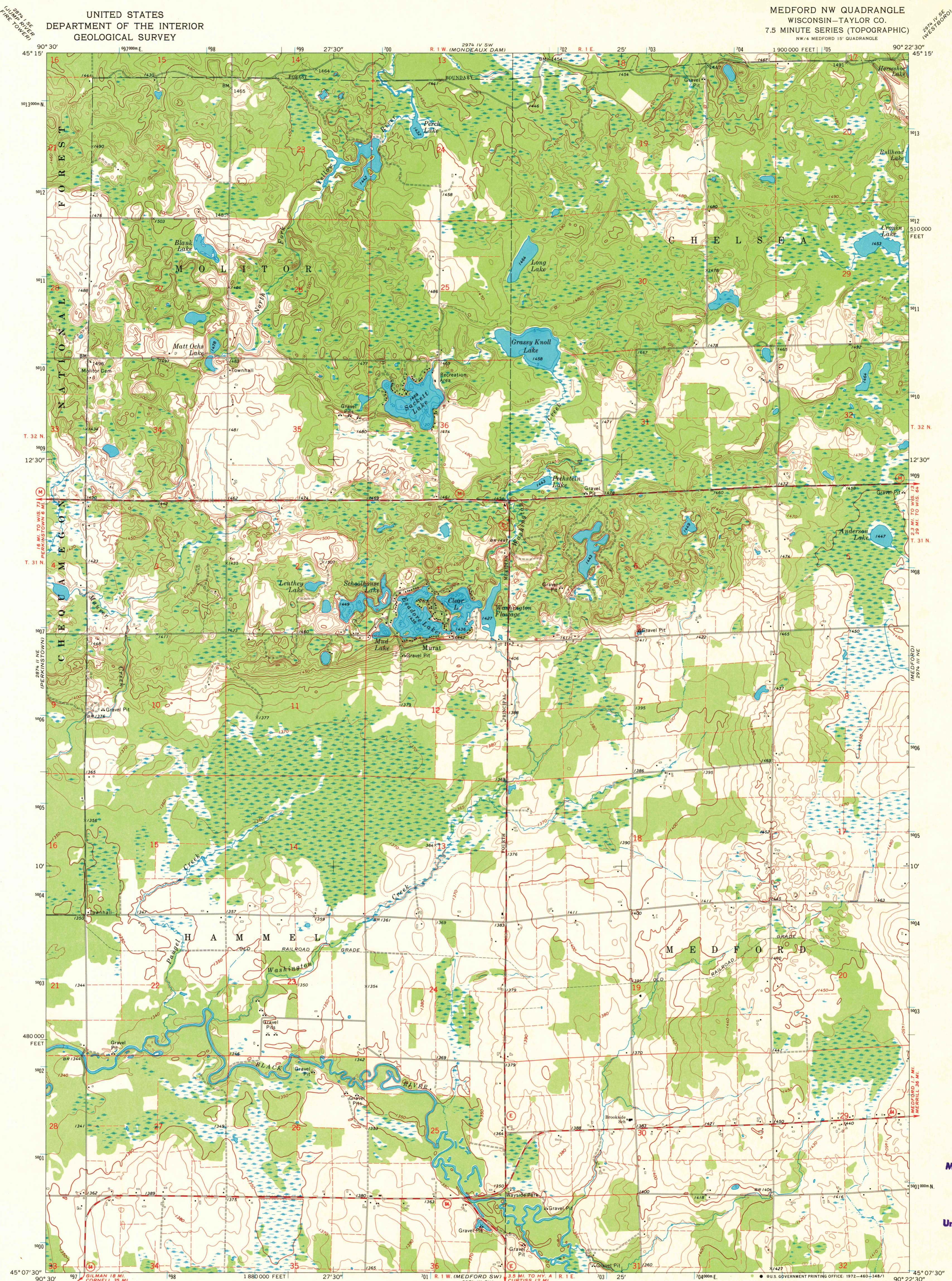


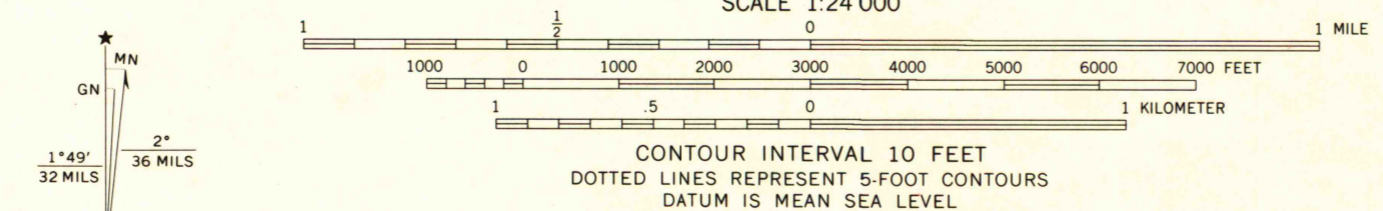
UNITED STATES  
DEPARTMENT OF THE INTERIOR  
GEOLOGICAL SURVEY

MEDFORD NW QUADRANGLE  
WISCONSIN—TAYLOR CO.  
7.5 MINUTE SERIES (TOPOGRAPHIC)  
NW 1/4 MEDFORD 15' QUADRANGLE



Mapped, edited, and published by the Geological Survey

Control by USGS and USC&GS  
Topography by photogrammetric methods from aerial photographs taken 1965. Field checked 1969-70  
Depth curves compiled from charts furnished by Wisconsin Department of Natural Resources  
Polyconic projection. 1927 North American datum  
10,000-foot grid based on Wisconsin coordinate system, central zone  
1000-meter Universal Transverse Mercator grid ticks, zone 15, shown in blue  
Fine red dashed lines indicate selected fence and field lines where generally visible on aerial photographs. This information is unchecked



ROAD CLASSIFICATION  
Secondary highway, all weather, Light-duty road, all weather, hard surface  
Unimproved road, fair or dry weather  
State Route



THIS MAP COMPLIES WITH NATIONAL MAP ACCURACY STANDARDS  
FOR SALE BY U.S. GEOLOGICAL SURVEY, WASHINGTON, D. C. 20242  
AND BY THE WISCONSIN GEOLOGICAL AND NATURAL HISTORY SURVEY, MADISON, WISCONSIN 53706  
A FOLDER DESCRIBING TOPOGRAPHIC MAPS AND SYMBOLS IS AVAILABLE ON REQUEST

MEDFORD NW, WIS.  
NW 1/4 MEDFORD 15' QUADRANGLE  
N4507.5—W9022.5/7.5

1970  
AMS 2974 III NW—SERIES V861

MAP AND AIR PHOTO LIBRARY  
APR 2 1973  
University of Wisconsin

1970 Copy 1-1