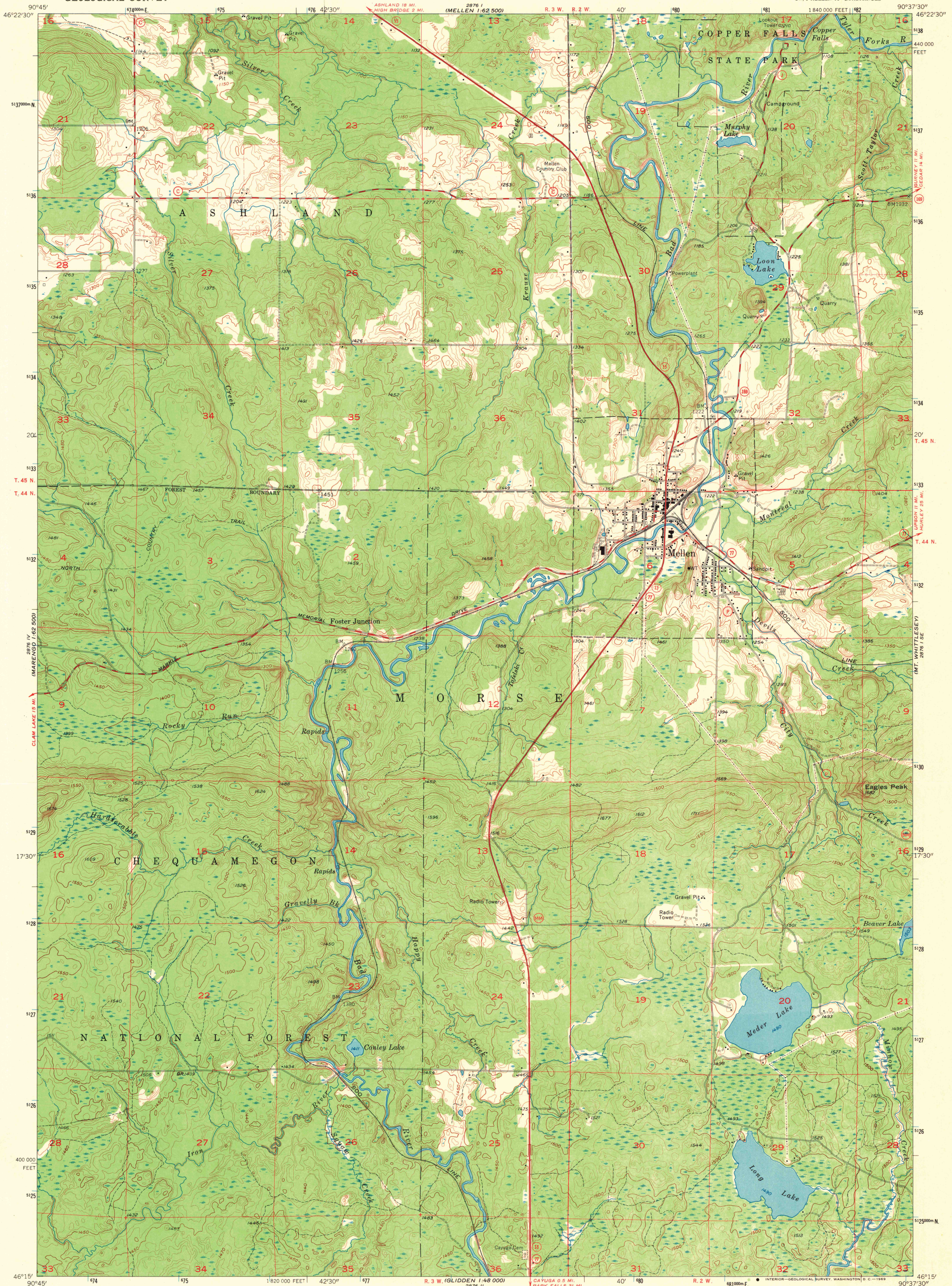
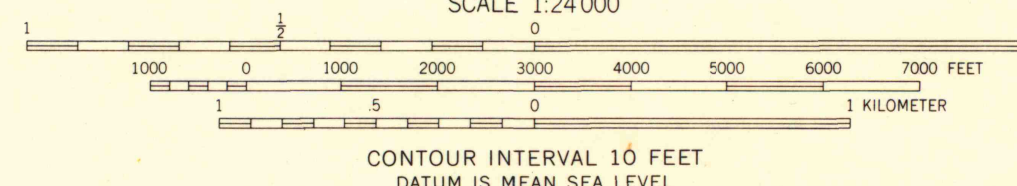


UNITED STATES
DEPARTMENT OF THE INTERIOR
GEOLOGICAL SURVEY

MELLEN QUADRANGLE
WISCONSIN—ASHLAND CO.
7.5 MINUTE SERIES (TOPOGRAPHIC)
SW/4 MELLEN 15' QUADRANGLE



Maped, edited, and published by the Geological Survey in cooperation with the Wisconsin Highway Commission and Wisconsin Geological and Natural History Survey Control by USGS and USC&GS
Topography by photogrammetric methods from aerial photographs taken 1954. Field checked 1956. Revised 1967
Polyconic projection. 1927 North American datum
10,000-foot grid based on Wisconsin coordinate system, north zone
1000-meter Universal Transverse Mercator grid ticks, zone 15, shown in blue
Fine red dashed lines indicate selected fence and field lines where generally visible on aerial photographs. This information is unchecked



ROAD CLASSIFICATION
Heavy-duty ——— Light-duty ———
Medium-duty ——— Unimproved dirt ———
State Route —○—



THIS MAP COMPLIES WITH NATIONAL MAP ACCURACY STANDARDS
FOR SALE BY U.S. GEOLOGICAL SURVEY, WASHINGTON, D.C. 20242
AND BY THE WISCONSIN GEOLOGICAL AND NATURAL HISTORY SURVEY, MADISON, WISCONSIN 53706
A FOLDER DESCRIBING TOPOGRAPHIC MAPS AND SYMBOLS IS AVAILABLE ON REQUEST

MELLEN, WIS.
SW/4 MELLEN 15' QUADRANGLE
N4615—W9037.5/7.5
1967
AMS 2876 1 SW—SERIES V861

MAP AND AIR PHOTO LIBRARY
NOV 18 1969
University of Wisconsin

1967
Copy
1-1