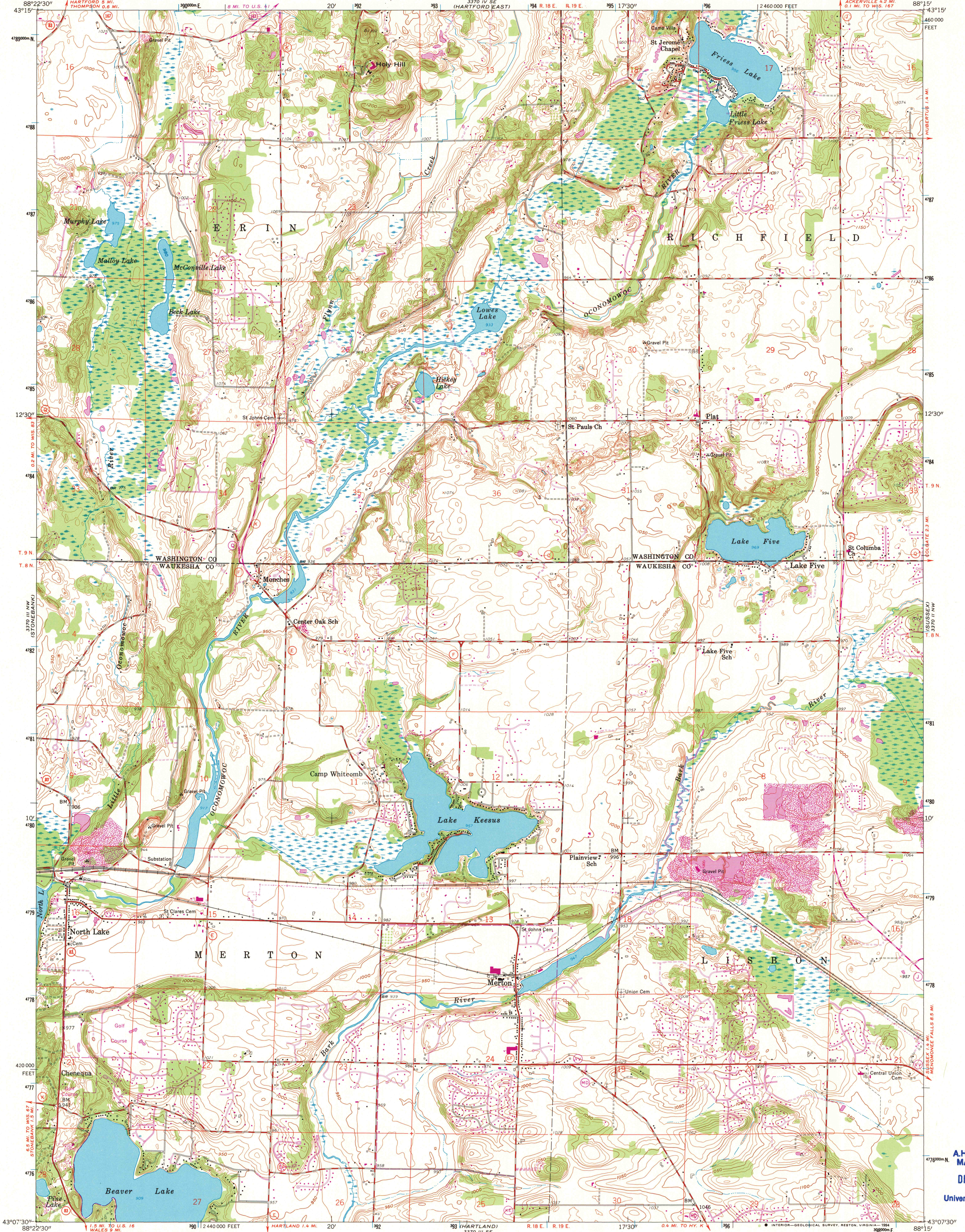


UNITED STATES  
DEPARTMENT OF THE INTERIOR  
GEOLOGICAL SURVEY

MERTON QUADRANGLE  
WISCONSIN  
7.5 MINUTE SERIES (TOPOGRAPHIC)  
NE 1/4 HARTLAND 15' QUADRANGLE  
ACKERVILLE 4.2 MI.  
0.1 MI. TO WIS. 167



Produced by the United States Geological Survey  
Control by USGS and NOS/NOAA  
Topography by photogrammetric methods from aerial photographs  
taken 1954-55. Field checked 1959.  
Projection and 10,000-foot grid ticks: Wisconsin coordinate  
system, south zone (Lambert conformal conic)  
1000-meter Universal Transverse Mercator grid ticks, zone 16, shown in blue  
1927 North American Datum (NAD 27)  
North American Datum of 1983 (NAD 83) is shown by dashed corner ticks  
The values of the shift between NAD 27 and NAD 83 for 7.5 minute  
intersections are given in USGS Bulletin 1875

SCALE 1:24 000  
1 000 0 1000 2000 3000 4000 5000 6000 7000 FEET  
1 KILOMETER  
CONTOUR INTERVAL 10 FEET  
NATIONAL GEODETIC VERTICAL DATUM OF 1929

ROAD CLASSIFICATION  
Primary highway, hard surface  
Secondary highway, hard surface  
Unimproved road  
Interstate Route  
U. S. Route  
State Route

Revisions shown in purple compiled in cooperation with  
State of Wisconsin agencies from aerial photographs  
taken 1992 and other sources. This information not  
field checked. Map edited 1994  
Information shown in purple may not meet USGS content  
standards and may conflict with previously mapped contours

U.S. Regional  
Depository Copy  
DO NOT DISCARD  
MERTON, WIS.  
NE 1/4 HARTLAND 15' QUADRANGLE  
43088-B3-TF-024  
1959  
REVISED 1994  
DMA 3370 III NE - SERIES V861

A.H. ROBINSON  
MAP LIBRARY  
DEC 19 1994  
University of Wisconsin  
Madison

1994  
copy  
1-1